

“

”

“

”

,

,

,

.

,

”

(

),

.

,

,

..... -

.....2007 .,

.

.

“

”

,

,

,

.

,

,

-

,

.

” ; () 3 : () “ ; ()
 - , /

<p>’ :</p>	
<p>⇒ :</p>	<p>” “ ” 103 . (+359 2) 9266290, 9.00 – 17.30</p>
<p>⇒ :</p>	<p>” “ ” 14 . (+359 2) 8166 492, 9.00 – 17.30</p> <p>” “ ” 24 . (+359 52) 603828, 9.00 – 17.00</p>

“
 - ” !
 “ / . 19 ./, (III, . 3) !

- :
 , , “ ” - “ ”
 - “ - ”
 - “ ”

	5
I.1.	5
I.2.	6
I.3.	7
I.4.	7
II.	9
II.1.	9
II.2.	19
	31
I .1.	31
I .2.	33
I .3.	34
I .4.	41
I .5.	46
V.	47
V.1.	47
V.2.	48
V.3.	50
V.4.	50
V.5.	50
V.	51
V.1.	51
V.2.	60
V.3.	60
V.4.	61
V.5.	62
VI.	63
()	63
VI.1.	63
V .2.	64
VI.3.	65
VII.	84

V I.1.	84	
V .2.		85	
VII.3.	,	86	
V .4.		86	
VII.5.	,	86	
VII.6.		86	
V	88	
V .1.		88	
V .2.		89	
V .3.	,	91	
V .4.	,	10	91
VIII.5.		91	
V .6.	,	92	
V .7.		93	
		94	

“ ” ’
 . ‘ ’
 .

I.1.

2001 .

28

I.2.

1	<u>Deutsche Bank AG</u>	Germany, Frankfurt am Main, Taunusanlage 12	EUR
2	<u>American Express Bank Ltd</u>	Germany, Frankfurt am Main, Theodor-Heuss-Allee 112	EUR
3	<u>DZ Bank AG</u>	Germany, Frankfurt am Main, Am Platz der Republik	EUR
4	<u>Raiffeisen Zentralbank Oesterreich AG</u>	Austria, Vienna, Am Stadtpark 9	EUR
5	<u>Intesa Sanpaolo SpA</u>	Italy, Milan, Piazza Paolo Ferrari 10	EUR
6	<u>UniCredito Italiano</u>	Italy, Milan, Piazza Cordusio	EUR
7	<u>Societe Generale</u>	France, Paris, Tour Societe Generale, 17 Cours Valmy	EUR
8	<u>Rabobank Nederland</u>	Netherlands, Utrecht, Croeselaan 18	EUR
9	<u>American Express Bank Ltd</u>	USA, New York, 23rd Floor, 3WFC, 200 Vesey Str.	USD
10	<u>Deutsche Bank Trust Company Americas</u>	USA, New York, 60, Wall Street	USD
11	<u>HSBC Bank USA</u>	USA, New York, One HSBC Center, Buffalo	USD
12	<u>The Bank of New York Mellon Corporation</u>	USA, New York, One Wall Street	USD
13	<u>Barclays Bank Plc</u>	UK, London, POBox 544, 1st Floor, 54 Lombard Street	GBP
14	<u>TD Securities</u>	Canada, Toronto, 77 King Street West, 19th Floor	CAD
15	<u>Danske Bank</u>	Denmark, Copenhagen, Holmens Kanal 2-12	DKK
16	<u>SEB Skandinaviska Enskilda Banken</u>	Sweden, Stockholm, Kungsträdgårdsgatan 8	SEK
17	<u>DnB NOR Bank ASA</u>	Norway, Oslo, Stranden 21 A 3	NOK
18	<u>Sumitomo Mitsui Banking Corporation</u>	Japan, Tokyo, 1-2 Yuraku-cho, 1-chome, Chiyoda-ku	JPY
19	<u>Credit Suisse</u>	Switzerland, Zurich, Bleicherweg 10, P.O.Box 100	CHF
20	<u>Marfin Popular Bank Company Ltd (LAIKI)</u>	Cyprus, Nicosia, Laiki Bank Building, 154 Limassol Avenue	CYP

200.

-05-

14 “ ” 24.

I.3.

“ ”
: , “ ” 55.
:
• “ 33 - (). “

81, . 3
, (. 81, . 5, 1)
(2) .

I.4. ,

, :
• “
• “
• “
• “
• “
• “
• “
• “
• “
• “
• “

(1)

(2)

. 81, . 5, 1 . 81, . 3
()

l. “ ” :

- — —
- —
- —
- —
- —
- — —
-

I. “ ”

- — “
- ” —
- ” —
- “ ”

II.

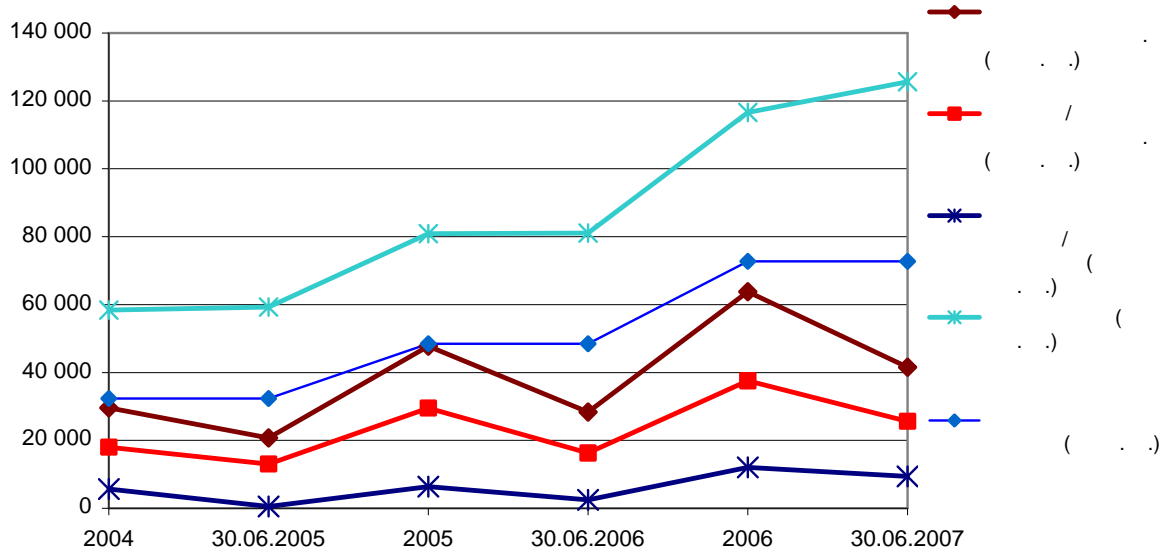
“ ” , (" ") 1991 (),
 ()
 ,
 ,
 ,
 ,
 ,
 ,
 2005
 ,
 .
 2007
 “ —
 ”
 .
 .
 30 2007
 49 191

II.1.

(). 2005 2006 2004
 ()
 .
 .
 “ ”
 , :
 / . /

	2004	30.06.2005	2005	30.06.2006	2006	30.06.2007
/ . / ¹	29 556	20 722	47 779	28 358	63 822	41 528
/ . / ¹	17 966	13 029	29 544	16 284	37 598	25 613
/ . /	5 643	555	6 387	2 507	12 013	9 418
(/) / . ²	0.34	0.02	0.20	0.05	0.23	0.13
/ . /	555 827	680 463	809 023	928 046	1 131 987	1 218 616
/ . /	58 412	59 302	80 928	81 104	116 640	125 673
/ . /	32 338	32 338	48 507	48 507	72 761	72 761
	32 338 128	32 338 128	48 507 186	48 507 186	72 760 779	72 760 779
³						
/ . /						

/ . /

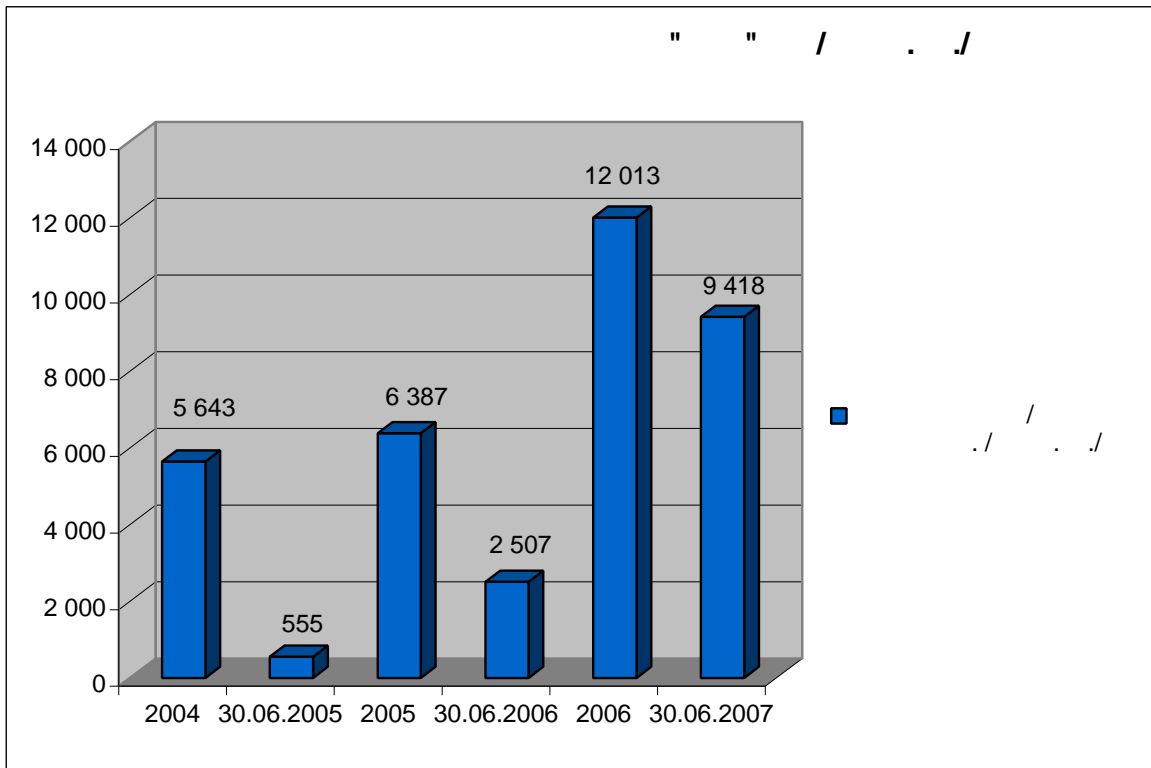


1

2

3

2004, 2005 2006,

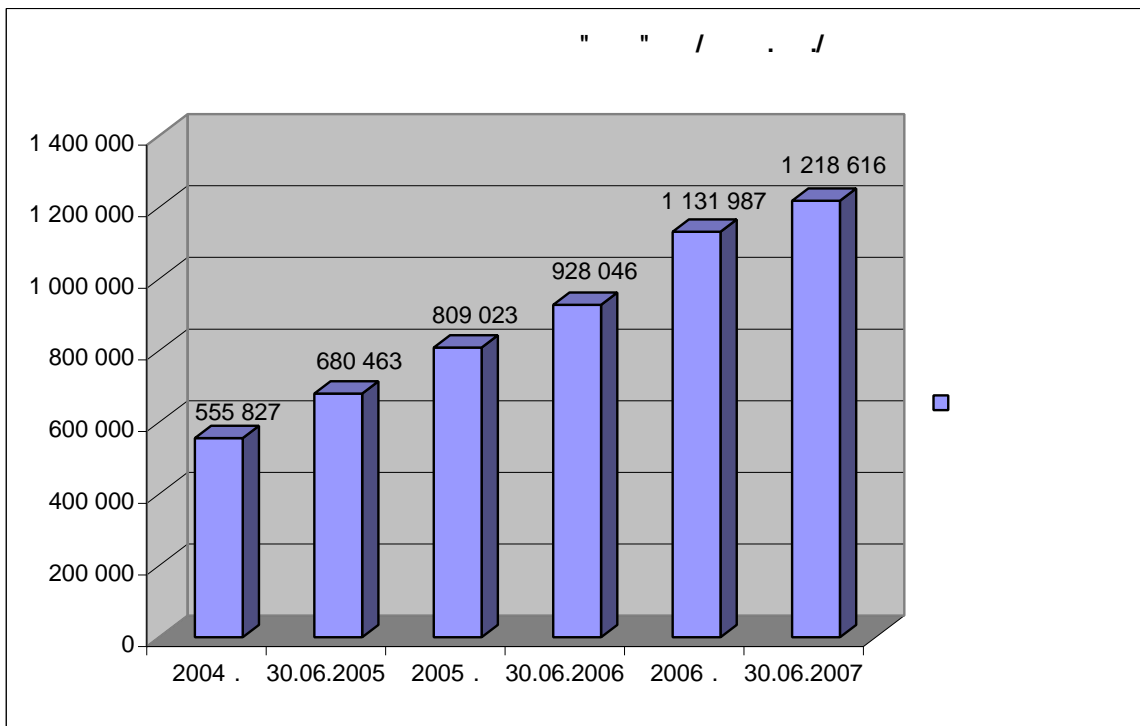


.1.1.

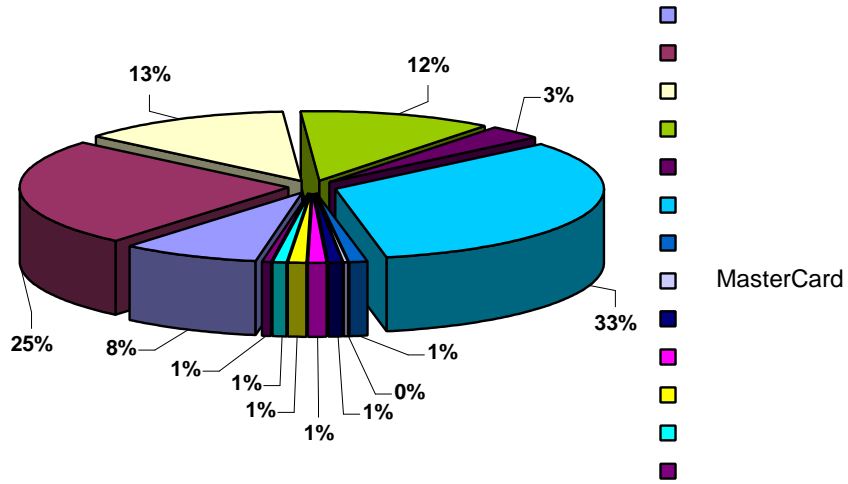
	2004	30.06.2005	2005	30.06.2006	2006	30.06.2007
	62 118	86 395	105 565	116 737	122 619	157 684
	159 802	125 262	109 189	96 416	197 455	183 919
	13 345	18 013	1 036	7 207	6 741	11 991
	5 953	7 207	13 936	21 355	25 096	33 101
	253 107	331 603	383 872	450 427	542 331	581 579
	11 149	18 928	5 236	35 084	7 014	12 097
	27 170	42 372	113 209	123 588	132 237	118 563
	0	24 085	38 382	36 290	51 541	69 178
	23 183	26 598	38 598	40 942	46 953	50 504
	555 827	680 463	809 023	928 046	1 131 987	1 218 616

31 2006 . " " 1,131,987 .
 809,023 . 2005 ., 39.92%.
 28.44%. 2006 .
 322 964 . ,
 39.9%. 2006 .
 44.1%, ,

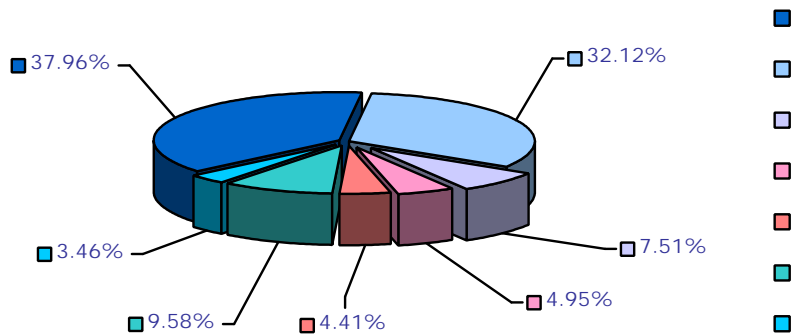
30.06.2007 31.31%, 27.3% 30.06.2006 -
 1 218 616 . . .
 2006 -
 , , 50%.
 2006 .
 122,619 . . (10.83%) 105,565 . .
 2005 . " " 2006 .
 197,455 . . 17.44% .
 80.84%.
 " " 25,096 . . 13,936 . .



30.06.2007 . " " 1 218,616 . .
 2007 . 31.31%
 30.06.2006 ., 290,570 . .



31.12.2006 542,331
 - - 47.91%.
 41.28%.,
 ,
 ,
 ,



“ ”

37.96%

31.12.2006 .

32.12%.

/ . . /

	2004	30.06.2005	2005	30.06.2006	2006	30.06.2007
	45 802	10 101	16 809	94	89	88
	418 982	550 056	661 189	764 261	946 657	1 059 380
*	464 784	560 157	677 998	764 355	946 746	1 059 468
	9 568	10 181	14 507	993	0	0
	10 284	9 603	9 152	8 092	9 658	9 046
	12 779	19 648	4 981	19 826	4 965	24 429
	0	21 572	21 457	53 676	53 978	0
	497 415	621 161	728 095	846 942	1 015 347	1 092 943
	32 338	32 338	48 507	48 507	72 761	72 761
	20 431	26 409	26 034	30 090	31 866	43 494
	5 643	555	6 387	2 507	12 013	9 418
	58 412	59 302	80 928	81 104	116 640	125 673
	555 827	680 463	809 023	928 046	1 131 987	1 218 616
	52 866	49 173	46 389	38 852	88 551	98 453

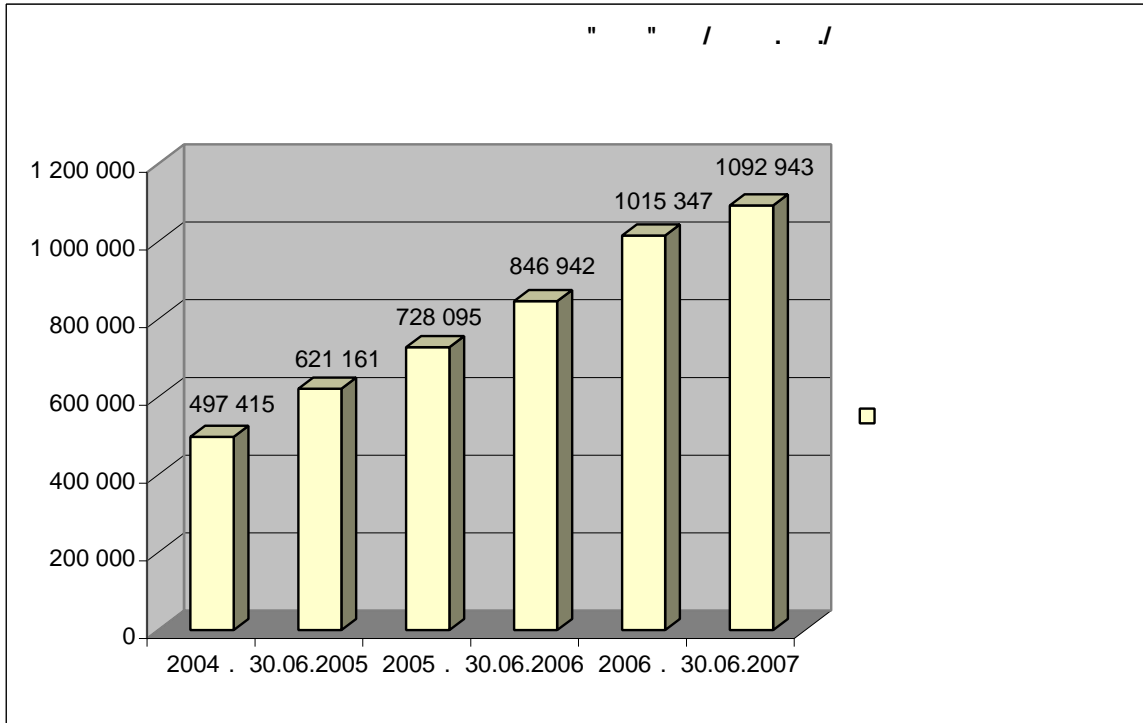
*

39.64% 2005 . 31.12.2006 . 946,746 . . .
677,998 . . .
2006 . 0.01%

“ ”

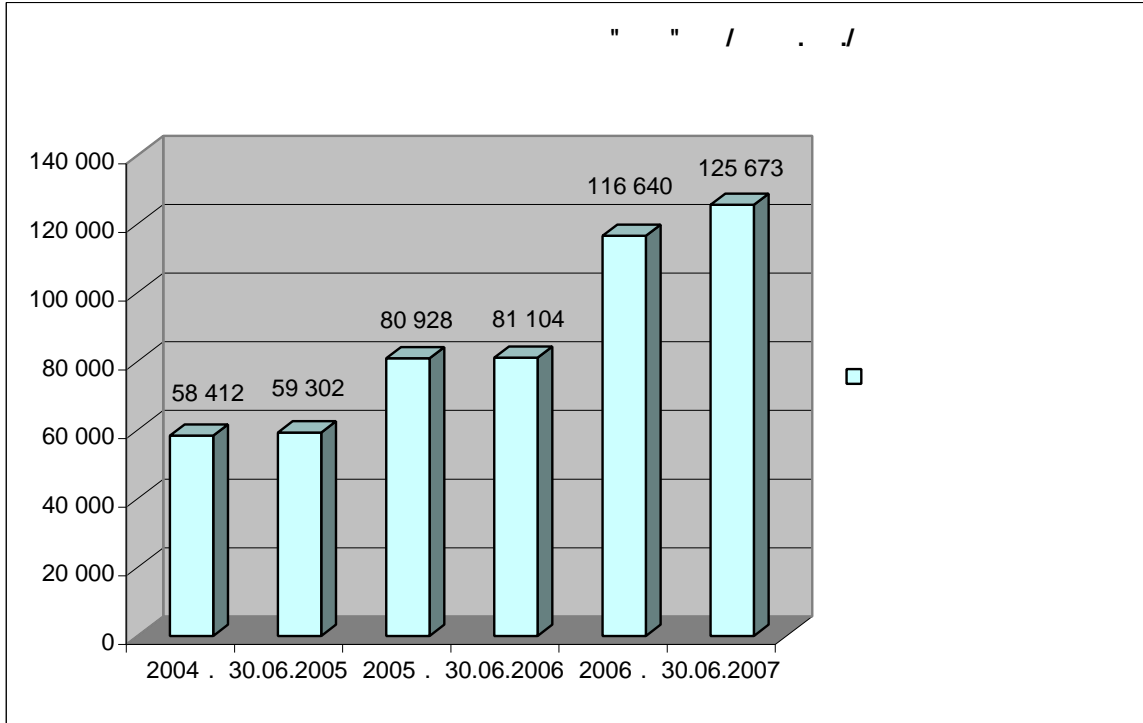
90.81% 2005 . 661,189 . 2005 . 946,657 . . .
2006 . 43.17%. 93.23%

2006 ., 49.05%, 48.90%



(. . "retail bank").

2006 . 44.13% 2005 . 116,640 . .,
 50%
 72 760 779 . 2006 . - 88.09%.
 2006 . 12 013 . ., 2005 . 6 387
 . . 32 403
 . . 2006 ., 24.55%

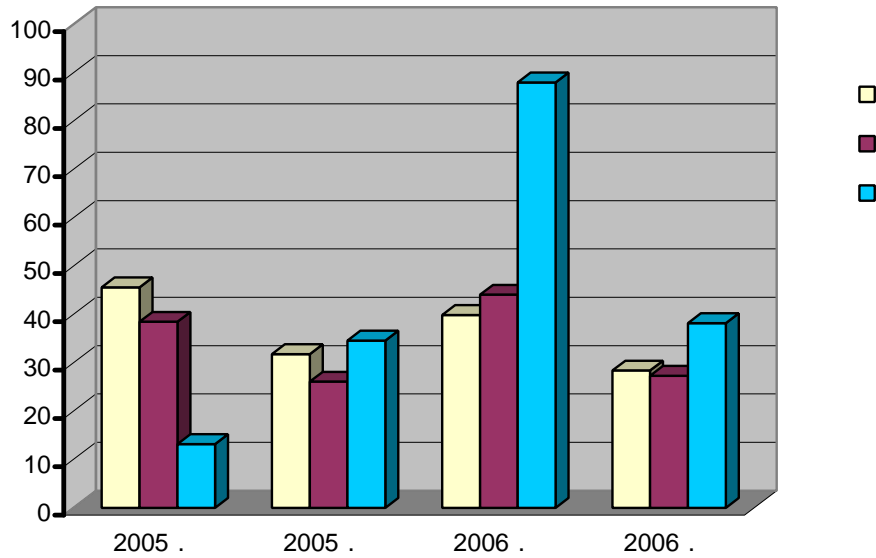


30.06.2007 . " " 125,673
 54.95% 30.06.2006 ,, 44,569 . .

	2004 .	2005 .	2006 .	2004 .	2005 .	2006 .
	555827	809023	1131987	24917359	32850884	42194864
	58412	80928	116640	2732244	3446356	4388784
	5643	6387	12013	434112	584235	807590

/ %/	2005 .	2006 .	2005 .	2006 .
	45,6	39,9	31,8	28,4
	38,5	44,1	26,1	27,3
	13,2	88	34,6	38,2

" " , (%)



.1.2.

	31.12.2004	30.06.2005	31.12.2005	30.06.2006	31.12.2006	30.06.2007
	29 556	20 722	47 779	28 358	63 822	41 528
	-11 590	-7 693	-18 235	-12 074	-26 224	-15 915
,	17 966	13 029	29 544	16 284	37 598	25 613
,	12 452	8 437	15 958	9 830	19 682	12 670
,	2 465	580	1 442	876	10 219	6 201
,	1 034	582	1 955	723	1 755	1 253
,	2 372	147	4 586	545	2 817	315
	-29 566	-18 479	-38 284	-22 750	-49 251	-31 220
/() ()	156	-3 643	-7 867	-2 559	-10 045	-4 368
	6 879	653	7 334	2 949	12 775	10 464
	-1236	-98	-947	-442	-762	-1 046
	5 643	555	6 387	2 507	12 013	9 418

2006 .

12,013 . . ,
2005 . , 6,387 . .

2006 “ ” 37,598
52.17% 27.26% -
2005 29,544
2005 . 18,235 26,224
43.81%.
“ ” 34,473 2006
23,941 2005 -
2006 - 19,682
27.31% 15,958 2005
2006 10,219
1,442 2005
“ ” 2006 49 251
2005 28.65%.
68.34%, / 2005 71.58%.

.1.3.

	2006	2005	2004
%	10.30%	7.89%	9.66%
%	1.06%	0.79%	1.02%
/ %	10.30%	10.00%	10.51%
/ %	4.35%	4.73%	5.32%
/ %	68.34%	71.58%	81.47%
/ %	47.91%	47.45%	45.54%
/ %	83.64%	83.80%	83.62%
/ %	83.63%	81.73%	75.38%
	13.17%	13.92%	15.31%

1.06%. 31.12.2006 10.30%
ROA ROE,
2006
31.12.2006 13.17%,
12% / 30.06.2007
.2. “ ”/
2006

II.2.

II

II.3.1.

“

”

II.3.1.1.

()

BGN/EUR

1997 .,

“ ”

(

.),

()

“ ”

2007 .

M
 03.08.2007 .
 / ,
 2007 - 2009 .
 5% , 5.5%.
 11-12%. /3.5-4%/.
 2007-2009 . 15% ,
 2008 . - 6%
 15.8% 2006 . 21.5% , 2006 .
 1.3% 2005 . 6.1% 2006 .,
 2007 . 0.4% () .
 0.24
 01.01.2007 .
 (16.35%) 3,103.3 . (14.18%) 2005 ., 4,104.5 103.2%
 , 118.4% 2005 . 7.4%,
 2007 . 0.4%
 4 086.1 . 3 546.2
 - 539.9 2007 .
 () 449 841.9 .
 2007 . 0.4 2007 . 0.7
 (50.7%)
 2001 . 2007 . 28% 10%, - 0%.
 38% 24%;
 / ,
 2008 . " " , (2007-
 -)

Poor's (26.10.2006 .) Standard &
„BBB/A-3”. „BBB+/A-2”
„BBB+/A-2”. 23.02.2007 .
Moody's Investors Service
„Baa3/Baa3”

(1 1997 .)

1.95583

2010 .

.3.1.2.

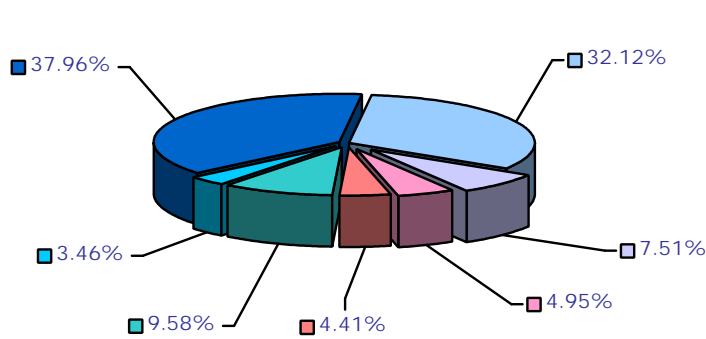
/ / .
7

9

“ ”

	2004	2005	2006	30.06.2007
	92.56%	95.01%	83.12%	91.60%
	6.85%	1.70%	15.38%	4.13%
	0.30%	0.28%	0.14%	0.12%
	0.29%	3.01%	1.36%	4.15%

	2004	2005	2006	30.06.2007
	224 214 337 .	341 966 897 .	455 595 468 .	554 285 495 .
	16 611 270 .	6 122 182 .	84 362 372 .	24 999 377 .
	733 825 .	1 014 634 .	770 498 .	768 464 .
	714 542 .	10 842 702 .	7 487 457 .	25 128 286 .
:	242 273 974 .	359 946 415 .	548 215 795 .	605 181 622 .



(“ ”)

8%, , - 4%. “ ” 1988 .

(12% 2004, 2005 2006 ., - 6%).

() .

	2004 .	2005 .	2006 .
	50 284	71 015	100 255
	50 226	71 010	100 792
	328 536	510 264	761 467
	328 536	471 659	655 124
	-	38 605	106 343
	15,29%	13,92%	13,24%
	15,31%	13,92%	13,17%

	30.06.2007 .
()	111 901
/ /	111 901
	0
/ (%)	12.28%
(%)	12.28%

“overnight”

30.06.2007 .		/		8	1	1	3	3	6	1
		30	7						12	
A	01	02	03	04	05	06	07	08		
1.	351715	106026								
1.1.	157445	0	157445							
1.2.										
7	183447	455	183902							
1.3.										
, , 20% - , 8	10823	61072	60413	10882	600	0	0	0	0	0
1.4.										
.1.3.	0	39446	39446	0	0	0	0	0	0	0
1.5.										
, 20% - , 8;	0	0	0	0	0	0	0	0	0	0
1.6.										
, 1 2 , 3 8	0	5053	5053	0	0	0	0	0	0	0
1.7.										
,	0	0	0	0	0	0	0	0	0	0
2.	663959	35993	73617	44648	44788	42200	84966	409733		
2.1.	0	0	0	0	0	0	0	0	0	0
2.2.	59756	0	59756	0	0	0	0	0	0	0
2.3.	30859	0	0	30859	0	0	0	0	0	0
2.4. ()	573344	35993	13861	13789	44788	42200	84966	409733		
2.4.1.	13835	0	0	0	0	0	0	13835		
2.4.2.	559509	35993	13861	13789	44788	42200	84966	395898		
2.4.2.1.	0	0	0	0	0	0	0	0	0	0
2.4.2.2.	593	0	593	0	0	0	0	0	0	0
2.4.2.3.	13330	0	1338	531	11461	0	0	0	0	0
2.4.2.4.) ()	347136	33818	8251	10160	25319	30638	64437	242149		

2.4.2.5. ()	198450	2175	3679	3098	8008	11562	20529	153749
2.5.								
	0	0	0	0	0	0	0	0
3.) (1157693	142019	519876	55530	45388	42200	84966	409733
3.1. /	106026		106026	0	0	0	0	0
4.	0		0	0	0	0	0	0
5.	0		0					
6.	0		0					
7.	1086692		596872	202341	80703	83891	109650	13235
7.1.	114		89	0	0	0	0	25
7.2.	1086578		596783	202341	80703	83891	109650	13210
7.3. ()	0		0	0	0	0	0	0
7.4.	0		0	0	0	0	0	0
7.5.	0		0	0	0	0	0	0
8.	0		0	0	0	0	0	
9.	0		0	0	0	0	0	0
10.) (1086692		596872	202341	80703	83891	109650	13235
11.	129138		15419	4603	0	0	0	109116
12. ()			-92415	-151414	-35315	-41691	-24684	287382
13. /			-92415	-243829	-279144	-320835	-345519	-58137
14. ()	32,37							
15. ()			87,10	18,84	13,99	11,62	19,74	114,21

31	2006	1	1 3	3 1	1 5	5		
		56,937	-	-	-	-	-	56,937
		65,682	-	-	-	-	-	65,682
		197,455	-	-	-	-	-	197,455
		-	-	-	4,732	522	19,842	25,096
		540	6,201	-	-	-	-	6,741
		12,683	65,105	128,237	256,194	80,112	-	542,331
		7,014	-	-	-	-	-	7,014
		1,018	10,285	2,301	54,920	57,251	6,462	132,237
		2,194	33,205	-	16,142	-	-	51,541
		-	-	-	-	-	46,953	46,953
		343,523	114,796	130,538	331,988	137,885	73,257	1,131,987
		89	-	-	-	-	-	89
		421,048	76,411	168,620	280,578	-	-	946,657
		425	851	2,786	5,596	-	-	9,658
		4,965	-	-	-	-	-	4,965
		-	-	-	-	-	-	-
		-	-	53,978	-	-	-	53,978
		426,527	77,262	225,384	286,174	-	-	1,015,347
		(83,004)	37,534	(94,846)	45814	137,885	73,257	116,640
		(83,004)	(45,470)	(140,316)	(94,502)	43,383	116,640	

/ /

2006,

31	2005	1	1 3	3	1	5		
				1	5			
	47,953	-	-	-	-	-	-	47,953
	57,612	-	-	-	-	-	-	57,612
	104,804	3,912	-	-	-	-	473	109,189
	446	-	-	1,552	9,286	2,652		13,936
	-	1,036	-	-	-	-	-	1,036
	16,347	29,209	130,869	207,148	-	299		383,872
	5,236	-	-	-	-	-	-	5,236
	1,050	-	7,006	55,727	43,238	6,188		113,209
	-	-	-	38,382	-	-		38,382
	-	-	-	-	-	38,598		38,598
	233,448	34,157	137,875	302,809	52,524	48,210		809,023
	16,809	-	-	-	-	-		16,809
	506,261	44,515	103,880	38	-	6,495		661,189
	-	-	-	9,152	-	-		9,152
	2,440	-	2,541	-	-	-		4,981
	6,229	8,278	-	-	-	-		14,507
	-	-	21,457	-	-	-		21,457
	531,739	52,793	127,878	9,190	-	6,495		728,095
	(298,291)	(18,636)	9,997	293,619	52,524	41,715		80,928
	(298,291)	(316,927)	(306,930)	(13,311)	39,213	80,928		

2006

:

1

(Moody's, S&P, Fitch IBCA),

”

II.3.2.

()

„

“ ”

- :
1. -
 2. -
 -
 -
 -
 3. -
 4. " " -

I .1.

I .1.1.

: “ ” ()

: . 1000, ” ” 103

: (00359-2) 9266500

: 24067

SWIFT : CECBBGSF

www.ccbank.bg, E-mail: office@ccbank.bg

I .1.2.

28.03.1991 . “ 56 ” ()
 15.10.1992 . ;
 5227/1991 . , 831447150 , 334, 4, . 11 . .
 1223002192;
 28.03.1991 . ;

.1.3.

334, 1, 4, .11. 5227/1991
 831447150.
 : 1223002192

I .1.4.

E “ ” (),
 ,
 09.12.1992 .

.1.5

“ ” ()
 15.10.1992 . ;
 2004 . 16 169 564 32 338 128
 ;
 2005 . 32 338 128 48 507 186
 ;
 2006 . 48 507 186 72 760 779
 ;
 08.04.2005 . . . 185/1997 .
 “ ” ();
 26.04.2005 . - . . 187/1996 . “ ” ()
);
 02.07.2007 . . . 772/2005 .
 “ ”
 ” () “ ”
 3/ / ,
 ,
 ;

.1.6.

,

.

I .2.

.2.1.

2004 .

1 035 . . , - “

” 248 . . , “ ” 100 . .

“ 639 2004

2 204 “ 2 355 - “ ”

91 31.12.2004

2 446 -

31.12.2004 : “ ”

- 4.50 % , “ ” - 4.07 % , “ ” - 9.95 % ,

“ ” - 9.05 % , “ ” - 9.98 % .

2005 .

10 432 - “ ”

4 757 “ ”

2 263 “ ” 1 840

“ ” 303 “ ” 198

2005 .

4 094 -

“ ” 2 531

“ ” 657 “ ” 303

. 31.12.2005

8 784 -

31.12.2005 :

” - 9.95 % , “ ” - 5.18 % , “ ” - 4.50 % ,

“ ” - 7.10 % , “ ” - 9.98 % , “ ” -

5.31 % , “ ” - 5 % , “ ”

- 5 % . 2006 .

26 922 -

“ ” 8 848 “ ” 2

970 “ ” 2 102 “ ”

“ ” 1 756 “ ”

3 532 “ ” 4

573 2006 .

6 898 2006 .

16 436 - “ ”

” 3 982 “ ” 2 311

. “ ” 786 “ ”

1 347 “ ” 6 414

. 31.12.2006

26 168

-

31.12.2006

: “ ” - 9.95 % , “ ” - 5.18 % , “

” - 4.50 % , “ ” - 7.10 % , “ ” - 9.98 % , “

” - 4.16 % .

2006 .

26 922 - “ ”

8 848 . . . , “ ” 2 970 . . . ,
 “ ” 1 756 . . . , “ ” 2 102 . . . , “ ” 3 532
 2006 . “ ” 4 573 “ ”
 6 898 . . . 2006 . 16 436
 982 . . . , “ ” “ ” 2 311 . . . , “ ” 3
 “ ” 786 . . . , “ ” “ ” 1 347 . . .
 “ ” 6 414 . . . 31.12.2006 .
 26 168 . . . -
 31.12.2006 . :
 “ ” - 9.95% , “ ” - 9.06% , “ ” -
 “ ” - 4.50% , “ ” - 7.10% , “ ” -
 9.98% , “ ” - 4.16% .
 01.01.2007 . 30.06.2007 .
 “ ” 9 614 . . . , -
 “ ” 1 209 . . . 6 309 . . . “ ”
 01.01.2007 . 30.06.2007 .
 9 059 . . . , - “ ” 3 823 . . .
 01.01.2007 . 30.06.2007 .
 “ ” 1 533 . . . , “ ” 5 971 . . . , -
 “ ” 1 155 . . . , “ ” “ ” 645
 01.01.2007 . 30.06.2007 . 645 . . .
 30.06.2007 . “ ” 8 159 . . .
 30.06.2007 . 30 711 . . . -
 30.06.2007 .
 : “ ” - 9.95% , “ ” - 9.06%
 , “ ” - 4.50% , “ ” - 7.10%
 , “ ” - 9.98% , “ ” - 4.16%

.2.2.

01.01.2007 . 30.06.2007 .
 309 . . . 18 673 . . . , - “ ” 6
 “ ” 1 209 . . .

/ .3.

.3.1.

/

/

“ ”
“Central Cooperative Bank” PLC. “ ”
“ — ”
“ “
“ “
“ “
“ “
“ “
“ “
“ “
“ “
International.
“Western Union”.
MasterCard

- :
;
- ;
- ;
:
- ;
- ,
(),
- ,
- ;
“ “ ,
() SWIFT;
- Western Union;
- ;
- - ;
- (CCB Online);
- Maestro MasterCard;
Maestro
- ePay.bg EpayVoice;
- “SMS” ;
- ;
- ;
- - “ — ” ;
- “ ” ;
- -
“ ”

30.06.2007 .

“Central Cooperative Bank” PLC.

“Western Union”.
MasterCard

International

/

• ;

• ;

• ;

• ;

• ;

• “ “ , WEB ;

• ;

• “ “ ;

• (.) Western Union; SWIFT;

• ;

• ;

• Online); (CCB

• MasterCard; Maestro
Visa

• MasterCard ; Maestro

• “SMS” ePay.bg EpayVoice;

• ;

• ;

• ;

• “ “ ” ;

• “ ” ;

• “ ” ;

• “ ” ;

• “ ” ;

.3.2.

“ ” ,

3

;

,

,

,

,

/ . /

	2004	2005	2006	30.06.2007
.	2,070	2,784	4,742	4,859
	150	292	245	146
	667	3,718	7,873	5,573
	1,273	209	337	118
	25,395	40,773	50,601	30,832
	587	13	1,240	0
,	13,350	17,749	22,382	12,670

.3.3.

“ ”

31.03.2007 .()

, “ ”

02.05.2007 .

31.03. 2007 .

/ . /

()	33 813 811	887 516	2.62%
()	16 411 247	411 512	2.51%

	8 952 350	183 096	2.05%
	3 939 210	57 846	1.47%
	5 013 140	125 250	2.50%
	44 517 993	1 270 693	2.85%
	39 124 843	1 140 782	2.92%
	14 434 583	560 216	3.88%
	15 243 895	516 358	3.39%

: " "

: 1.

31.03.2007 .- . 2.
" "

" "

• - 2.92% 31.03.2007 . 2.67% 2006
 . 2.46% 2005 .;
 • -2.85% 31.03.2007 .
 2.68% 2006 . 2.46% 2005 .;
 • - 2.34 31.03.2007 . 2.45%
 2006 1.99% 2005 .

:

(retail banking)

• ;
 • , SMS , E-asy info;
 • ;
 • ePayVoice,
 " " , " " , WEB .
 31.03.2007 . 272 11% 72
 1 . 50
 1138 31.03.2007 ..

• - " " ;
 • - " " ;

I .4.2.

“ ”

.4.3.

“ ”

;

.

.

,

,

,

.

.

,

,

()

,

,

.4

9

.

,

)

(

.

.4

11

()

,

.6,

.5

,

(

).

“

”

1.

,

:

• , ,
 () , .43
 ,
 ,

•
 () .
 ,
 •
 •

“ ”
 “ ”
 “ ”
 “ ”
 “ ”
 “ ”
 “ ”
 “ ”
 “ ”
 “ ”
 “ ”
 “ ”
 “ ”
 “ ”
 “ ”
 “ ”
 “ ”

“ ”

“ ”

“ ”

“ ”

“ ”

“ ”

“ ”

“ ”

“ ”

2006

2007

50

	30.06.2007	31.12.2006	31.12.2005
	49	45	39
	191	175	140

1.		. , . " . . "	103
2.	/ /	. , . " "	8
3.	/ /	. , . " "	13
4.	/ /	. , . " "	4
5.	/ /	. , . " "	58A
6.	/ /	. . , . " . "	4
7.	/ /	. , . " . . "	4
8.	/ /	. , . " "	5
9.	/ /	. , . " "	54
10.	/ /	. , . " "	1
11.	/ /	. , . " " "	2
12.	/ /	. , . "23 "	3
13.	/ /	. , . " "	11
14.	/ /	. , . " "	47

15.	/ /	.	,	.	"	22
16.	/ /	.	,	"	.	" 10
17.	/ /	.	,	"3-	"	59
18.	/ /	.	,	"	"	23
19.	/ /	.	,	"	"	7
20.	/ /	.	,	"	"	4
21.	/ /	.	,	"	"	150
22.	/ /	.	,	"	"	5
23.	- / /	.	,	"	"	44
24.	/ /	.	,	"	"	7
25.	/ /	.	,	"	"	1
26.	/ /	.	,	"	"	33
27.	/ /	.	,	"	"	5
28.	/ /	.	,	"	"	4
29.	/ /	.	,	"	"	1
30.	/ /	.	,	"	"	1
31.	/ /	.	,	"	"	11
32.	- / /	.	,	"	"	442
33.	- / /	.	,	"	"	103
34.	/ /	.	,	"	"	3
35.	/ /	.	,	"	"	2
36.	/ / -	.	,	"	"	23
37.	/ /	.	,	"	"	37
38.	/ /	.	,	"	"	14
39.	/ /	.	,	"	"	7
40.	/ /	.	,	"	"	7
41.	/ /	.	,	"	"	"
42.	/ /	.	,	"	"	51
43.	/ /	.	,	"	"	18
44.	/ /	.	,	"	"	54
45.	- / /	.	,	"	"	58
46.	/ /	.	,	"	"	44
47.	/ /	.	,	"	"	5
48.	/ /	.	,	"	"	1
49.	/ /	.	,	"	"	13
50.	/ /	.	,	"	"	7

2007 .

“ ”

I .5.

.5.1.

2004 .

	16 575		- 3 234	
:	- 10 681	;	- 1 348	;
- 584				
- 728	31.12.2004			
	20 698			4 123
24.87 %.				
- 10 915		2.19 %;	- 4 537	
40.29 %;		- 606		3.76 %;
- 1 549		14.91 %;		
- 3 091		324.5 %.		
31.12.2005				
	35 085			14 387
69.91 %.				
- 15 350		40.63 %;	- 7 125	
57.04 %;		- 1 440		137.62
- 2 619		69.08 %;		
- 8 551		176.64 %.		
31.12.2006				
	42 581			7 496
21.37 %.				
- 23 145		50.78 %;	- 9 967	
39.89 %;		- 2 225		54.51 %;
- 3 337		27.49 %;		
- 3 907		118.86 %.		
30.06.2007				
	46 418			3 837
9.01%.				- 22 774
	1.63%;	- 10 162		1.96 %;
	- 1 973	12.77%;		- 3
432	2.85%;			- 8 077
	106.73%.			

.5.2.

.5.1.

V.

V.1.

V.1.1.

V.1.2.

V.1.3.

V.1.4.

V.2.

V.2.1.

	2004 .	2005 .	2006 .	30.06.2007 .
	158 435	313 345	420 569	468 106
()	25.88	30.63	33.32	38.61

V.2.2.

- : - 125 673 . .
- : - 1 092 855 . .
- : - 88 . .

V.2.3.

V.2.4.

30.06.2007 . “ ”

5

	(.)	
96/93	543	01/12/18
bg2030003110	651,800	15/01/08
bg 2030004118	1,000,000	07/01/09
bg2030005115	16,087,586	16/03/08
bg 2030006113	4,445,000	25/01/11
bg2030007111	10,889,582	24/01/12
bg2030105113	6,927,850	16/02/10
bg 2030106111	10,525,000	08/02/09
bg 2030107119	2,582,371	07/02/10
bg 2030202118	2,202,679	10/07/07
bg 2030203116	5,474,800	09/07/08
bg 2040001211	100,000	31/10/08
bg 2040002219	1,276,103	16/01/09
bg2040003217	236,000	08/01/13
bg2040007218	250,000	10/01/17
bg 2040102217	345,263	20/05/09
bg2040103215	4,158,614	05/02/10
bg2040104213	210,000	11/02/11
bg 2040302213	3,674,098	17/07/09
bg 2040303211	11,000	02/07/13

	(.)	
XS0271812447	7,823,320	26/10/11

XS 0145624432	33,249,110	15/01/13
---------------	------------	----------

V.2.5.

:

(. .)

BGN	31,925
EUR	10,867
USD	4,838
GBP	2,027
CHF	71

V.2.6.

“ ”

V.3.

V.4.

“ ”

30.06.2007 .

“ ”

”

,

,

,

;

:

“

”

,

,

,

30.06.2007 .

,

“ ”

“

”

,

.20.2

1

809/2004

,

2

.

V.5.

. 4.5.1.

2

2/2003 .

“ ”

,

,

• , / ,
— “ 5 : ” —
• “ ”
• , 5
• -
• “ ” :
“ — ” :
“ () , ”
“ ” — ,
“ ” .
• , / : ,
— / “ ” —
/ “ / ” — “ ” —
• “ ” — 5
• .
• :
• “ ” “ ” :
“ ” “ ” — ,
“ ” — ,
“ 2000 ” — “ ”
“ — ” — “ ” — “ ”
• “ ” — “ ” — “ ”
• — .
• , / : ,
— .
• 5
• ,
• .
• :
• :
• “ ” :
“ ” “ ” — ,
“ ” “ ” .

“ ”
“ ”

• — “ ”

5902127064,
: . , . ” 95, .2, .4

• — “ ”

6612286260,
: . , . ” 10, .210, . , .3, .17

• — “ ”

6604194503,
: . , . “ ” “ ”, .22 , . , .8, .30

“ ”
“ ”

• — “ ”

7207111080,
: . , . ” , .145, .1, .3, .7

“ 2000”
“ ”
“ ”
“ ”
31.12.2006 .

“ ”

_____ :

• — “ ”

4002246789,
: . , “ 11/13

“ ”
“ ”

• — “ ”

5710051226
: . , 16, .2, .5

“ — ”
“ ”
“ ”
“ ”
“ ”

-
-
-
- " " ' ,
- " " ' ,
-

31.12.2006 .

" / / -
" 99.

5811286928,

9571/1990 .

25

	()	
" " " 8139/2006 .	" " " 116	100 %
" " " 11749/2000 .	" " " 99	100 %
" " " 13357/2003 .	" " " 99	100%
" " " 11748/2000 .	" " " 14	100 %
" " " 1926/2001 .		100 %
" " " 3167/2006 .	" " " 13	100 %
" " " 523/2000 .		100 %

3076/2000 .	100 %
11728/2000 .	100 %
11794/2000 .	100 %
1296/2002 .	100 %
1145/2002	100 %
8138/2006 .	100 %
11703/2000 .	100 %
4151/2001 .	100 %
11734/2000 .	100 %
11727/2000 .	100 %
15477/1998 .	87 %
7971/1995 .	80 %
106/2006 .	77,46 %

	” - ” , . . . 4100/1995 . ”	51 %
	” - ” , . . . 14231/1996 . ” ” 99	50 %
	” - ” , . . . 19582/1993 . ” ” 99	47,72 %
	” - ” - 979/2000 . ” 2	40 %
	” - ” , . . . 1641/1999 ” 99	39,15 %
	” - ” , . . . 953/1996 . ”	38,75 %
	” ” , . . . 6971/2003 . ” ” 16	33 %
	” - ” , . . . 4279/2005 . ”	25 %
”	” ” 572/2004 . ” 15	100 %
”	” ” , . . . 571/2004 . ” ” 15	100 %
”	” - ” , . . . 12005/1999 . ” ” 99	100 %
”	” ” , . . . 11760/2000 . ” ” 99	57 %
”	” ” , . . . 14099/1999 . ” ” 99	25 %

5811286928

“ : . , “ ” 6
: “ ” -
“ ” - “ ” -
“ ” “ ” - “ ” -
“ ” “ ” -
“ ” :
• ;
• ;
• ;
/ () ,

V.2.

V.2.1.

N			
1.		01.07.2004 . -	01.07.2010 .
2.		08.12.2005 . -	08.12.2008 .
3.	e	01.07.2004 . -	01.07.2010 .
4.	.	03.08.2001 . -	03.08.2007 .
5.		18.10.2001 . -	18.10.2007 .
6.		16.06.2004 . -	16.06.2010 .
7.		03.08.2001 . -	03.08.2007 .
8.		16.06.2004 . -	16.06.2010 .
9.		18.10.2001 . -	18.10.2007 .
10	.	12.08.2002 . -	12.08.2008 .

V.2.2.

V.3.

		2006 .	06. 2007 .
1		8 446.00	4 705.00
2		8 286.96	4 705.00
3		10 287.60	4 705.00
4	. -	46 963.00	23 525.00
5		45 963.00	23 525.00
6		42 233.00	23 525.00
7		42 233.00	23 525.00
8		42 233.00	23 525.00
9		45 963.00	23 525.00
10	. -	45 963.00	23 525.00

- 2006 ., 30.06.2007 .,
- 2006 ., 30.06.2007 .,
- 2006 ., 30.06.2007 .,

V.4.

V.4.1.

2004 .	2005 .	2006 .	30.06.2007 .
926 .	1 111 .	1 330 .	1 488 .

2005 . / 377 ./ 30.06.2007 ., 2004 . / 562 ./,
2006 . /158 ./

“ ” “ ”
“ ”
” :
•
•
•
•
•
•
•
•
•
•
•
•
•

•

„

1

10

(.35, .1) “ ”

„

V.4.2.

V.4.3.

18.03.2004 „ / /

www.ccbank.bg /• /

V.5.

V.5.1.

30.06.2007 „

“ ”

V.5.2.

“ ” ,

,

.

VI.

()

VI.1.

,

5

30.06.2007 . 5 2 / / ,
5 :

			%
1.	2	49 625 290	68.20
2. Bank Austria Creditanstalt AG	,	7 105 379	9.77

3

31.12 2004, 2005, 2006, 04.01.2006 .

30.06.2007 .

	1 % 31.12.2004	1 % 31.12.2005	1 % 04.01.2006	1 % 31.12.2006	1 % 30.06.2007
.	16 739 032/51.77	1 014 693/3.14	1 478 539/3.05	6 348 526/8.73	1 920 894/2.64
.	1 325 882/4.10	1 520 438/4.70	2 357 932/4.86	1 400 498/1.92	0/0.00
.	1 616 958/5.00	1 616 958/5.00	2 425 437/5.00	3 218 385/4.42	3 218 385/4.42
.	953 218/2.95	953 218/2.95	1 429 827/2.95	2 050 240/2.82	0/0.00
.	783 726/2.42	783 726/2.42	1 175 589/2.42	587 646/0.81	0/0.00
.	6 686 264/20.68	21 944 090/67.86	32 838 860/67.70	49 258 290/67.70	49 625 290/68.20
HANSAPANK CLIENTS –	866 397/2.68	1 503 959/4.65	2 255 438/4.65	3 309 723/4.55	3 027 484/4.16
Bank Austria Creditanstal.	569 364/1.76	329 987/1.02	305 028/0.63	592 303/0.81	7 105 379/9.77
.	448 406/1.39	448 406/1.39	672 609/1.39	334 331/0.46	334 331/0.46
.	1 919 775/5.92	2 222 653/6.87	3 558 927/7.35	5 660 837/7.78	7 529 016/10.35
:	32 338 128/100.00	32 338 128/100.00	48 507 186/100.00	72 760 779/100.00	72 760 779/100.00

2004 ., “ ”
16 168 564 ,

32 338 128

1

§ 1, 13, “ ” , - 75.15 %

“ ” , 26.03.2003 . 20.12.2002 .,
: “ ” “ ”
“ ”

VI.3.

V.3.1.

213 . . 2 765 . . - 30.06.2007 . 8
() . 20%
3

“ ” . 6.3.2. , “ ” / ,
2007 “ ”
2007 “ ” / ,

V.3.2.

“ ” : , “ ”
) , , ;
) , ();
;

) , .145 - 5 ;
) , , ;
 , , , , ;
) ; " " " " " " " "

2004 . -

: 50 284 / . /

: 2.64 %.

	/	.47 ()	
	627519	.47.(1), .3	428
-	638693	.47.(1), .6	94
-	105009926	.47.(1), .6	207
	114006352	.47.(1), .6	84
	118018732	.47.(1), .6	65
	124040869	.47.(1), .6	32
	831360748	.47.(1), .6	16
	3511286287	.47.(1), .1	36
	4908285851	.47.(1), .1	3
	5101092977	.47.(1), .1	3
	5104242237	.47.(1), .1	2
	5208079116	.47.(1), .1	3
	5210118574	.47.(1), .1	1
	5507037333	.47.(1), .1	1
	5507251915	.47.(1), .1	5
	5508096053	.47.(1), .1	8
	5511171213	.47.(1), .1	5
	5604041966	.47.(1), .1	1
	5608258327	.47.(1), .1	7
	5701021872	.47.(1), .1	1
	5704012621	.47.(1), .1	2
	5706194459	.47.(1), .1	9
	5709051127	.47.(1), .1	1
	5709166506	.47.(1), .1	10
	5710051226	.47.(1), .1	41
	5804034521	.47.(1), .1	2
	5806082215	.47.(1), .1	2
	5806176248	.47.(1), .1	6
	5904221948	.47.(1), .1	8
	6007084555	.47.(1), .1	5
	6009308295	.47.(1), .1	2

	6102201462	.47.(1), .1	3
	6105015564	.47.(1), .1	2
	6110055860	.47.(1), .1	6
	6203150975	.47.(1), .1	4
	6204187747	.47.(1), .1	3
	6207042855	.47.(1), .1	3
	6209286260	.47.(1), .1	9
	6212043795	.47.(1), .1	1
	6301294030	.47.(1), .1	4
	6304040256	.47.(1), .1	8
	6306057622	.47.(1), .1	1
	6307074007	.47.(1), .1	4
	6310223451	.47.(1), .1	5
	6407250183	.47.(1), .1	2
	6508301714	.47.(1), .1	1
	6512034393	.47.(1), .1	6
	6602193806	.47.(1), .1	25
	6606038829	.47.(1), .1	4
	6610303060	.47.(1), .1	36
	6612286260	.47.(1), .1	2
	6804124545	.47.(1), .1	4
	6809026855	.47.(1), .1	6
	6902121047	.47.(1), .1	3
	6906018504	.47.(1), .1	1
	6907246849	.47.(1), .1	1
	6908151563	.47.(1), .1	4
	6908186404	.47.(1), .1	1
	6909228783	.47.(1), .1	10
	7005056849	.47.(1), .1	4
	7009221860	.47.(1), .1	58
	7012186506	.47.(1), .1	2
	7107301785	.47.(1), .1	5
	7311136646	.47.(1), .1	9
:			1 327

2005 .-

: 71 015 / . . /.

: 9.82 %.

1	2	3	4	5	6	7	8	9
	627519	.47/1/. 3		420	12.00%	420	390	810

" "	121076907	.47 /1/ .5		25	14.75%	6	1 216	1 222
	121749139	.47 /1/ .6		20	14.75%	6	0	6
	131181471	.47 /1/ .6		150	13.00%	150	776	926
	813091775	.47 /1/ .5		300	12.00%	292	0	292
	3511286287	.47/1/ .1		166	8.50%	85	0	85
	3511286287	.47/1/ .1		8	12.00%	8	0	8
	3511286287	.47/1/ .1		10	14.75%	0	0	0
	4512166668	.47/1/ .1		10	14.75%	3	0	3
	4607107622	.47 /1/ .2		4	12.50%	4	0	4
	4704241502	.47 /1/ .1		2	12.00%	2	0	2
	4908285851	.47 /1/ .1		5	13.00%	1	0	1
	4908285851	.47 /1/ .1		3	12.00%	1	0	1
	5101092977	.47 /1/ .1		10	12.75%	6	0	6
	5104242237	.47 /1/ .1		6	9.55%	1	0	1
	5110243844	.47 /1/ .1		2	8.30%	1	0	1
	5110243844	.47 /1/ .1		1	16.75%	0	0	0
	5110243844	.47 /1/ .1		6	11.00%	6	0	6
	5204087670	.47 /1/ .1		2	12.00%	1	0	1
	5204087670	.47 /1/ .1		1	13.00%	0	0	0
	5208079116	.47 /1/ .1		5	10.05%	2	0	2
	5208079116	.47 /1/ .1		6	12.75%	5	0	5
	5507037333	.47 /1/ .1		2	12.00%	1	0	1
	5507037333	.47 /1/ .1		1	13.00%	0	0	0
	55 07193510	.47 /1/ .2		5	13.75%	4	0	4
	5507251915	.47 /1/ .1		7	11.00%	7	0	7
	5507251915	.47 /1/ .1		2	12.00%	1	0	1
	5508096053	.47 /1/ .1		10	10.05%	4	0	4
	5508096053	.47 /1/ .1		3	12.00%	2	0	2
	5511171213	.47 /1/ .1		7	13.00%	4	0	4
	5511171213	.47 /1/ .1		2	12.00%	0	0	0
	5701021872	.47 /1/ .1		2	12.75%	1	0	1
	5701021872	.47 /1/ .1		1	12.00%	1	0	1
	5704012621	.47 /1/ .1		2	12.00%	1	0	1
	5706194459	.47 /1/ .1		6	9.04%	2	0	2
	5706194459	.47 /1/ .1		4	13.00%	3	0	3
	5706194459	.47 /1/ .1		2	12.00%	0	0	0
	5709051127	.47 /1/ .1		2	12.00%	1	0	1
	5709166506	.47 /1/ .1		20	12.75%	19	0	19
	5709166506	.47 /1/ .1		4	12.00%	2	0	2
	5710051226	.47 /1/ .1		978	7.50%	978	0	978
	5710051226	.47 /1/ .1		840	12.00%	842	0	842
	5711273526	.47 /1/ .1		2	13.75%	2	0	2
	5711273526	.47 /1/ .1		1	12.00%	1	0	1
	5711273526	.47 /1/ .1		1	16.75%	0	0	0
	5711273526	.47 /1/ .1		5	12.00%	5	0	5
	5804034521	.47 /1/ .1		8	12.00%	6	0	6

	5806082215	.47 /1/ .1		3	13.00%	1	0	1
	5806082215	.47 /1/ .1		1	12.00%	0	0	0
	5806176248	.47 /1/ .1		7	11.00%	4	0	4
	5810101228	.47 /1/ .1		978	7.50%	978	0	978
	5810101228	.47 /1/ .1		1	13.00%	0	0	0
	5904221948	.47 /1/ .1		7	11.00%	7	0	7
	5904221948	.47 /1/ .1		9	12.00%	7	0	7
	5904221948	.47 /1/ .1		4	16.75%	1	0	1
	6003313340	.47 /1/ .1		4	12.00%	1	0	1
	6007084555	.47 /1/ .1		3	12.00%	2	0	2
	6007084555	.47 /1/ .1		5	13.00%	4	0	4
	6009308295	.47 /1/ .1		3	13.00%	1	0	1
	6009308295	.47 /1/ .1		3	12.00%	2	0	2
	6011111917	.47 /1/ .1		36	9.00%	35	0	35
	6102101993	.47 /1/ .1		5	13.00%	3	0	3
	6102101993	.47 /1/ .1		3	12.00%	2	0	2
	6105015564	.47 /1/ .1		2	16.75%	2	0	2
	6108186869	.47 /1/ .2		40	7.50%	40	0	40
	6110055860	.47 /1/ .1		7	13.00%	4	0	4
	6110055860	.47 /1/ .1		4	12.00%	1	0	1
	6110055860	.47 /1/ .1		3	16.75%	0	0	0
	6112144523	.47 /1/ .1		10	12.75%	8	0	8
	6112144523	.47 /1/ .1		3	12.00%	1	0	1
	6203150975	.47 /1/ .1		3	13.75%	3	0	3
	6203150975	.47 /1/ .1		3	12.00%	3	0	3
	6204187747	.47 /1/ .1		7	12.75%	6	0	6
	6204187747	.47 /1/ .1		3	12.00%	3	0	3
	6204187747	.47 /1/ .1		1	16.75%	0	0	0
	6207042855	.47 /1/ .1		3	13.00%	1	0	1
	6207042855	.47 /1/ .1		1	12.00%	0	0	0
	6212043795	.47 /1/ .1		5	11.00%	3	0	3
	6212043795	.47 /1/ .1		2	12.00%	2	0	2
	6212043795	.47 /1/ .1		1	13.00%	1	0	1
	6302278029	.47 /1/ .1		1	12.00%	1	0	1
	6302278029	.47 /1/ .1		40	9.50%	36	0	36
	6304040256	.47 /1/ .1		15	12.75%	13	0	13
	6304040256	.47 /1/ .1		3	12.00%	3	0	3
	6304040256	.47 /1/ .1		1	13.00%	0	0	0
	6306283105	.47 /1/ .1		7	12.00%	5	0	5
	6306283105	.47 /1/ .1		5	13.00%	5	0	5
	6307074007	.47 /1/ .1		15	11.00%	15	0	15
	6307074007	.47 /1/ .1		2	16.75%	1	0	1
	6307074007	.47 /1/ .1		2	12.00%	0	0	0
	6407250183	.47 /1/ .1		20	12.75%	18	0	18
	6407250183	.47 /1/ .1		3	12.00%	1	0	1
	6507151728	.47 /1/ .1		20	13.75%	20	0	20

	6507151728	.47 /1/ .1		8	12.00%	5	0	5
	6508301714	.47 /1/ .1		2	9.04%	1	0	1
	6508301714	.47 /1/ .1		1	10.05%	0	0	0
	6511195080	.47 /1/ .1		4	12.00%	2	0	2
	6511195080	.47 /1/ .1		2	12.00%	0	0	0
	6512034393	.47 /1/ .1		7	12.00%	3	0	3
	6512034393	.47 /1/ .1		7	12.00%	0	0	0
	6602193806	.47 /1/ .1		25	8.00%	7	0	7
	6606038829	.47 /1/ .1		15	12.75%	14	0	14
	6606038829	.47 /1/ .1		4	13.00%	0	0	0
	6606151413	.47 /1/ .1		8	13.75%	8	0	8
	6606151413	.47 /1/ .1		2	12.00%	0	0	0
	6610166394	.47 /1/ .1		7	13.75%	6	0	6
	6610166394	.47 /1/ .1		5	12.00%	2	0	2
	6610166394	.47 /1/ .1		1	13.00%	0	0	0
	6610303060	.47 /1/ .1		30	8.50%	29	0	29
	6610303060	.47 /1/ .1		15	11.00%	14	0	14
	6610303060	.47 /1/ .1		9	12.00%	4	0	4
	6610303060	.47 /1/ .1		3	13.00%	2	0	2
	6610303060	.47 /1/ .1		2	14.75%	2	0	2
	6610303060	.47 /1/ .1		1	16.75%	1	0	1
	6612286260	.47 /1/ .1		18	10.00%	14	0	14
	6612286260	.47 /1/ .1		49	9.00%	49	0	49
	6612286260	.47 /1/ .1		5	13.00%	2	0	2
	6612286260	.47 /1/ .1		20	12.00%	0	0	0
	6707071065	.47 /1/ .1		5	12.00%	5	0	5
	6711032222	.47 /1/ .1		32	9.00%	31	0	31
	6711032222	.47 /1/ .1		2	12.00%	0	0	0
	6803235415	.47 /1/ .1		3	12.00%	2	0	2
	6804124545	.47 /1/ .1		4	13.00%	3	0	3
	6807103119	.47 /1/ .1		5	12.75%	3	0	3
	6807103119	.47 /1/ .1		2	13.00%	0	0	0
	6812271420	.47 /1/ .1		4	13.75%	3	0	3
	6905180742	.47 /1/ .1		117	8.90%	117	0	117
	6905180742	.47 /1/ .1		4	14.75%	0	0	0
	6906018504	.47 /1/ .1		5	12.00%	3	0	3
	6907246849	.47 /1/ .1		3	12.00%	2	0	2
	6908186404	.47 /1/ .1		5	12.00%	4	0	4
	6908186404	.47 /1/ .1		3	13.00%	1	0	1
	7005056849	.47 /1/ .1		5	13.00%	3	0	3
	7007214012	.47 /1/ .1		1	12.00%	1	0	1
	7012186506	.47 /1/ .1		2	12.75%	2	0	2
	7012186506	.47 /1/ .1		4	12.00%	3	0	3
	7012186506	.47 /1/ .1		1	13.00%	1	0	1
	7012186506	.47 /1/ .1		1	16.75%	0	0	0
	7107301785	.47 /1/ .1		7	13.75%	7	0	7

	7107301785	.47 /1/ .1		5	12,00%	4	0	4
	7107301785	.47 /1/ .1		2	16,75%	0	0	0
	7211149043	.47 /1/ .1		35	9,50%	35	0	35
	7211149043	.47 /1/ .1		2	12,00%	0	0	0
	7304098331	.47 /1/ .1		3	12,00%	2	0	2
	7309256511	.47 /1/ .1		5	15,00%	3	0	3
	7309256511	.47 /1/ .1		1	12,00%	0	0	0
	7309256511	.47 /1/ .1		2	13,00%	2	0	2
	7309256511	.47 /1/ .1		2	16,75%	2	0	2
	7311136646	.47 /1/ .1		4	12,75%	3	0	3
	7311136646	.47 /1/ .1		11	13,75%	11	0	11
	7311136646	.47 /1/ .1		9	13,75%	8	0	8
	7311136646	.47 /1/ .1		2	14,75%	2	0	2
	7311182868	.47 /1/ .1		2	12,00%	1	0	1
	7311182868	.47 /1/ .1		1	16,75%	0	0	0
	7404106683	.47 /1/ .1		3	12,00%	1	0	1
	7404221769	.47 /1/ .1		5	13,00%	3	0	3
	7404221769	.47 /1/ .1		10	11,00%	10	0	10
	7404221769	.47 /1/ .1		2	16,75%	0	0	0
	7504137646	.47 /1/ .1		4	12,00%	3	0	3
	7504137646	.47 /1/ .1		2	16,75%	0	0	0
	7508195574	.47 /1/ .1		17	12,00%	6	0	6
	7508195574	.47 /1/ .1		1	13,00%	1	0	1
	7508195574	.47 /1/ .1		3	12,00%	2	0	2
	7603140016	.47 /1/ .1		3	13,00%	2	0	2
	7603140016	.47 /1/ .1		1	12,00%	0	0	0
	7604136643	.47 /1/ .1		1	12,00%	1	0	1
	7604136643	.47 /1/ .1		2	12,00%	0	0	0
	7610046852	.47 /1/ .1		3	12,00%	1	0	1
	7610046852	.47 /1/ .1		2	16,75%	0	0	0
	7705118226	.47 /1/ .1		1	13,00%	1	0	1
	7906072256	.47 /1/ .2		1	12,00%	1	0	1
	:			5 000		4 592	2 382	6 974

2006 . -

: 100 255 / . . /.

: 7.75 %.

1	02	03	04	05	06	07	08
	627519	.47.(1), .3		418	10.00%	29.12.2005	80600 - -1470
	103826324	.47.(1), .6		80	16.00%	16.02.2004	80800 - -0888
" "	121076907	.47.(1), .5	/	4	14.75%	06.10.2004	01100 - 0005
	121749139	.47.(1), .6	/	8	14.75%	30.06.2005	01100 - 0019

	131181471	.47.(1), .6		392	10.00%	27.07.2006	80600 - -6369
	131181471	.47.(1), .6		500	10.50%	19.04.2006	01100 - -1148
	131204804	.47.(1), .6		22	10.50%	06.03.2006	80600 - -1519
	813091775	.47.(1), .6		189	12.00%	18.11.2005	80800 - -2616
	3511286287	.47.(1), .1		1	10.00%	12.02.2004	79000 - -0169
	3511286287	.47.(1), .1		17	8.50%	01.03.2004	80600 - -1614
	3511286287	.47.(1), .1		18	8.00%	02.06.2006	80600 - -6164
	4607107622	.47.(1), .2		2	12.50%	09.11.2005	81900 - -4808
	4704241502	.47.(1), .1		10	8.00%	18.09.2006	03700 - -0645
	4908148479	.47.(1), .1		2	6.90%	01.06.2004	79000 - -0181
	4908148479	.47.(1), .1		15	6.90%	07.11.2006	79000 - -0217
	4908148479	.47.(1), .1		75	8.00%	23.12.2005	80600 - -5493
	5007262906	.47.(1), .2		16	11.00%	22.08.2006	80600 - -6483
	5101092977	.47.(1), .1		6	6.90%	05.05.2006	79000 - -0258
	5101092977	.47.(1), .1		16	8.00%	02.08.2006	79000 - -0198
	5104242237	.47.(1), .1		13	8.00%	22.02.2006	81900 - -5281
	5110243844	.47.(1), .1		4	8.00%	20.04.2005	42700 - -1236
	5204087670	.47.(1), .1		6	6.90%	22.11.2006	81600 - -5715
	5208079116	.47.(1), .1		1	11.26%	07.04.2003	79600 - -0018
	5208079116	.47.(1), .1		4	6.90%	23.03.2005	79600 - -1768
	5507037333	.47.(1), .1		1	6.90%	16.11.2004	80400 - -0009
	5507251915	.47.(1), .1		3	6.90%	15.04.2005	03900 - -0002
	5507251915	.47.(1), .1		6	6.90%	20.12.2005	03900 - -0115
	5508096053	.47.(1), .1		2	6.90%	13.12.2004	39100 - -0103
	5508096053	.47.(1), .1		5	6.90%	16.05.2006	39100 - -3566
	5508096053	.47.(1), .1		60	6.40%	28.09.2006	39100 - -4002
	5511171213	.47.(1), .1		2	6.90%	01.08.2003	80800 - -0058
	5706194459	.47.(1), .1		2	13.00%	19.08.2004	39100 - -1599
	5706194459	.47.(1), .1		6	6.90%	16.03.2004	39100 - -0075
	5710051226	.47.(1), .1		451	12.00%	07.12.2005	79000 - -0251
	5710051226	.47.(1), .1		1922	7.50%	25.03.2005	80800 - -2428
	5711118849	.47.(1), .2		6	12.50%	11.08.2005	91800 - -2468
	5804034521	.47.(1), .1		3	6.90%	01.09.2004	80900 - -0425
	5804034521	.47.(1), .1		49	8.00%	21.09.2006	80900 - -6096
	5806158795	.47.(1), .2		4	10.50%	02.02.2006	91800 - -0111
	5806176248	.47.(1), .1		6	8.00%	14.06.2006	79000 - -0174
	5810101228	.47.(1), .1		1922	7.50%	25.03.2005	80800 - -2424
	5904221948	.47.(1), .1	/	3	14.75%	17.02.2005	79000 - 0027
	5904221948	.47.(1), .1		6	8.00%	05.12.2005	80600 - -5457
	5904221948	.47.(1), .1		7	6.90%	24.07.2003	79000 - -0125
	5904221948	.47.(1), .1		221	6.40%	03.04.2006	80600 - -5901
	6001131480	.47.(1), .1		19	8.00%	23.08.2006	80700 - -3729
	6004163136	.47.(1), .1		3	8.00%	21.12.2006	03600 - -1168
	6007084555	.47.(1), .1		5	8.00%	20.12.2006	92000 - -3789

	6011111917	.47.(1), .1			34	9.00%	24.03.2005	81200	-	-2708
	6101044538	.47.(1), .1			3	6.90%	18.04.2003	91900	-	-0002
	6102101993	.47.(1), .1	/		1	14.75%	16.12.2005	79000	-	2265
	6102101993	.47.(1), .1			2	6.90%	19.12.2002	81200	-	-0006
	6102101993	.47.(1), .1			6	8.00%	04.05.2006	81200	-	-4691
	6105015564	.47.(1), .1			2	12.00%	23.10.2006	36400	-	-2207
	6105015564	.47.(1), .1	/		2	14.75%	08.12.2004	36400	-	0013
	6108186869	.47.(1), .2			38	7.50%	18.11.2005	80600	-	-5367
	6110055860	.47.(1), .1			1	6.90%	18.02.2003	79000	-	-0052
	6110055860	.47.(1), .1			6	8.00%	20.01.2006	79000	-	-0135
	6112144523	.47.(1), .1			20	8.00%	24.10.2006	80400	-	-1000
	6203150975	.47.(1), .1	/		1	14.75%	16.12.2005	79000	-	2807
	6203150975	.47.(1), .1			1	12.00%	14.07.2006	79400	-	-3998
	6203150975	.47.(1), .1			2	6.90%	01.10.2003	79400	-	-0107
	6203150975	.47.(1), .1			3	6.90%	24.10.2005	79400	-	-2871
	6204187747	.47.(1), .1			2	6.90%	28.01.2003	81900	-	-0006
	6204187747	.47.(1), .1			5	8.00%	08.06.2005	81900	-	-3579
	6207042855	.47.(1), .1			1	6.90%	09.08.2006	81500	-	-5364
	6207042855	.47.(1), .1			2	6.90%	09.05.2003	81500	-	-0015
	6212043795	.47.(1), .1			5	8.00%	21.03.2006	42700	-	-2073
	6301186946	.47.(1), .8			1	6.90%	24.06.2005	79000	-	-0229
	6302278029	.47.(1), .1	/		2	14.75%	16.12.2005	79000	-	2747
	6302278029	.47.(1), .1			31	6.40%	08.02.2005	80300	-	-0995
	6304040256	.47.(1), .1	/		1	14.75%	03.02.2006	9200	-	0021
	6304040256	.47.(1), .1			2	6.90%	13.11.2003	92000	-	-0001
	6304040256	.47.(1), .1			17	8.00%	23.05.2006	9200	-	-3031
	6306283105	.47.(1), .1			1	12.00%	29.11.2006	81000	-	-6065
	6306283105	.47.(1), .1			2	8.00%	14.10.2005	81000	-	-3789
	6307074007	.47.(1), .1			12	8.00%	15.11.2005	79700	-	-0991
	6407250183	.47.(1), .1			1	6.90%	20.02.2004	81700	-	-0143
	6407250183	.47.(1), .1			13	6.90%	14.06.2005	81700	-	-2964
	6412177301	.47.(1), .1			3	6.90%	11.04.2005	80600	-	-0947
	6412177301	.47.(1), .1			15	8.00%	25.05.2006	80600	-	-6129
	6507151728	.47.(1), .1			6	6.90%	06.04.2005	81400	-	-0078
	6507151728	.47.(1), .1			17	8.00%	28.09.2005	81400	-	-2158
	6511195080	.47.(1), .1	/		1	14.75%	16.12.2005	79000	-	2832
	6511195080	.47.(1), .1			1	12.00%	15.12.2005	79200	-	-1481
	6511195080	.47.(1), .1			19	6.90%	15.06.2006	79200	-	-1771
	6512034393	.47.(1), .1			2	6.90%	29.10.2003	80900	-	-0075
	6512034393	.47.(1), .1			9	8.00%	18.07.2006	80900	-	-5734
	6604194503	.47.(1), .1			10	6.90%	25.01.2005	79000	-	-0196
	6606038829	.47.(1), .1			1	15.00%	08.08.2006	91800	-	-3057
	6606038829	.47.(1), .1			12	6.90%	31.03.2005	91800	-	-2144
-	6606151413	.47.(1), .1			2	6.90%	04.07.2005	03700	-	-0016

-	6606151413	.47.(1), .1		7	8.00%	10.05.2006	03700 - -0411
	6607096964	.47.(1), .1		13	8.00%	29.08.2006	80600 - -6522
	6610166394	.47.(1), .1		4	6.90%	18.02.2003	79000 - -0054
	6610303060	.47.(1), .1		1	6.90%	11.06.2003	80600 - -0094
	6610303060	.47.(1), .1	/	2	14.75%	16.09.2004	80600 - 0004
	6610303060	.47.(1), .1	/	2	13.00%	19.01.2005	79000 - -00018
	6610303060	.47.(1), .1		12	8.00%	29.03.2005	80600 - -4181
	6610303060	.47.(1), .1		28	8.50%	11.10.2004	80600 - -3190
	6612286260	.47.(1), .1		8	6.90%	21.02.2003	79000 - -0060
	6612286260	.47.(1), .1		75	8.00%	19.07.2006	79000 - -0190
	6707071065	.47.(1), .1		1	15.00%	19.12.2006	80808 - -2321
	6707071065	.47.(1), .1		79	6.40%	05.09.2006	80800 - -1717
	6711032222	.47.(1), .1		25	8.00%	01.09.2005	81300 - -1412
	6804124545	.47.(1), .1		2	13.00%	05.05.2004	79000 - -0028
	6812271420	.47.(1), .2		2	13.75%	11.04.2005	79100 - -1760
	6902121047	.47.(1), .1		1	12.00%	03.04.2006	80808 - -1666
	6902121047	.47.(1), .1		12	10.00%	27.05.2004	80300 - -0143
	6902281554	.47.(1), .1		1	12.00%	25.04.2006	80700 - -3336
	6905180742	.47.(1), .1	/	4	14.75%	20.07.2005	79400 - 0010
	6905180742	.47.(1), .1		19	6.90%	07.04.2006	79400 - -3601
	6905180742	.47.(1), .1		116	6.40%	15.08.2005	79400 - -2515
	6906018504	.47.(1), .1		3	6.90%	17.12.2003	79000 - -0159
	6906018504	.47.(1), .1		138	6.40%	16.08.2006	80600 - -6428
	6907246849	.47.(1), .1		1	12.00%	14.06.2006	01100 - -1214
	6907246849	.47.(1), .1		5	6.90%	05.03.2004	01100 - -0001
	6908186404	.47.(1), .1	/	1	14.75%	06.07.2006	79000 - 2928
	6908186404	.47.(1), .1	/	2	13.00%	07.04.2005	79000 - -00031
	6908186404	.47.(1), .1		4	6.90%	18.02.2003	79000 - -0048
	7005056849	.47.(1), .1		7	6.90%	22.11.2006	79000 - -0221
	7012186506	.47.(1), .1	/	1	13.00%	26.10.2005	79000 - -00039
	7012186506	.47.(1), .1		2	8.00%	13.06.2006	7900 - -0173
	7012186506	.47.(1), .1		4	6.90%	18.02.2003	79000 - -0050
	7104065599	.47.(1), .1	/	1	14.75%	16.12.2005	79000 - 2483
	7104065599	.47.(1), .1	/	1	13.00%	10.06.2005	36400 - -00021
	7104065599	.47.(1), .1		2	6.90%	14.04.2005	36400 - -0090
	7104065599	.47.(1), .1		3	8.00%	24.01.2006	36400 - -1626
	7104065599	.47.(1), .1		6	8.00%	30.06.2006	36400 - -1967
	7107301785	.47.(1), .1	/	1	14.75%	01.10.2004	79000 - 0009
	7107301785	.47.(1), .1		16	6.90%	30.11.2006	79000 - -0224
	7201256574	.47.(1), .1	/	1	13.00%	29.03.2006	79000 - -00048
	7201256574	.47.(1), .1		8	6.90%	13.07.2006	79000 - -0263
	7201256574	.47.(1), .1		79	8.00%	28.11.2005	79000 - -5413
	7211149043	.47.(1), .1		31	6.90%	24.03.2005	79600 - -1743
	7309256511	.47.(1), .2	/	1	14.75%	03.11.2004	80600 - 0034

	7309256511	.47.(1), .2	/		2	13.00%	18.02.2005	80600	-	-00033
	7309256511	.47.(1), .2			2	15.00%	20.10.2003	79000	-	-0004
	7309256511	.47.(1), .2			3	14.75%	15.12.2006	79000	-	-7183
	7309256511	.47.(1), .2			19	8.00%	18.05.2006	79000	-	-6103
	7404106683	.47.(1), .1			2	6.90%	20.05.2003	79000	-	-0107
	7404221769	.47.(1), .1	/		5	14.75%	30.12.2004	79000	-	0025
	7404221769	.47.(1), .1			7	6.90%	23.05.2006	91900	-	-3930
	7404221769	.47.(1), .1			7	6.90%	15.12.2005	91900	-	-3773
	7508195574	.47.(1), .1	/		2	14.75%	05.07.2006	36400	-	0033
	7508195574	.47.(1), .1			3	6.90%	16.05.2005	36400	-	-0093
	7512241788	.47.(1), .2	/		4	14.75%	06.12.2006	80600	-	-00686
	7512241788	.47.(1), .2			16	13.75%	17.03.2005	42300	-	-1939
	7512241788	.47.(1), .2			60	8.00%	21.09.2006	80600	-	-1725
	7602168472	.47.(1), .1	/		3	14.75%	16.05.2006	03900	-	0013
	7603140016	.47.(1), .1			18	6.90%	04.04.2006	81700	-	-3364
	7610046852	.47.(1), .1	/		1	14.75%	24.08.2005	79000	-	0042
	7610046852	.47.(1), .1			2	6.90%	03.05.2005	79000	-	-0217
	7610046852	.47.(1), .1			7	8.00%	20.10.2006	79000	-	-0212
	7610141757	.47.(1), .1			19	6.90%	23.06.2006	01100	-	-1222
	7701258446	.47.(1), .2			1	12.00%	01.12.2005	80600	-	-5445
	7705118226	.47.(1), .1			3	8.00%	24.03.2006	35400	-	-1327
	:				7 769					

30.06.2007 .-

: 111 901/ . J.

: 7.34 %.

1	2	3	4	5	6	7	8
	627519	.45, .1, .2		423	10	29. .05	80600 - -1470
	131181471	.45, .1, .6		501	9,5	19. .06	01100 - -1148
	6610166394	.45, .1, .1		7	6,9	12. .07	79000 - -0262
	6610166394	.45, .1, .1		1	6,9	18. .03	79000 - -0054
	5709051127	.45, .1, .1		7	6,9	18. .03	79000 - -0044
	5904221948	.45, .1, .1		219	6,4	03. .06	80600 - -5901
	5904221948	.45, .1, .1		15	6,9	01. .07	80600 - -7326
	5904221948	.45, .1, .1	/	4	14,75	17. .05	79000 - 0027
	5904221948	.45, .1, .1		5	6,9	24. .03	79000 - -0125
	6007084555	.45, .1, .1		1	6,9	05. .03	92000 - -0007
	6007084555	.45, .1, .1		4	6,9	20. .06	92000 - -3789
	7204156516	.45, .1, .1		18	6,9	27. .06	42300 - -4586
	7204156516	.45, .1, .1	/	1	14,75	13. .06	42300 - 0035
	7602168472	.45, .1, .1	/	1	14,75	16. .06	03900 - 0013
	6908053464	.45, .1, .1	/	1	14,75	25. .06	81100 - 0012
	6908053464	.45, .1, .1	/	3	14,75	21. .06	81100 - 0029

	6908053464	.45, .1, .1			5	6,9	24.	.06	81100	-	-0216
	6908053464	.45, .1, .1			20	6,9	23.	.07	81100	-	-5699
	6108186869	.45, .1, .4			38	7,5	18.	.05	80600	-	-5367
	4512166668	.45, .1, .1	/		1	14,75	07.	.04	79000	-	0015
	4512166668	.45, .1, .1			10	6,9	28.	.07	79000	-	-0282
	6812271420	.45, .1, .4			1	13,75	11.	.05	79100	-	-1760
	6507151728	.45, .1, .1			7	6,9	06.	.05	81400	-	-0078
	6507151728	.45, .1, .1			16	6,9	28.	.05	81400	-	-2158
	5804034521	.45, .1, .1			6	6,9	01.	.04	80900	-	-0425
	5804034521	.45, .1, .1			49	6,4	21.	.06	80900	-	-6096
	6606038829	.45, .1, .1	/		1	13	15.	.05	91800	-	-00046
	6606038829	.45, .1, .1			24	6,9	12.	.07	91800	-	-3367
	5507251915	.45, .1, .1			15	6,9	07.	.07	03900	-	-0447
	5508096053	.45, .1, .1			3	6,9	16.	.06	39100	-	-3566
	5508096053	.45, .1, .1			60	6,4	28.	.06	39100	-	-4002
	5508096053	.45, .1, .1			2	6,9	13.	.04	39100	-	-0103
	7504137646	.45, .1, .1			25	6,9	01.	.07	79000	-	-0277
	6202176548	.45, .1, .1			2	6,9	29.	.07	39400	-	-0232
	4704241502	.45, .1, .1			9	6,9	18.	.06	03700	-	-0645
	6207042855	.45, .1, .1			2	6,9	09.	.03	81500	-	-0015
	6207042855	.45, .1, .1			1	6,9	04.	.07	81500	-	-6398
	7309256511	.45, .1, .4			1	14,75	15.	.06	80600	-	-7183
	7309256511	.45, .1, .4			17	8	18.	.06	80600	-	-6103
	7309256511	.45, .1, .4	/		1	13	18.	.05	80600	-	-00033
	7309256511	.45, .1, .4			2	15	20.	.03	79000	-	-0004
	5704012621	.45, .1, .1	/		1	14,75	16.	.05	79000	-	2721
	6306283105	.45, .1, .1			1	6,9	14.	.05	81000	-	-3489
	5101092977	.45, .1, .1			7	6,9	05.	.06	79000	-	-0258
	5101092977	.45, .1, .1			9	6,9	02.	.06	79000	-	-0198
	6101044538	.45, .1, .1			2	6,9	29.	.07	04002	-	-0005
	6612286260	.45, .1, .1			65	6,9	19.	.06	79000	-	-0190
	6011111917	.45, .1, .1			33	6,4	24.	.05	81200	-	-2708
	7512241788	.45, .1, .4			15	13,75	17.	.05	42300	-	-1939
	7512241788	.45, .1, .4	/		4	14,75	06.	.06	80600	-	-00686
	7512241788	.45, .1, .4			69	8	21.	.06	80600	-	-1725
	6506213050	.45, .1, .1	/		1	14,75	16.	.05	79000	-	2676
	6506213050	.45, .1, .1			1	11	14.	.05	80600	-	-1270
	6009308295	.45, .1, .1			1	6,9	07.	.04	35400	-	-0202
	6907246849	.45, .1, .1			6	6,9	05.	.04	01100	-	-0001
	6907246849	.45, .1, .1			1	12	14.	.06	01100	-	-1214
	7404221769	.45, .1, .1			5	6,9	23.	.06	91900	-	-3930
	6604194503	.45, .1, .1			106	6,9	25.	.05	79000	-	-0196
	6902121047	.45, .1, .1			14	10	27.	.04	80300	-	-0143
	7909111736	.45, .1, .1			5	6,9	15.	.06	91900	-	-4184
	5104242237	.45, .1, .1			10	6,9	22.	.06	81900	-	-5281
	7612303055	.45, .1, .1			1	6,9	17.	.05	81000	-	-0186
	6412177301	.45, .1, .1			1	6,9	11.	.05	80600	-	-0947
	6412177301	.45, .1, .1			14	6,9	25.	.06	80600	-	-6129

	6001131480	.45, .1, .1			8	6,9	23.	.06	80700	-	-3729
	4908148479	.45, .1, .1			75	6,4	23.	.05	80600	-	-5493
	4908148479	.45, .1, .1			18	6,9	23.	.07	79000	-	-0245
	4908148479	.45, .1, .1			2	6,9	01.	.04	79000	-	-0181
	5110243844	.45, .1, .1			4	6,9	20.	.05	42700	-	-1236
	7211149043	.45, .1, .1			30	6,4	24.	.05	79600	-	-1743
	6711032222	.45, .1, .1			22	8	01.	.05	81300	-	-1412
	5806176248	.45, .1, .1			5	6,9	14.	.06	79000	-	-0174
	6901043818	.45, .1, .1			1	6,9	16.	.05	80600	-	-0921
	6901043818	.45, .1, .1			7	6,9	12.	.07	80600	-	-7576
	6306057622	.45, .1, .1			132	6,4	12.	.07	80600	-	-7345
	6307074007	.45, .1, .1			11	6,9	15.	.05	79700	-	-0991
	6307074007	.45, .1, .1	/		1	13	04.	.06	79700	-	-00039
	6307074007	.45, .1, .1	/		2	14,75	10.	.04	79700	-	0005
	6307074007	.45, .1, .1			2	6,9	04.	.04	79700	-	-0010
	813091775	.45, .1, .6			140	12	18.	.05	80800	-	-2616
	5706194459	.45, .1, .1			2	13	19.	.04	39100	-	-1599
	5706194459	.45, .1, .1			6	6,9	16.	.04	39100	-	-0075
" "	121076907	.45, .1, .5	/		6	14,75	06.	.04	01100	-	0005
" "	121076907	.45, .1, .5	/		2	14,75	06.	.04	01100	-	0006
	5204087670	.45, .1, .1			2	6,9	22.	.06	81600	-	-5715
	6610303060	.45, .1, .1	/		1	13	19.	.05	79000	-	-00018
	6610303060	.45, .1, .1			6	6,9	31.	.07	80600	-	-1710
	6610303060	.45, .1, .1			3	6,9	11.	.03	80600	-	-0094
	6610303060	.45, .1, .1			11	6,9	29.	.05	80600	-	-4181
	6610303060	.45, .1, .1			27	6,4	11.	.04	80600	-	-3190
	7311182868	.45, .1, .1			52	6,4	15.	.07	81500	-	-0189
	7705118226	.45, .1, .1			5	6,9	17.	.07	35400	-	-2181
	4607107622	.45, .1, .4			1	12	30.	.06	81903	-	-1342
	4607107622	.45, .1, .4			1	12,5	09.	.05	81900	-	-4808
	5208079116	.45, .1, .1			4	6,9	23.	.05	79600	-	-1768
	4903052230	.45, .1, .1			7	6,9	27.	.07	81300	-	-2891
	7003113826	.45, .1, .1	/		3	14,75	22.	.07	79000	-	3217
	7610046852	.45, .1, .1			6	6,9	20.	.06	79000	-	-0212
	7610046852	.45, .1, .1			3	6,9	03.	.05	79000	-	-0217
	7711046640	.45, .1, .1			5	6,9	15.	.04	79000	-	-0174
	7711046640	.45, .1, .1			124	6,4	25.	.07	80600	-	-7302
	7711046640	.45, .1, .1			16	6,9	15.	.07	79000	-	-0239
	5007262906	.45, .1, .4			9	11	22.	.06	80600	-	-6483
	6203150975	.45, .1, .1	/		1	14,75	05.	.07	79400	-	0024
	6203150975	.45, .1, .1			13	6,9	09.	.07	79400	-	-5018
	6203150975	.45, .1, .1			3	6,9	01.	.03	79400	-	-0107
	6707157976	.45, .1, .1			9	6,9	12.	.07	80300	-	-2963
	7508195574	.45, .1, .1			4	6,9	16.	.05	36400	-	-0093
	5308073493	.45, .1, .1			5	6,9	28.	.07	81100	-	-5401
	6905180742	.45, .1, .1			17	6,9	07.	.06	79400	-	-3601
	6905180742	.45, .1, .1			160	6,4	21.	.07	79400	-	-5048
	7012186506	.45, .1, .1			1	6,9	13.	.06	79000	-	-0173
	7012186506	.45, .1, .1	/		1	13	26.	.05	79000	-	-00039

	7012186506	.45, .1, .1		4	6,9	18.	.03	79000	- -0050
	6209273220	.45, .1, .1		7	6,9	15.	.07	79500	- -6615
	6204187747	.45, .1, .1		15	6,9	18.	.07	81900	- -6639
	6607096964	.45, .1, .1		1	6,9	01.	.06	80600	- -1463
	6607096964	.45, .1, .1		11	6,9	29.	.06	80600	- -6522
	7005304591	.45, .1, .1		1	12	10.	.06	80900	- -4799
	6511195080	.45, .1, .1		95	6,4	21.	.07	79200	- -2354
	6511195080	.45, .1, .1		1	12	15.	.05	79200	- -1481
	6511195080	.45, .1, .1		18	6,9	15.	.06	79200	- -1771
	103826324	.45, .1, .6		45	12	16.	.04	80800	- -0888
	5710051226	.45, .1, .1		1849	6,4	25.	.05	80800	- -2428
	5710051226	.45, .1, .1		470	6,9	07.	.05	79000	- -0251
	6707071065	.45, .1, .1		80	6,4	05.	.06	80800	- -1717
	6804124545	.45, .1, .1		2	13	05.	.04	79000	- -0028
	6809046954	.45, .1, .1		5	6,9	19.	.07	03000	- -0103
	7303056270	.45, .1, .1		7	6,9	18.	.07	79000	- -0264
	7610141757	.45, .1, .1		18	6,9	23.	.06	01100	- -1222
	7201256574	.45, .1, .1	/	1	13	29.	.06	79000	- -00048
	7201256574	.45, .1, .1		10	6,9	13.	.06	79000	- -0263
	7201256574	.45, .1, .1		77	6,4	28.	.05	80600	- -5413
	6004163136	.45, .1, .1		2	6,9	21.	.06	03600	- -1168
	6906018504	.45, .1, .1		3	6,9	17.	.03	79000	- -0159
	6906018504	.45, .1, .1		137	6,4	16.	.06	80600	- -6428
	6908186404	.45, .1, .1	/	2	14,75	06.	.06	79000	- 2928
	6908186404	.45, .1, .1	/	2	14,75	09.	.05	79000	- 0029
	6908186404	.45, .1, .1	/	1	13	07.	.05	79000	- -00031
	6908186404	.45, .1, .1		5	6,9	18.	.03	79000	- -0048
	6708216292	.45, .1, .1		4	6,9	16.	.07	03300	- -0052
	6708216292	.45, .1, .1		2	6,9	10.	.04	80600	- -0534
	6112144523	.45, .1, .1		19	6,9	24.	.06	80400	- -1000
	6112144523	.45, .1, .1	/	3	14,75	16.	.05	79000	- 2738
	6112144523	.45, .1, .1		3	6,9	18.	.05	80400	- -0047
	131204804	.45, .1, .6		21	10,5	06.	.06	80600	- -1519
	7107301785	.45, .1, .1		15	6,9	30.	.06	79000	- -0224
	6304303054	.45, .1, .4	/	1	14,75	17.	.06	42304	- -00072
	7104065599	.45, .1, .1	/	1	13	10.	.05	36400	- -00021
	7104065599	.45, .1, .1	/	1	14,75	16.	.05	79000	- 2483
	7104065599	.45, .1, .1		3	6,9	14.	.05	36400	- -0090
	7104065599	.45, .1, .1		6	6,4	30.	.06	36400	- -1967
	7104065599	.45, .1, .1	/	1	14,75	04.	.06	36400	- -00159
	7104065599	.45, .1, .1		3	6,9	24.	.06	36400	- -1626
	7005056849	.45, .1, .1		1	6,9	11.	.04	79000	- -0173
	6302278029	.45, .1, .1		28	6,4	08.	.05	80300	- -0995
	6302278029	.45, .1, .1	/	2	14,75	16.	.05	79000	- 2747
	6803235415	.45, .1, .1		2	6,9	10.	.05	79300	- -0174
	6407250183	.45, .1, .1		11	6,9	14.	.05	81700	- -2964
	6407250183	.45, .1, .1		2	6,9	20.	.04	81700	- -0143
	7603081079	.45, .1, .1		8	6,9	21.	.07	01100	- -1599

	7603140016	.45, .1, .1			17	6,9	04.	.06	81700	-	-3364
	6903306261	.45, .1, .1	/		4	14,75	15.	.04	80600	-	0047
	6102101993	.45, .1, .1			2	6,9	19.	.02	81200	-	-0006
	6102101993	.45, .1, .1			5	6,9	04.	.06	81200	-	-4691
	6110055860	.45, .1, .1			12	6,9	22.	.07	79000	-	-0243
	6110055860	.45, .1, .1			45	6,9	10.	.07	79000	-	-0287
	5511171213	.45, .1, .1			1	6,9	06.	.03	80800	-	-0001
	5511171213	.45, .1, .1			14	6,9	18.	.07	80800	-	-1846
-	6606151413	.45, .1, .1			2	6,9	04.	.05	03700	-	-0016
-	6606151413	.45, .1, .1			7	6,9	10.	.06	03700	-	-0411
	118573542	.45, .1, .6	/		2	14,75	16.	.07	36400	-	0058
	118573542	.45, .1, .6			208	8	02.	.07	36400	-	-2481
	7803136693	.45, .1, .1			1	6,9	22.	.07	80600	-	-1635
	6212043795	.45, .1, .1			7	6,9	27.	.07	42700	-	-3087
	6910283067	.45, .1, .1			5	6,9	11.	.07	81000	-	-6317
	7404106683	.45, .1, .1			1	12	29.	.07	42300	-	-4726
	7404106683	.45, .1, .1			2	6,9	20.	.03	79000	-	-0107
	6507103083	.45, .1, .1			20	6,9	05.	.07	04300	-	-0050
	6105015564	.45, .1, .1			1	12	23.	.06	36400	-	-2207
	7701258446	.45, .1, .4			1	12	01.	.05	80600	-	-5445
	7701258446	.45, .1, .4			1	10	25.	.07	80600	-	-7629
	6512034393	.45, .1, .1			8	6,9	18.	.06	80900	-	-5734
	6512034393	.45, .1, .1			3	6,9	29.	.03	80900	-	-0078
	5509072375	.45, .1, .1			2	6,9	14.	.07	80500	-	-5696
	5810101228	.45, .1, .1	/		1	13	02.	.05	80800	-	-00006
	5810101228	.45, .1, .1			1849	6,4	25.	.05	80800	-	-2424
	6304040256	.45, .1, .1			3	6,9	13.	.03	92000	-	-0001
	6304040256	.45, .1, .1			29	6,9	02.	.07	92000	-	-4015
	6304040256	.45, .1, .1	/		1	14,75	03.	.06	92000	-	0021
	3511286287	.45, .1, .1			17	6,9	02.	.06	80600	-	-6164
	3511286287	.45, .1, .1			36	6,9	12.	.04	79000	-	-0169
	3511286287	.45, .1, .1			14	6,4	01.	.04	80600	-	-1614
	121749139	.45, .1, .6	/		9	14,75	30.	.05	01100	-	0019
:					8213						

/ : - ; / - ; / -
/ +

30.06.2007 .-

: 111 901/ . J.

: 2.47%

	/	.45	/ . J			
1	2	3	4	5	6	7
	118562923	.45, .1, .6		98	07.06.2007	36400 - -0018
	118562923	.45, .1, .6		103	10.02.2007	36400 - -0010

	131181471	.45, .1, .6		1	10.05.2007	80600	- -1044
	131181471	.45, .1, .6		1	08.01.2007	80600	- -0968
	131181471	.45, .1, .6		30	05.01.2007	80600	- -0969
	131181471	.45, .1, .6		4	14.02.2007	80600	- -0986
	131181471	.45, .1, .6		14	26.02.2007	80600	- -0991
	131181471	.45, .1, .6		84	26.02.2007	80600	- -0992
	131181471	.45, .1, .6		3	20.09.2006	80600	- -0871
	131181471	.45, .1, .6		1	08.12.2006	80600	- -0950
	131181471	.45, .1, .6		2	14.12.2006	80600	- -0913
	131181471	.45, .1, .6		4	20.03.2007	80600	- -1008
	131181471	.45, .1, .6		70	13.06.2007	80600	- -1061
	131181471	.45, .1, .6		21	27.06.2007	80600	- -1069
	131181471	.45, .1, .6		12	02.04.2007	80600	- -1018
	131181471	.45, .1, .6		1	20.04.2007	80600	- -1029
	131181471	.45, .1, .6		5	20.03.2007	80600	- -1009
	131181471	.45, .1, .6		2	31.07.2006	80600	- -0831
	131181471	.45, .1, .6		1	08.09.2006	80600	- -0867
	131181471	.45, .1, .6		1	08.09.2006	80600	- -0865
	131181471	.45, .1, .6		2	17.11.2006	80600	- -0939
	131181471	.45, .1, .6		1	16.08.2006	80600	- -0845
	131181471	.45, .1, .6		2	24.07.2006	80600	- -0822
	131181471	.45, .1, .6		1	08.11.2006	80600	- -0924
	131181471	.45, .1, .6		3	20.01.2006	80600	- -0669
	131181471	.45, .1, .6		257	02.04.2007	80600	- -1019
	131181471	.45, .1, .6		6	01.08.2006	80600	- -0828
	131181471	.45, .1, .6		4	23.10.2006	80600	- -0906
	131181471	.45, .1, .6		115	12.04.2007	80600	- -1023
	131181471	.45, .1, .6		5	14.07.2006	80600	- -0802
	131181471	.45, .1, .6		2	01.11.2006	80600	- -0914
	131181471	.45, .1, .6		2	15.11.2006	80600	- -0936
	103812011	.45, .1, .6		10	31.01.2006	80800	- -0063
	103812011	.45, .1, .6		1	01.02.2007	80800	- -0079
	103812011	.45, .1, .6		30	01.02.2007	80800	- -0080
	121453599	.45, .1, .6		1	24.01.2007	80600	- -0975
" "	121076907	.45, .1, .5		6	01.01.2007	80600	- -0923
" "	121076907	.45, .1, .5		1173	20.08.2003	80600	- -0262
" "	121076907	.45, .1, .5		1	01.04.2005	80600	- -0502
-	813210775	.45, .1, .6		8	29.01.2007	80800	- -0078
	831629999	.45, .1, .6		440	12.04.2007	03000	- -0001
	831629999	.45, .1, .6		103	04.09.2006	42300	- -0217
	831629999	.45, .1, .6		103	04.09.2006	42300	- -0218
	130434434	.45, .1, .6		20	17.05.2006	80600	- -0755
	130434434	.45, .1, .6		8	25.10.2006	80600	- -0907
	103324446	.45, .1, .6		3	29.01.2007	80800	- -0077
:				2765			

V.3.3.

. 114

.))
.)“ , ,
.”

“ ” , 25
 % :
) “ ”
 - 25
 “ ” . . 6148/1996 - , .
 21;
 “ ” . . 19446/1994 - ,
 “ ” 2;
 “ ” . . 12496/2005 ,
 “ ” 2;
 “ ” . . 12495/2005 ,
 “ ” 2;
) “
 “ ” . . 2655/1989 - , .
 “ ” 2 -
 “ ” . . 7152/1994 -
 “ ” 2 -
 “ ” / / , “ ” :
 - .

	“ ” , . . . 8139/2006 . , . . . ” “ ” 116	100 %
	“ ” , . . . 11749/2000 . , . . . ” “ ” 99	100 %
	“ ” , . . . 13357/2003 . , . . . ” “ ” 99	100 %
	“ ” , . . . 11748/2000 . , . . . ” “ ” 14	100 %
	“ ” , . . . 1926/2001 . , . . .	100 %
	“ ” , . . . 3167/2006 . , . . .	100 %

	” 13	
”	523/2000	100 %
”	3076/2000	100 %
”	11728/2000	100 %
”	11794/2000	100 %
”	1296/2002	100 %
”	1145/2002	100 %
”	8138/2006	100 %
”	11703/2000	100 %
”	4151/2001	100 %
”	11734/2000	100 %
”	11727/2000	100 %
”	15477/1998	87 %

	- " 99	
	" 7971/1995 " 99	80 %
	" 106/2006 " 1	77,46 %
	" 4100/1995	51 %
	" 14231/1996 " 99	50 %
	" 19582/1993 " 99	47,72 %
	" 979/2000 " 2	40 %
	" 1641/1999 " 99	39,15 %
	" 953/1996 "	38,75 %
	" 6971/2003 " 16	33 %
	" 4279/2005 "	25 %
" "	" 572/2004 " 15	100 %
" "	" 571/2004 " 15	100 %
" "	" "	

"	, . . . 12005/1999 . " 99	100 %
"	" 11760/2000 . " 99	57 %
"	" 14099/1999 . " 99	25 %

VI.2.3.

" " ,
 , ,
 ,
 :
 ■ ;
 ■ ;
 ■ ;

VII.

VI.1.

3 .
2004 ., 2005 . 2006 .
" " ,
" " 55.
30.06.2005 ., 30.06.2006 . 30.06.2007 .

VII.3.

’

■

:

“

” :

- 157 500 ;
- 320 847 ;
- 150 000 ;
- 424 944 97 177

.;

’

“

” :

- 1 293 727 .

V .4.

29.06.2007 .)

VII.5.

VII.6.

“ ”

’

“ ”

’

14-

“ ” (“ - ”)

3-

. 12, . 1,

“ ” 14

. 12, . 2

1/20

1/20

V .7.

- :
“ ” 103, : , . (+359 2) 9266290,
9.30 17.30 .
- “ ” 14, : , . (+359 2) 8166
492, 9:00 ” 17:30 .
- “ ”
“ ” 24, : , . (+359 52) 603828,
9:00 17:00 .

:

, 3 ' 2007 ., , ' ,

-
- :
1. . 81, . 5, . 81, . 3
 2. .
 3. -
 - . 30, . 1, . 3 , , .
 4. .
 5. .
 6. .
 7. "
 8. " " "
 - 29 2007 .
 9. 11 2007 .
 10. 09 2007 .
 - " "
 - 11.
 12. " "
 - 30.06.2005 ., 30.06.2006 ., 30.06.2007 .
 13. 23 2007 .
"