

# **T7 Release 12.1**

## **Functional and Interface Overview**

Version        1  
Date            11 March 2024

**© Deutsche Börse Group 2024**

This publication is for informational purposes only. None of the information in this publication constitutes investment advice and does not constitute an offer to sell or a solicitation of an offer to purchase any contract, share or other financial instrument. This publication is not intended for solicitation purposes but only for use as general information. All descriptions, examples and calculations contained in this publication are for illustrative purposes only.

Deutsche Börse AG, Frankfurter Wertpapierbörse (FWB®), the Frankfurt Stock Exchange), Eurex Frankfurt AG, Eurex Deutschland and Eurex Clearing AG do not represent that the information in this publication is comprehensive, complete or accurate and exclude liability for any consequence resulting from acting upon the contents of this or another publication, in so far as no wilful violation of obligations took place or, as the case may be, no injury to life, health or body arises or claims resulting from the Product Liability Act are affected.

Securities traded on the Frankfurt Stock Exchange and Eurex derivatives (other than EURO STOXX 50® Index Futures contracts, EURO STOXX® Select Dividend 30 Index Futures contracts, STOXX® Europe 50 Index Futures contracts, STOXX® Europe 600 Index Futures contracts, STOXX® Europe Large/Mid/Small 200 Index Futures contracts, EURO STOXX® Banks Sector Futures contracts, STOXX® Europe 600 Banks/Industrial Goods & Services/Insurance/Media/Personal & Household Goods/Travel & Leisure/Utilities Futures contracts, Dow Jones Global Titans 50 IndexSM Futures contracts, DAX® Futures contracts, MDAX® Futures contracts, TecDAX® Futures contracts, SMIM® Futures contracts, SLI Swiss Leader Index® Futures contracts, RDXxt® USD - RDX Extended Index Futures contracts, Eurex inflation/commodity/weather/property and interest rate derivatives) are currently not available for offer, sale or trading in the United States nor may they be offered, sold or traded by persons to whom US tax laws apply.

The fund shares listed in XTF Exchange Traded Funds® are admitted for trading on the Frankfurt Stock Exchange. Users of this information service who legally reside outside Germany are herewith advised that sale of the fund shares listed in XTF Exchange Traded Funds may not be permitted in their country of residence. The user makes use of the information at their own risk.

**Legal validity of this disclaimer**

In the event that individual parts of or formulations contained in this text are not, or are no longer, legally valid (either in whole or in part), the content and validity of the remaining parts of the document are not affected.

**Trademarks**

The following names and designations are registered trademarks of Deutsche Börse AG or an affiliate of Deutsche Börse Group:

1585®; A7®; Buxl®; C7®; CDAX®; CEF®; CEF alpha®; CEF ultra®; CFF®; Classic All Share®; Clearstream®; CX®; D7®; DAX®; DAXglobal®; DAXplus®; DB1 Ventures®; DBIX Deutsche Börse India Index®, Deutsche Börse®, Deutsche Börse Capital Markets Partner®; Deutsche Börse Commodities®; Deutsche Börse Venture Network®; Deutsches Eigenkapitalforum®; DivDAX®; eb.rexx®; eb.rexx Jumbo Pfandbriefe®; ERS®; eTriParty®; Eurex®; Eurex Bonds®; Eurex Clearing Prisma®; Eurex Improve®; Eurex Repo®; Euro GC®; ExServes®; EXTF®; F7®; FDAX®; FWB®; GC Pooling®; GCPI®; GEX®; Global Emission Markets Access – GEMA®; HDAX®; iNAV®; L-DAX®; L-MDAX®; L-SDAX®; L-TecDAX®; M7®; MDAX®; N7®; ODAX®; ÖkoDAX®; PROPRI®; REX®; RX REIT Index®; SCHATZ-FUTURE®; SDAX®; ShortDAX®; StatistiX®; T7®; TecDAX®; Technology All Share®; TRICE®; USD GC Pooling®; VDAX®; VDAX-NEW®; Vestima®; Xscreen®, Xemac®, Xentric®, Xetra®, Xetra-Gold®, Xpect®, Xpider®, XTF®, XTF Exchange Traded Funds®, We make markets work®

The names and trademarks listed above do not represent a complete list and, as well as all other trademarks and protected rights mentioned in this publication, are subject unreservedly to the applicable trademark law in each case and are not permitted to be used without the express permission of the registered owner. The simple fact that this publication mentions them does not imply that trademarks are not protected by the rights of third parties.

The STOXX® indices, the data included therein and the trademarks used in the index names are the intellectual property of STOXX Ltd., Zug, Switzerland and/or its licensors. Eurex' derivatives based on the STOXX indices are in no way sponsored, endorsed, sold or promoted by STOXX and its licensors and neither STOXX nor its licensors shall have any liability with respect thereto.

STOXX iSTUDIO® is a registered trademark of STOXX Ltd., Zug, Switzerland.

TRADEGATE® is a registered trademark of Tradegate AG Wertpapierhandelsbank.

EEX® is a registered trademark of European Energy Exchange AG.

Flexible is better.® is a registered trademark of Axioma, Inc.

## Table of Contents

|          |  |           |
|----------|--|-----------|
| <b>1</b> | <b>Introduction</b>                                    | <b>5</b>  |
| 1.1      | Purpose of this document                               | 5         |
| 1.2      | Further reading  | 5         |
| 1.3      | Definitions and Abbreviations                          | 6         |
| <b>2</b> | <b>Main Components</b>                                 | <b>8</b>  |
| 2.1      | Markets, Products and Instruments                      | 8         |
| 2.2      | Instrument Types                                       | 8         |
| 2.3      | Trading States   | 11        |
| 2.3.1    | Product States   | 11        |
| 2.3.2    | Instrument States                                      | 12        |
| 2.3.3    | Fast Market  | 15        |
| 2.3.4    | Market Conditions                                      | 15        |
| 2.3.5    | TES Activity Product Status                            | 15        |
| 2.3.6    | On-book and TES (Off-book) Instrument Status           | 16        |
| 2.4      | Participant, User Concept & Entitlement                | 18        |
| 2.4.1    | User Concept   | 19        |
| 2.4.2    | Entitlement  | 19        |
| <b>3</b> | <b>On-book Functionality</b>                           | <b>23</b> |
| 3.1      | Orders   | 23        |
| 3.2      | Quotes   | 26        |
| 3.3      | Trading Models & Matching                              | 27        |
| 3.3.1    | Allocation schemes                                     | 27        |
| 3.3.2    | Synthetic matching                                     | 28        |
| 3.4      | Eurex Improve  | 28        |
| 3.5      | Eurex automated Cross- and Pre-Arranged Trade facility | 28        |
| 3.6      | Xetra Retail Execution service                         | 29        |
| 3.7      | Trade Traceability                                     | 29        |
| 3.8      | Clearing and Settlement                                | 29        |
| <b>4</b> | <b>TES (Off-book) Functionality</b>                    | <b>30</b> |
| 4.1      | TES Types and TES Type Eligibility                     | 30        |
| 4.2      | TES Profiles   | 31        |
| 4.3      | TES activities   | 32        |
| 4.4      | Clearing and Settlement                                | 33        |
| <b>5</b> | <b>Eurex EnLight</b>                                   | <b>34</b> |
| 5.1      | Overview   | 34        |
| 5.2      | The Workflow in Eurex EnLight                          | 34        |
| 5.2.1    | Negotiation Event Workflow                             | 34        |
| 5.2.2    | Deal Workflow  | 35        |

|   |           |
|---|-----------|
| <b>6 Xetra EnLight</b>  | <b>36</b> |
| 6.1 Overview  | 36        |
| 6.2 Process Workflow in Xetra EnLight                                       | 36        |
| <b>7 Risk Protection and Safeguards</b>                                     | <b>37</b> |
| <b>8 Interfaces</b>   | <b>39</b> |
| 8.1 Trading Interfaces  | 42        |
| 8.1.1 The Enhanced Trading Interface  | 42        |
| 8.1.2 The T7 FIX LF Interface   | 44        |
| 8.2 The Market Data Interfaces  | 45        |
| 8.2.1 Market Data Interface (MDI) and Enhanced Market Data Interface (EMDI) | 45        |
| 8.2.2 Enhanced Order Book Interface   | 45        |
| 8.2.3 Extended Market Data Service  | 46        |
| 8.3 Reference Data  | 47        |
| 8.3.1 Reference Data Interface (RDI)  | 47        |
| 8.3.2 Reference Data File (RDF)   | 47        |
| 8.3.3 Cash-specific reference data files                                    | 47        |
| 8.3.4 Reference Data in the market data interfaces                          | 47        |
| 8.4 Graphical User Interfaces   | 48        |
| 8.5 Reports   | 49        |
| <b>9 Change log</b>   | <b>50</b> |

# 1 Introduction

T7 is a state-of-the-art trading architecture developed by Deutsche Börse Group. T7 offers high performance together with reliable connectivity, enriched trading functionality, as well as a faster time-to-market. The T7 trading architecture is used to operate the derivatives markets as well as the cash markets.

This document provides an overview of the T7 trading architecture's functionality with all its interfaces. Please refer to the "Functional Reference" for extensive information.

## 1.1 Purpose of this document

This document describes the main capabilities of T7's trading architecture used for both the cash and derivatives markets. The following reflects the main functionalities:

- Concept of multiple markets, products and instruments (incl. states)
- Concept of participant, business unit and user set-up
- Overview of on-book functionality
- Overview of off-book functionality (T7 Entry Service, Eurex EnLight, Xetra EnLight, Baskets)
- Overview of interfaces for trading and market data, respectively reference data

## 1.2 Further reading

The following documents provide additional information:

| Overview and Functionality   |
|--|
| <ul style="list-style-type: none"> <li>• T7 Functional and Technical Release Notes for Eurex (Final).</li> <li>• T7 Functional and Technical Release Notes for Cash Market (Final).</li> <li>• T7 Functional Reference.</li> <li>• T7 Participant and User Maintenance Manual, for Derivatives Markets.</li> <li>• T7 Participant and User Maintenance Manual, for Cash Markets.</li> <li>• Market Model Continuous Trading in connection with Auctions.</li> <li>• Market Model Continuous Auction.</li> </ul>  |
| Interfaces   |
| <ul style="list-style-type: none"> <li>• T7 Trading + Admin GUI &amp; Clearer GUI - User Manual, for Derivatives Markets.</li> <li>• T7 Trading + Admin GUI &amp; Clearer GUI - User Manual, for Cash Markets.</li> <li>• T7 Market and Reference Data Interfaces Manual.</li> <li>• T7 Enhanced Order Book Interfaces Manual.</li> <li>• T7 Enhanced Trading Interface (ETI) – Derivatives Message Reference.</li> <li>• T7 Enhanced Trading Interface (ETI) – Cash Message Reference.</li> <li>• T7 FIX LF Interface– Derivatives Message Reference.</li> <li>• T7 FIX LF Interface – Cash Message Reference.</li> </ul> |
| Reports  |
| <ul style="list-style-type: none"> <li>• T7 XML Report Reference Manual.</li> <li>• Common Report and Upload Engine User Guide.</li> </ul>   |

Table 1: Further Reading T7 Release 12.1

All the documents are available on the websites of Deutsche Börse Group:

#### Derivatives Markets:

[www.eurex.com](http://www.eurex.com)

> Support > Initiatives & Releases > T7 Release 12.1 > System Documentation

#### Cash Markets:

[www.xetra.com](http://www.xetra.com)

> Technology > T7 Trading Architecture > System Documentation > Release 12.1

<https://membersection.deutsche-boerse.com>

> Cash *Member section*

### 1.3 Definitions and Abbreviations

The following are the definitions and abbreviations used in the Functional and Interface Overview:

| Abbreviation or Term         | Definition   |
|------------------------------|--|
| <b>BF</b>                    | Börse Frankfurt  |
| <b>BFZ</b>                   | Börse Frankfurt Zertifikate  |
| <b>BU</b>                    | Business Unit  |
| <b>CCP</b>                   | Central Counter Party  |
| <b>CM</b>                    | Clearing Member, i.e. a participant with a specific Clearing Business Unit |
| <b>DBAG</b>                  | Deutsche Börse AG  |
| <b>DC market participant</b> | Direct client; formerly known as non-clearing member NCM                   |
| <b>ECAG</b>                  | Eurex Clearing AG  |
| <b>EEX</b>                   | European Energy Exchange   |
| <b>EMDI</b>                  | T7 Enhanced price level aggregated Market Data Interface                   |
| <b>EMDS</b>                  | T7 Extended Market Data Service  |
| <b>EOBI</b>                  | T7 Enhanced Order Book Market Data Interface                               |
| <b>ETC</b>                   | Exchange Traded Commodity  |
| <b>ETF</b>                   | Exchange Traded Fund   |
| <b>ETI</b>                   | Enhanced Trading Interface   |
| <b>ETN</b>                   | Exchange Traded Note   |
| <b>Eurex EnLight</b>         | A selective request for quote service, to negotiate off-book transactions  |
| <b>FIX</b>                   | Financial Information eXchange (Protocol)                                  |
| <b>GUI</b>                   | Graphical User Interface   |
| <b>IPS</b>                   | Inter-product Spread   |

| Abbreviation or Term | Definition  |
|----------------------|---|
| <b>LP</b>            | Liquidity Provider  |
| <b>MDI</b>           | T7 netted price level aggregated Market Data Interface                    |
| <b>Nodal</b>         | Nodal Exchange  |
| <b>Off-book</b>      | Refers to trading functionality not involving the central order book      |
| <b>On-book</b>       | Refers to trading functionality of the central order book                 |
| <b>PAG</b>           | Product Assignment Group  |
| <b>PLP</b>           | Passive Liquidity Protection  |
| <b>PWT</b>           | Price without turnover, e.g. PWT quote                                    |
| <b>RDF</b>           | Reference Data File   |
| <b>RDI</b>           | Reference Data Interface  |
| <b>RDS</b>           | Reference Data System   |
| <b>RfQ</b>           | Request for Quote   |
| <b>SI</b>            | Settlement Institution  |
| <b>SMP</b>           | Self-match Prevention   |
| <b>SRQS</b>          | Selective Request for Quote Service; see Eurex EnLight / Xetra EnLight    |
| <b>T7</b>            | Cash & Derivatives trading system developed by Deutsche Börse Group       |
| <b>TES</b>           | T7 Entry Service  |
| <b>WBAG</b>          | Wiener Börse AG   |
| <b>Xetra</b>         | Frankfurt Stock Exchange's trading venue Xetra on T7                      |
| <b>Xetra EnLight</b> | A selective request for quote service, to negotiate off-book transactions |

## 2 Main Components

The following chapter describes the main components of the T7 trading architecture.

### 2.1 Markets, Products and Instruments

The T7 trading architecture provides the capability to operate multiple markets (such as Eurex, Xetra, EEX) on one technical instance. The following figure shows the T7 market hierarchy with its markets, product assignment groups, products and instruments:

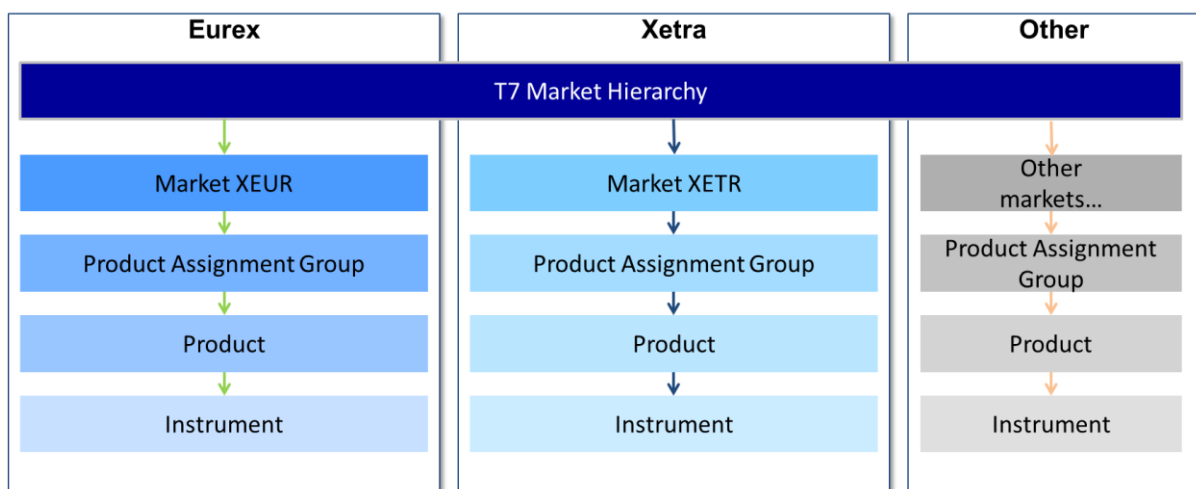


Figure 1: T7 Market Hierarchy

Instruments in T7 are the tradeable entities, i.e. an order refers to buying or selling a specified quantity of a certain instrument. Instruments of the same type are grouped to form products. However, every instrument must belong to a product. The product itself is associated to a product assignment group. For instance, the product assignment group “German Interest Rate Futures & Options” contains the Eurex products FGBL, FGBM, FGBS, FGBX, OGBL, OGBM, and OGBS. A simple instrument would be FGBL DEC 2018.

The product assignment group is used for Entitlement except in Börse Frankfurt. Please refer to section 2.4.2 for more details. Each product assignment group refers to a specific market.

Please note, that a product may contain only one instrument (relation 1:1). For example, the product assignment group DAX1 comprises all DAX products such as ADS, ALV, BASF, BMW etc. In turn, the product ADS includes the simple instrument ADS. – In Börse Frankfurt, a product may contain tens of thousands of instruments.

A product and its instruments always belong to a single market.

### 2.2 Instrument Types

This section introduces instrument types in T7. In general, it is distinguished between three instrument types referred to as “**Simple Instrument**”, “**Complex Instrument**” and “**Flexible Instrument**”.



The following figure represents an overview for the cash and derivatives markets:

|                      | Derivatives Market  | Cash Market  |
|----------------------|---|--|
| Simple Instruments   | Futures Contracts<br>Option Series  | Equities, Exchange Traded Funds,<br>Exchange Traded Commodities,<br>Exchange Traded Notes, Money<br>Market Funds, Investment Funds,<br>Bonds, Warrants, Subscription<br>Rights, Covers |
| Complex Instruments  | Futures Spreads<br>Standard Futures Strategies<br>Packs and Bundles<br>Strips<br>Commodity Strips<br>Inter-Product Spreads<br>Standard Options Strategies<br>Non-Standard Options Strategies<br>Options Volatility Strategies<br>Non-Standard OVS | -  |
| Flexible Instruments | Flexible Futures, Flexible Options  | -  |

Figure 2: Instrument Types on T7

The cash markets use only simple instruments (e.g. equities, ETFs, ETCs, ETNs).

Instrument Covers (“Hüllen”) can be listed by Issuers on T7 as intraday or long-term covers. Cover instruments are supported only for cash markets in the trading model *Continuous Auction with Specialist* resp. *with Market Maker*. Covers become tradeable only and immediately upon the activation by the issuer, who can update certain instrument attributes with the activation. An activated cover will never be reverted to a cover.

Simple instruments in the derivatives markets can be individual futures contracts or options series.

Scaled instruments in derivatives markets are simple or complex instruments with a round-lot condition.

Complex instruments enable trading of two or more simple instruments simultaneously.

Flexible instruments are tailor-made futures or options contracts. They can be traded only off-book via T7 Entry Services.

The following table defines the supported complex instrument types:

| Complex Instrument Type                         | Description   |
|---|---|
| Futures Spread                                  | Calendar spread combinations for futures.   |
| Packs and Bundles                               | Futures strategies containing consecutive quarterly maturities.   |
| Strip   | Futures strategy similar to packs and bundles with 2 - 20 legs.   |
| Commodity Strip                                 | Focused on the trading of commodity products such as power futures.   |
| Standard Futures Strategy                       | Analogous to Standard Options Strategy. Currently, T7 supports two Standard Futures Strategies: Futures Butterfly and Futures Condor.                       |
| Inter-Product Spread (IPS)                      | Combination of contracts of different futures products of the same market.  |
| Standard Options Strategy (SOS)                 | Strategies with up to four legs which conform to standard rules (e.g. Bull, Bear, Straddle).  |
| Non-Standard Options Strategy (NOS)             | Any combination of simple options instruments, not covered by a Standard Options Strategy, with up to six legs.   |
| Standard Options Volatility Strategy (OVS)      | Volatility strategies with up to six legs plus underlying (e.g. Call vs. Underlying, Put vs. Underlying, Bull vs. Underlying).                              |
| Non-Standard Options Volatility Strategy (NOVS) | Similar to Options Volatility Strategies, but more flexible by allowing a non-standard Options Strategy which is not covered by a strategy template of OVS. |

Table 2: Complex Instrument Types

Usually complex instruments are requested by traders. However, some futures spreads, packs and bundles and inter-product spreads are created by the exchange.

## 2.3 Trading States

This section provides an overview of the trading states supported by T7. Overall, T7 supports two trading states, i.e. the “**product state**” and the “**instrument state**” which are explained in the following sections.

### 2.3.1 Product States

With the help of the product state, the business day is structured in a timely manner and the overall access to the trading system is controlled on product level. The following table represents typical product states for a common trading day:

| Product State | Description   |
|---------------|---|
| Start of Day  | <ul style="list-style-type: none"> <li>➤ Represents the time in the morning before activity begins.</li> <li>➤ Participants have no functional access to the trading system.</li> </ul>   |
| Pre-Trading   | <ul style="list-style-type: none"> <li>➤ Represents the phase before trading starts providing traders the possibility to prepare themselves for trading in terms of order maintenance (without execution).</li> </ul>   |
| Trading       | <ul style="list-style-type: none"> <li>➤ Represents the trading phase during the day where order execution is possible and market data is available.</li> <li>➤ Different trading models as well as auction call and freeze phases are supported.</li> </ul>  |
| Closing       | <ul style="list-style-type: none"> <li>➤ Phase between Trading and Post-Trading phase which covers the time between the end of regular trading and the end of the closing auction, or the end of the Trade-at-Close phase (cash markets only).</li> <li>➤ For products that have no closing auction at the end of the trading phase, the product state Closing has normally a zero duration.</li> </ul> |
| Post-Trading  | <ul style="list-style-type: none"> <li>➤ State in the evening after trading has ended. It is typically a time where traders can maintain their orders in preparation for the next trading day (no execution).</li> </ul>  |
| End of Day    | <ul style="list-style-type: none"> <li>➤ Phase in the evening reserved for the end-of-day processing by the exchange.</li> <li>➤ Participants have no access to the trading system anymore.</li> </ul>  |

Table 3: Overview of Product States

Additionally, T7 supports two other product states for specific situations:

| Product State | Description   |
|---------------|---|
| Halt          | <ul style="list-style-type: none"> <li>➤ The exchange may halt a product if it deems that market conditions or technical conditions require this. In this product state, no trading occurs and access to the order book is restricted.</li> </ul>                             |
| Holiday       | <ul style="list-style-type: none"> <li>➤ This product state applies to products that are not open for trading on that day, even though the exchange is open. Participants have no access to the trading system for a product that is in the product state Holiday.</li> </ul> |

Table 4: Special Product States

### **2.3.2 Instrument States**

The instrument state refers to the individual state of the instrument and controls the trade activity in the order book as well as the market data distribution. The following figure shows the typical sequence of instrument states in the normal continuous trading model. However, T7 supports also other trading models/ forms as used for the cash markets. See e.g. the One Auction trading model as displayed in the figure.

Please refer to the Market Model documents as mentioned in 1.2 *Further Reading* for more information regarding trading models / trading forms in the cash markets.

See figure on next page.

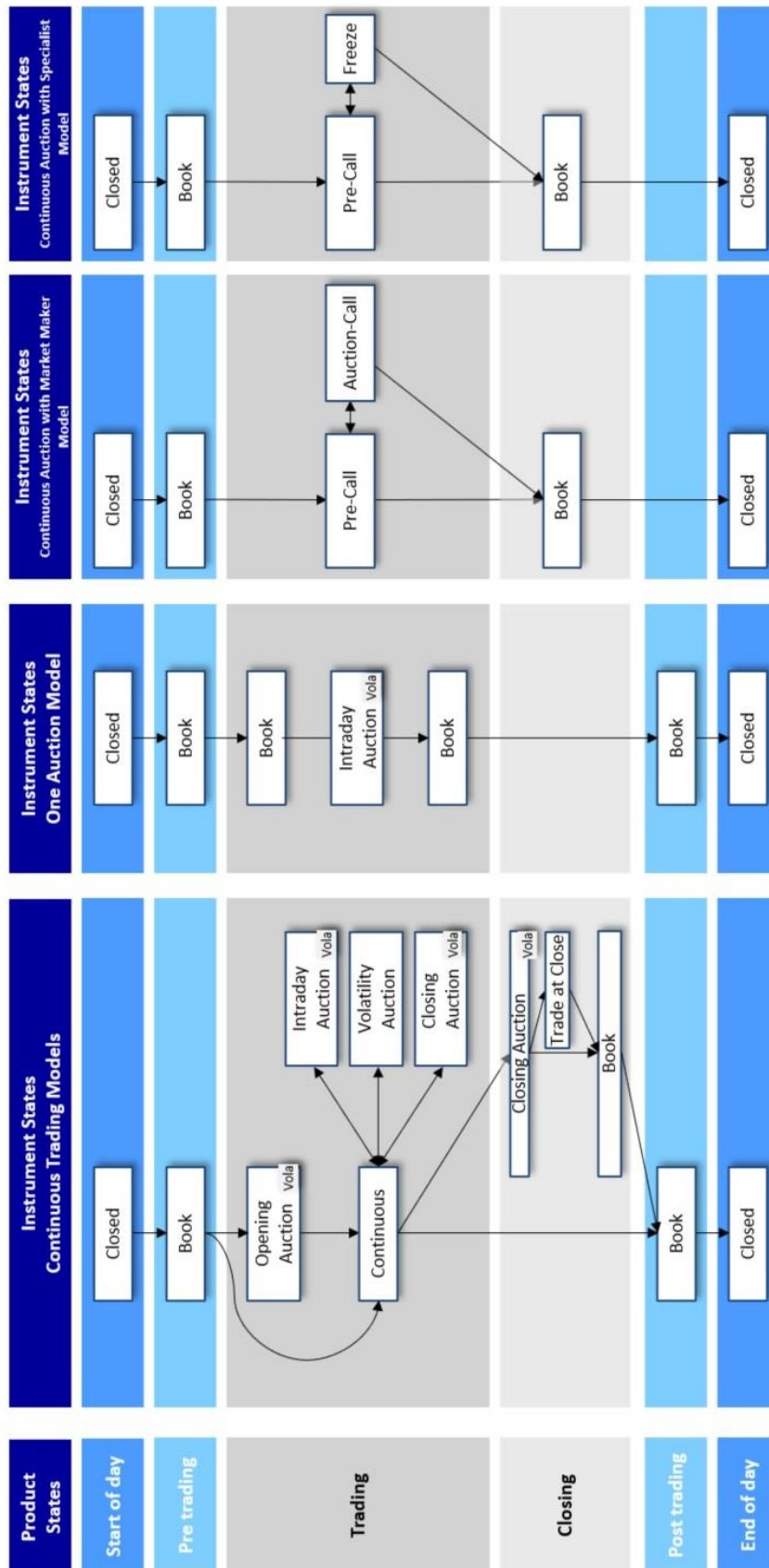


Figure 3: Typical Product and Instrument States

The table below describes the instrument states referred above:

| Instrument State                   | Description  |
|------------------------------------|--|
| Closed                             | No access to the order book, no executions and no data distribution.   |
| Book                               | Order/ quote maintenance is possible but no executions and no data distribution.   |
| Continuous                         | Order/ quote maintenance as well as continuous matching of orders and quotes are possible. Trade data is published by the exchange.  |
| Pre-Call                           | The instrument state Pre-Call serves as preliminary phase in the run-up to auction phases in <i>Continuous Auction</i> trading models. In <i>Continuous Auction with Market Maker</i> trading model, immediate matching is possible in Pre-Call within the limits of the Liquidity Provider's quote.   |
| Opening/ Intraday/ Closing Auction | Order/ quote maintenance are possible but no executions. Only top of the book is published (either best bid/ ask or the potential auction price). It is possible that within an opening/ intraday or a closing auction, a volatility auction is triggered if the auction price is outside a predefined price range.<br>A special case of an auction is Auction-Call in the trading model <i>Continuous Auction with Market Maker</i> . |
| Trade-at-Close                     | The instrument phase Trade-at-Close is as a potential continuous trading phase following a closing auction with successful price determination and positive turnover in the trading model <i>Continuous Trading with Auctions</i> . Matching is possible only at the fixed closing auction price. Trades executed during the Trade-at-Close phase are flagged accordingly.   |

Table 5: Time Triggered Instrument States

Further instrument states may occur throughout the trading day, which are event triggered:

| Instrument State   | Description   |
|--------------------|---|
| Volatility Auction | Order/ quote maintenance are possible but no executions. Only top of the book is published (either best bid/ ask or the potential auction price). Volatility auctions occur if the potential execution price is outside a predefined price range. |
| Restricted         | Only deletions are possible (no order/ quote maintenance, no executions, no data distribution). In certain markets, instruments enter the state Restricted when the product is set to Halt.   |

| Instrument State | Description  |
|------------------|--|
| Freeze           | <p>No order/ quote maintenance and no executions are possible. Deletions are marked as 'pending'. Top of the order book is published (either best bid/ ask or the potential auction price). After freeze, potentially resulting trade is published.</p> <p>This state is used by the exchange to check the order book specifically. For the cash markets, this state occurs typically at the end of an extended volatility interruption.</p> <p>A special case is the Freeze phase in trading model <i>Continuous Auction with Specialist</i> by which the Specialist arranges matching and price determination. Here, no market data is published, and matching-relevant order enter, modify, delete requests do not enter the order book but are kept in Locked Stock until the end of Freeze.</p> |

Table 6: Event triggered Instrument States

### 2.3.3 Fast Market

A Fast Market is declared by an exchange when a volatile market situation is expected. During this time, certain price controls are relaxed, e.g. minimum quote spread requirements.

In T7, Fast Market is a special status of the product that the exchange can set independently of the product and instrument states. This allows for example, a product to be set to Fast Market early in the morning before trading starts, without any impact on the sequence and timing of the product states.

### 2.3.4 Market Conditions

The regulatory relevant states of market conditions for market making are Normal Market Conditions, Stressed Market Conditions and Exceptional Circumstances. T7 publishes using the market data interfaces the Normal and Stressed Market Conditions. The Exceptional Circumstances are published only via news messages.

### 2.3.5 TES Activity Product Status

T7 applies trading status at both the product and instrument level. The TES activity status for a product determines which TES activities are allowed in the product. Please note that the product status for TES is independent of the product status for on-book trading. For a given product, the following values for the TES activity status are foreseen:

- **On** – When the TES activity status is “On” for a product then TES trade entry, TES trade modification, TES trade deletion and TES trade approval are allowed for all the instruments of the corresponding product.
- **Ended** – The TES activity status “Ended” terminates the TES trading session of a business day. All the pending TES trades (pending entries/ modifications/ deletions) are deleted during transition to the TES activity status “Ended”. TES trade entry/ modification/ approval and deletion are not allowed.
- **Off** – The TES activity status “Off” indicates that the product is no longer available for TES trading or TES trading has not been started for the day. In this case, all TES activities are disabled for the product.

- **Halted** – The TES activity status “Halted” is reserved for emergency situations. The exchange may set the TES activity status to “Halted” for a product if they judge that market conditions or technical conditions impair the integrity of the market. In this state TES trade, entry/ modification/ approval and deletion are not allowed. Pending TES trades remain when the TES activity status is “Halted”.

| Product States | TES Activity Status |
|----------------|---------------------|
| Start of Day   | OFF                 |
| Pre Trading    |                     |
| Trading        | ON                  |
| Closing        |                     |
| Post Trading   |                     |
| End of Day     | Ended               |
|                | OFF                 |

Figure 4: TES Activity Status

### 2.3.6 On-book and TES (Off-book) Instrument Status

In T7, the instrument *status* is different from the instrument *state*. The instrument status controls in principle if the instrument is available for trading or not. Thereby, it is distinguished between the instrument status for on-book and off-book trading, i.e. *TES* trading. Both can be determined separately, i.e. an instrument can be deactivated for on-book but not for *TES* trading.

The following instrument status are available in T7:

| Instrument Status                 | Description  |
|-----------------------------------|--|
| Active                            | The instrument status of an instrument to allow trading.   |
| Inactive                          | The exchange may decide to deactivate an instrument during the day. Trading is deactivated at all.   |
| Expired<br>(for derivatives only) | Instruments that expire during the trading day, rather than at the end of the trading day ( <i>Intraday Expiry</i> ) will upon expiration acquire the listing status ‘Expired’ as opposed to ‘Active’. Trading is not possible anymore; the instrument state is changed to ‘Restricted’. |
| Delisted<br>(for cash only)       | Instruments with last trading date in the past; pending deletion. Trading is not possible anymore; the instrument state is changed to ‘Restricted’ resp. to ‘Closed’.  |



| Instrument Status | Description  |
|-------------------|--|
| Suspended         | The exchange may suspend an instrument under unusual circumstances, or on “Knock-out-Locked”. A suspended instrument will acquire the listing status ‘Suspended’ as opposed to Active. Trading is not possible anymore; the instrument state is changed to ‘Restricted’. |

Table 7: Instrument Status

## 2.4 Participant, User Concept & Entitlement

The participant structure in T7 consists of three hierarchal levels: The **Participant** on the first level, the **Business Unit** on the second level, and the **User** as well as the **Session** on the third level.

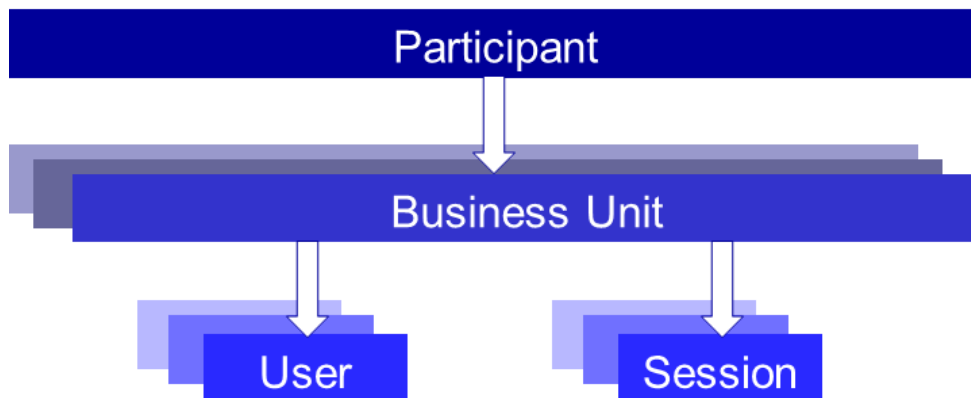


Figure 5: Participant hierarchy in T7

Definitions for the participant hierarchy:

- **Participant:** The Participant is the highest-level entity in the participant structure of T7. It is the participant legal firm and can be an trading participant, a clearing member, or a service provider.
- **Business Unit:** A participant may have several business units working independently. There is distinguished between two types of business units:
  - **A Trading Business Unit** - used by trading participants for trading only.
  - **A Clearing Business Unit** - used by clearing members to receive trade confirmations from its own trading business units and from the trading business units of their related Direct Clearing participants.  
*Only for the cash markets:* Users can make use of the Clearing Member Stop functionality.  
*Only for derivatives markets:* For risk control purposes Pre-Trade Limits and Pre-Trade Limits View are available. Transaction Size Limits may be defined for Direct Clearing participants.

Each trading participant initially has just one trading business unit and each clearing member has just one clearing business unit. Participants providing both trading and clearing will get both a trading and a clearing business unit.

- **User(s):** A business unit can have multiple users. A user can be a trading user and/or an administrator.
- **Session(s):** Sessions are permanently registered connection channels to T7. A session is set up for and belongs to exactly one business unit. In order to send requests to the trading system, a user must use a session that is connected to T7 and that belongs to the same business unit as the user. Besides that, there is no further relationship between users and sessions, i.e. a user does not belong to a specific session and a session does not belong to a specific user. As long as the session belongs to the same business unit, users can use different sessions simultaneously.

### 2.4.1 User Concept

There are three user levels: **Trader**, **Head Trader** and **Supervisor**.

- **Traders** can enter/ modify/ delete their orders only.
- **Head Traders** are allowed to do following activity on-behalf of the traders in the same trader group.
  - modify and delete orders.
  - approve and delete pending TES trades
  - all the activity on Eurex EnLight or Xetra EnLight except entering the RfQ.
- **Supervisors** can do following activity on-behalf of the traders in the same business unit
  - modify and delete orders.
  - approve and delete pending TES trades
  - all the activities on Eurex EnLight or Xetra EnLight except entering the RfQ.

Quote ownership does not depend on the trader group, please refer to section 3.2 (Quotes).

With T7, users are configured by the participant for trading via the Admin GUI and for Clearing via the Clearing GUI. Users have to be registered via the *Member Section* and trading users must be activated by the exchange.

### 2.4.2 Entitlement

The entitlement in T7 consists of a concept of roles, in combination with product assignment groups or a market. The roles enable the participant to manage user resources more easily. For example, a trader role is enriched by all resources enabling the user to trade (e.g. enter order request, modify order request, etc.). Another example is the role of the "Service Administrator" enabling the user maintenance.

The roles are assigned to the (trading/ clearing) business units by the exchange. From here, the business unit can inherit the entitlement to its users. It is possible that a user has more than one role, some effective marketwide and some per product assignment group. The following figure represents an overview of the entitlement:

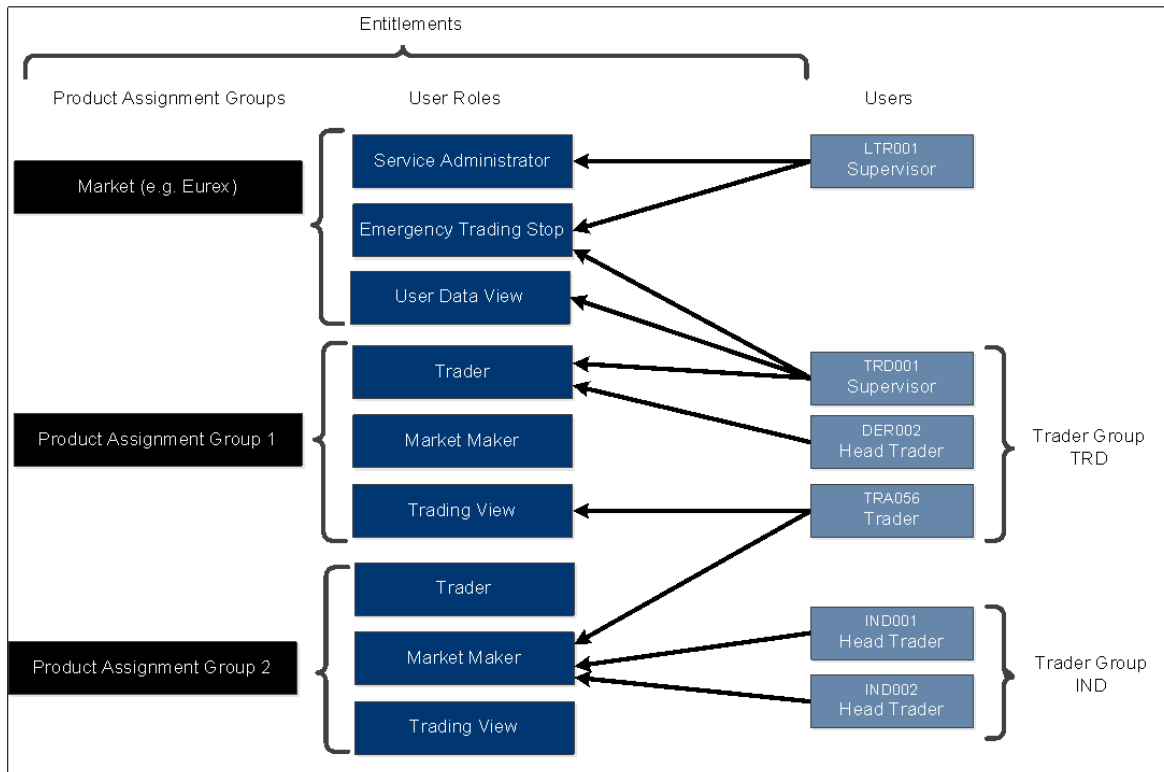


Figure 6: User Entitlement Overview

Thus, it is possible that a user having the “Trading View” role (i.e. only allowing to see trading information) in one product assignment group can act as Market Maker in another product assignment group.

The following overview provides an insight to all available roles in T7<sup>1</sup>:

| Roles  | Relevant for <sup>2</sup> |     |     |     | Description  |
|--|---------------------------|-----|-----|-----|--|
|  | TBU                       | CBU | MKT | PAG |  |
| Service Administrator<br>(derivatives markets only)  | x                         |     | x   |     | Set up new users, maintain their entitlement as well as delete users, maintain TSLs for users. |
| User Data View<br>(derivatives markets only)         | x                         | x   | x   |     | Allows viewing of own user data information and of other users.                                |
| User Data View w/o PIN<br>(derivatives markets only) | x                         |     | x   |     | Allows viewing of own user data information and of other users, but no PIN view.               |
| Trader<br>(derivatives markets only)                 | x                         |     |     | x   | Enables trading, e.g. enter orders.  |
| Cash Trader<br>(cash markets only)                   | x                         |     | ◇   | x   | Enables trading, e.g. enter orders.  |

<sup>1</sup> For further details, please refer to the *T7 Participant and User Maintenance Manual Derivatives* respectively *Cash Markets*.

<sup>2</sup> TBU = Trading Business Unit, CBU = Clearing Business Unit, MKT = Market, PAG = Product Assignment Group.

| Roles   | Relevant for <sup>2</sup> |     |     |     | Description  |
|---|---------------------------|-----|-----|-----|--|
|   | TBU                       | CBU | MKT | PAG |  |
| Cash Specialist<br>(cash markets only)                | x                         |     | x   |     | Enables acting as Specialist, i.e. to do quote maintenance, and to enter, modify resp. delete orders for other business units' users on behalf.  |
| Trading View<br>(derivatives markets only)            | x                         |     |     | x   | Allows viewing own trades and orders, e.g. to inquire them.  |
| Trading View<br>(cash markets only)                   | x                         |     | ◇   | x   | Allows viewing own trades and orders, e.g. to inquire them.  |
| TM Trade Overview                                     | x                         |     | x   |     | Allows viewing own trades, market view and OTSS, but no orders.  |
| Market Maker Protection<br>(derivatives markets only) | x                         |     |     | x   | Allows to maintain Market Maker protection parameters and to delete quotes automatically if predefined parameters are exceeded, as a part of risk control.   |
| Market Maker<br>(derivatives markets only)            | x                         |     |     | x   | Enables Market Maker activities, e.g. enter quotes.  |
| Cash Market Maker<br>(cash markets only)              | x                         |     |     | x   | Enables Market Maker activities, e.g. enter quotes.  |
| Cash Liquidity Provider<br>(cash markets only)        | x                         |     |     | x   | Enables Issuer the usage of Knockout functionality. The role is used for <i>Continuous Auction with Specialist</i> and <i>with Market Maker</i> .  |
| Emergency Mass Deletion                               | x                         |     | x   |     | Allows deleting all open orders and quotes.  |
| Emergency Trading Stop                                | x                         |     | x   |     | Allows stopping the entire trading business unit in case of emergency. All open orders/ quotes are deleted.  |
| Clearing Member Stop<br>(cash markets only)           |                           | x   | x   |     | Allows users of clearing members to stop one or many of their related trading business units.  |
| CM Backoffice View                                    |                           | x   | x   |     | Allows inquiring of trades of their related trading business units.  |
| Trade Enrichment Rule                                 | x                         |     | x   |     | Enables to view and maintain trade enrichment rules. This feature is used for automatic enrichment of executed orders and quotes that use the short order message layout. TES trades are not affected. |
| Trade Enrichment Rule View                            | x                         |     | x   |     | Enables to view all trade enrichment rules without update capability.  |
| Pre-trade Limits                                      | x                         |     | x   |     | Enabling to view and maintain pre-trade limits for on-book trading, i.e. without impact on off-book TES trades.  |
| Pre-trade Limits View                                 | x                         |     | x   |     | Enabling to view all pre-trade limits without update capability.   |

| Roles  | Relevant for <sup>2</sup> |     |     |     | Description  |
|--|---------------------------|-----|-----|-----|--|
|  | TBU                       | CBU | MKT | PAG |  |
| TES Trader   | x                         |     | ◇   | x   | Allows to enter, modify and to delete a TES trade as well as to approve the own TES side.<br>Enable trader to use Eurex / Xetra EnLight.   |
| TES Broker   | x                         |     | ◇   | x   | Allows to enter, modify and delete a TES trade but not to approve a TES trade as a TES Broker is not involved as a counter party.<br>Enable trader to use Eurex / Xetra EnLight. |
| TES View   | x                         |     | ◇   | x   | Allows viewing TES trades.   |
| Cash Service Administrator<br>(cash markets only)          | x                         |     | x   |     | Set up new users, maintain their entitlement as well as delete users. Maintain TES Auto Approval rule.   |
| Cash User Data View<br>(cash markets only)                 | x                         |     | x   |     | Allows viewing of own user data information and of other users. View TES Auto Approval rule.   |
| CM Pre-Trade Risk Maintenance                              |                           | x   | x   |     | Enables a user to maintain and view all Risk Control parameters set for all Trading business units related to the Clearer.   |
| CM Pre-Trade Risk View                                     |                           | x   | x   |     | Enables a user to view all Risk Control parameters set for all Trading business units related to the Clearer, but without update capability.                                     |
| CM Service Administrator<br>(derivatives markets only)     |                           | x   | x   |     | Set up new users, maintain their entitlement as well as delete users, maintain TSLs for NCMs   |
| EEX Service Administrator<br>(derivatives markets only)    | x                         |     | x   |     | View users and their entitlement, maintain TSLs for users.   |
| EEX CM Service Administrator<br>(derivatives markets only) |                           | x   | x   |     | View users and their entitlement, maintain TSLs for NCMs.  |

Table 8: Overview of Roles Functionality

◇ = For cash market Börse Frankfurt, the relevance is on Market, not on Product Assignment Group.

### 3 On-book Functionality

This section describes the on-book functionality for the cash and the derivatives markets provided on T7.

#### 3.1 Orders

T7 supports multiple types of orders to fulfill customer needs and expectations. All orders entered are anonymous, i.e. the business units do not receive any information on who entered an order.

Depending on the market and the traded instrument, the allowed combinations of order types, restrictions, price conditions and validities may differ. These combinations determine the exchange within an order profile disclosed to the customers in the reference data.

Nevertheless, there are two attributes which are mandatory and valid for all orders: the order persistency and if it is standard or a lean order. The following figure depicts the differences as well as the combination possibilities.

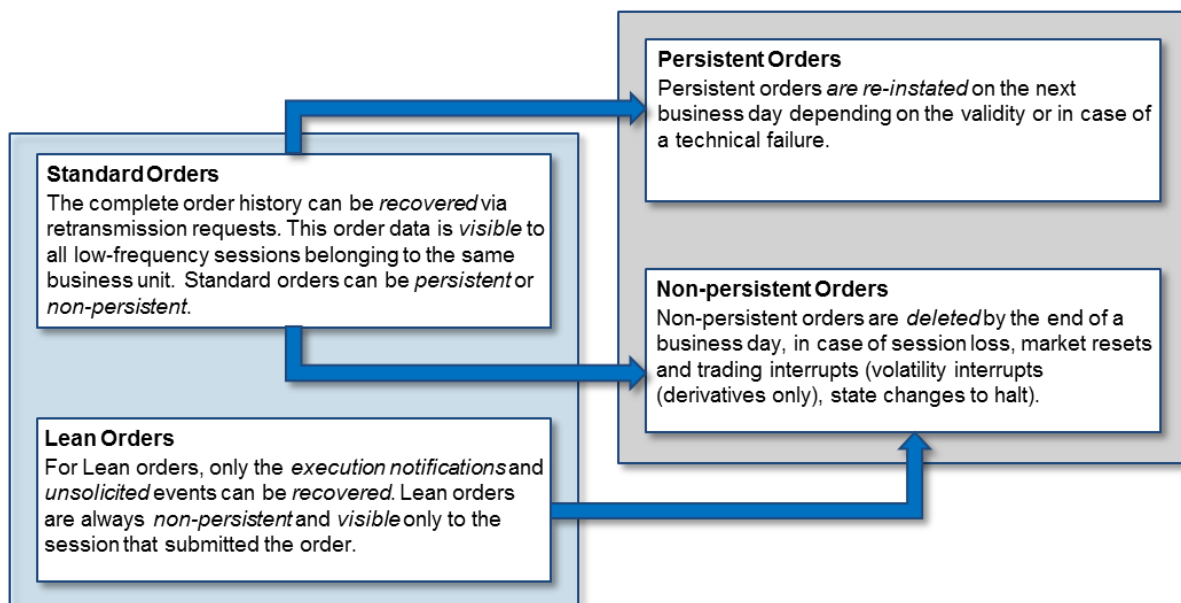


Figure 7: Standard/ Lean Orders vs. Persistent/ Non-persistent Orders

In Börse Frankfurt, only persistent orders are allowed.

Overall, T7 supports the following order types, price conditions, restrictions and validities:

| Order Price Condition | Description   |
|-----------------------|---|
| Limit Order           | A limit order is an order that does not get executed at a price worse than its limit. |
| Market Order          | A market order is an order without price.   |

Table 9: Order Price Conditions

| Order Type                              | Description  |
|---|--|
| Stop Order                              | In case the market reaches the stop price, the stop order is triggered and routed to the order book. The stop order is available as a stop market and / or a stop limit order.   |
| One-Cancels-the-Other Order (OCO)       | The OCO combines the behaviour of a limit order with that of a stop market order. On entry, it first behaves exactly like a Limit Order. Once the trigger condition is fulfilled, the OCO order behaves like a triggered Stop Market Order.  |
| Iceberg Order (cash markets only)       | Iceberg Orders are orders with quantities only partially visible, i.e. only visible with its peak in the order book. The refill of the peak after execution can be configured to be random.  |
| Trailing Stop Order (cash markets only) | Trailing Stop Orders (TSO) behave like Stop Orders but having an absolute or relative distance between the stop limit and the current reference price (trailing amount). TSOs can be entered only as "Market". The stop limit of a TSO adjusts automatically according to the trailing amount until the trigger condition is fulfilled and the TSO is triggered. |

Table 10: Order Types

| Order Restriction                         | Description  |
|---|--|
| Auction Only                              | If this restriction is set, the order can only get executed during a scheduled auction phase but not during continuous trading or an (extended) volatility interruption.                                       |
| Intraday Auction Only (cash markets only) | If this restriction is set, the order can only get executed during a scheduled intraday auction phase (this excludes volatility interruptions).  |
| Opening Auction                           | If this restriction is set, the order can only get executed during the opening auction.  |
| Closing Auction                           | If this restriction is set, the order can only get executed during the closing auction.  |
| Special Auction                           | If this restriction is set, the order can only get executed during a Special Auction   |
| Book-Or-Cancel                            | Orders using the restriction Book-or-Cancel (BOC) are accepted and written only to the order book if its execution is not possible (fully/ partially) on entry. For derivatives, BOC is valid for quotes, too. |

Table 11: Order Restrictions

| Order Validity      | Description  |
|---------------------|--|
| Good-for-Day        | Orders entered "Good-for-Day" (GFD) are deleted at the end of the trading day they were entered on.  |
| Good-till-Date      | Orders entered "Good-till-Date" are valid until the date specified by the user. The order is then deleted automatically during the end of day processing of its last validity day. |
| Good-till-Cancelled | Orders entered "Good-till-Cancelled" (GTC) remain in the system until the deletion by the user itself.   |



| Order Validity                   | Description   |
|----------------------------------|---|
| Immediate-or-Cancel              | For orders entered as "Immediate-or-Cancel" (IOC), the quantity that cannot be executed immediately upon entry, is deleted.                           |
| Fill-or-Kill (cash markets only) | For "Fill-or-Kill" (FOK) orders either the total quantity is matched upon order entry or nothing is executed at all and the whole order is cancelled. |

Table 12: Order Validity

### Multi Order Fill-or-Kill

The Multi Order Fill-or-Kill functionality is a special order entry request to enter more than one limit order simultaneously with the condition that all orders are either completely executed or rejected simultaneously.

### Trade-at-Close

An order needs to be explicitly flagged to participate in the Trade-at-Close phase (trading model *Continuous Trading with Auctions*, cash markets). Only market orders and limit orders with a limit price better or equal to the closing auction price can participate in Trade-at-Close.

### Order Identification

An order can be tracked via the Order ID assigned to every order on entry. The Order ID is unique per product and does not change over the whole lifecycle of the order. This means that T7 may assign the same Order ID to orders belonging to different products. Please note in that context that the same security set up in different markets is assigned to separate products.

In addition to the Order ID, in the cash markets every order is assigned a System Order ID Version Number (starting with 0) which increases in case of a user-driven order modification which results in a priority change, e.g. in case of

- changing the limit price,
- increasing the quantity,
- extending the validity.

For more information on order tracing, please refer to the document T7 Cross System Traceability.

### Order deletions

Orders can be either persistent or non-persistent. Depending on the scenario, order deletions are triggered automatically. The following table provides an overview:

N = Delete non-persistent orders.

P = Delete persistent orders.

| Event  | Derivatives | Cash Markets | Pending Delete possible (Y/N) |
|--|-------------|--------------|-------------------------------|
| Volatility Interruption                            | N           | -            | N                             |
| Instrument Suspension                              | N           | N, P         | N                             |
| Instrument Stop                                    | N           | N            | N                             |
| Product temporarily not tradeable (Slow Partition) | N           | N            | N                             |

| Event   | Derivatives | Cash Markets | Pending Delete possible (Y/N) |
|---|-------------|--------------|-------------------------------|
| Product State Halt                                      | N           | N            | N                             |
| Mass Delete by Market Operation                         | N, P        | N, P         | Y                             |
| Clearing Member Stop                                    | -           | N, P         | Y                             |
| Session Disconnect<br>(Loss, Logout or Duplicate Login) | N           | N            | Y                             |
| Mass Cancellation by Trader                             | N, P        | N, P         | Y                             |
| Emergency Mass Delete by Trader                         | N, P        | N, P         | Y                             |
| Trader/ Business Unit Stop                              | N, P        | N, P         | Y                             |

Table 13: Order deletion scenarios

Please note, that the order deletion scenarios include quotes which are always non-persistent.

## 3.2 Quotes

T7 supports both, one-sided and double-sided quotes. The following applies for quotes:

- Quotes belong to the session on which they are entered, refer to section 8.1.1. A business unit can have multiple sessions, each with its own quotes.
- The “mass quote” function allows the users to enter, overwrite and delete multiple quotes of a session simultaneously.
- T7 provides “quote entry” to replace an existing quote with the new quote. This is done by starting a new quote life cycle with an accumulated traded quantity set to zero. It also provides “quote modification”, which refers to an existing quote and preserves the accumulated traded quantity. The priority timestamp of a quote stored in the order book is changed when the price is changed, or when the open quote quantity is increased.
- The “delete all quotes” function can be used to delete all quotes in a product of a session, or of all sessions of a Business Unit.
- It is possible to deactivate and to delete all quotes of a session per product at the same time. In this case, all further mass quote requests for this session and product will be rejected until the session will be activated again for quoting for this product.
- Quotes for complex instruments are supported and can be mixed with quotes for simple instruments inside a single “mass quote” transaction.
- An incoming or a modified quote side which fails the price reasonability check or the extended price range validation results in:
  - Rejection of the incoming or modified quote
  - Deletion of the old quote (i.e. with both sides) in the book belonging to that session and instrument.
- Quotes are always non-persistent and automatically deleted in specific situations. Please refer to the table “Order deletion scenarios” in section 3.1 including quotes as well. In difference to these scenarios, quotes are also deleted in case of an intraday expiry (derivatives markets only) while orders remain in the order book.

- All quotes of a session can be deactivated and reactivated. This feature can be applied for a specific product. When quotes of a session are deactivated, they are unavailable for matching, but can be updated while remaining inactive. During the time of the deactivation, any new quote entered into the session will also be deactivated. When quotes are (re-)activated they receive a new matching time priority.  
The market maker protection functionality which is provided for the derivatives markets only uses this deactivation function.
- Incoming quotes which could potentially immediately match, are rejected, if the trader configures the quote as BOC quote, or if the Passive Liquidity Protection (PLP) is switched ON for this product.
- A Request for Quote (RfQ) is a request that is directed either to the entire market or to specific market makers, which indicates trading interest in a specific instrument. An RfQ can be single-sided or double-sided, and it can optionally carry a quantity. The exchange determines by product whether RfQs are supported.
- In the trading model *Continuous Auction for Market Maker*, there is also a non-binding Indicative quote.
- In the *Continuous Auction for Specialist* trading model, the Quote Request Solution (QRS) offers market participants the opportunity to request a full execution of an order at a defined or better price.

### 3.3 Trading Models & Matching

T7 has the capability to support different trading models or trading forms. A predominating trading model is the *Continuous Trading (with Auctions)* model. Besides that, T7 supports the trading model *Continuous Auction with Market Maker*, or the trading model *Continuous Auction with Specialist*, or the trading model *One Auction* which are set up for some products in the cash markets only.

However, in principle trading is arranged in a way that the best priced orders in the book are traded first when an order is entered into the order book. If there are multiple orders at the best price, the allocation scheme specifies how the quantity of the incoming order is allocated to those book orders. T7 supports the following allocation schemes: Time allocation, Pro-rata allocation, Time-pro-rata allocation.

#### 3.3.1 Allocation schemes

- **Time allocation:** The quantity of the incoming order is allocated to the oldest book order first. If there is any remainder then it is moved to the next oldest order, until the quantity of the incoming order is exhausted or all orders at the best price have been executed.
- **Pro-rata allocation:** The allocated quantity of the incoming order is shared amongst all book orders at the best price. The allocation is proportional to the size of each book order. All book orders at the best price are considered in the allocation.
- **Time-pro-rata allocation:** The allocation of an individual order is based on its order size as well as on the order priority time, combining aspects of pro-rata and time allocation. In that way, best price orders with an older order priority time receive a higher share of the quantity of

the incoming order, at the expense of orders with younger order priority times, and there are potentially less book orders involved, compared to the pro-rata allocation.

The allocation schemes applied to the derivatives markets can be different per product and instrument type. For the cash markets, the “Time allocation” scheme is used.

### 3.3.2 Synthetic matching

Synthetic Matching is a functionality that is specific to derivatives markets. Also known as Implied Matching, it denotes the matching of orders from different instruments against each other. Besides the normal Direct Matching of incoming orders against orders on the other side of the same instrument’s order book, T7 supports synthetic matching of futures spread orders or inter-product spread orders against orders belonging to their leg instruments, as well as synthetic matching between orders from different futures spreads. See the Functional Reference for extensive descriptions of the various types of synthetic matching in T7.

## 3.4 Eurex Improve

Eurex Improve is a client order flow execution facilitation service, also known as *Client Liquidity Improvement Process (CLIP)*. It enables a *client* and a facilitating *bank/broker* to agree upon the execution of the client’s order flow of a fixed quantity and price against an order of the bank/broker, yet giving other market participants, especially liquidity providers, the opportunity to get involved in the execution of the client’s order flow by pre-announcing the agreement to all market participants and by executing the client’s and the bank/broker’s orders in the central order book open to all market participants.

The Eurex Improve process has three phases:

- In the *initiation phase*, bank/broker and client enter their CLIP trading indications, or the bank/broker enters one two-sided CLIP trading indication, with the agreed price and quantity into T7. They are not yet converted to book orders.
- In the *Price Improvement Period*, other market participants – especially liquidity providers – have the opportunity to enter orders and / or quotes on the bank/broker side of the book to get involved in the deal.
- In the *Execution phase*, the CLIP trading indications of bank/broker and client are converted into book orders, and the client order is matched against the orders on the bank/broker side of the book.

In order to increase the chances for bank/brokers that their order match with client orders, a bank/broker can define a *Maximum Tolerable Price* in addition to the agreed price.

## 3.5 Eurex automated Cross- and Pre-Arranged Trade facility

Eurex offers an automated Cross- and Pre-Arranged Trade facility service for on-exchange trading. This enables Trading Participants to provide all required information at the appropriate time while ensuring the time management and compliance of announcements as required by the Eurex Rules and Regulations, similar to Eurex Improve. The two-sided Cross Request allows the entry of both to-be-crossed orders at once, or, in case of a pre-arranged trade, allows the entry of a one-sided order,

which is linked to the corresponding counterparty side. The Eurex automated Cross- and Pre-Arranged Trade facility allows participants to configure which order should be entered first into the orderbook and whether the second order is sent as Immediate-or-Cancel.

### **3.6 Xetra Retail Execution service**

The Xetra Retail Execution service is a best execution offering for retail orders. It focusses on the needs of private investors and retail brokers. The service enables dedicated Retail Liquidity Providers (RLP) to enter quotes and orders (in short: RLP quotes) better than the price within the current order book for retail orders provided by dedicated Retail Member Organizations (RMO). The Xetra Retail Execution service is offered in the *Continuous Trading with Auctions* trading model.

### **3.7 Trade Traceability**

T7 provides trade traceability, allowing orders to be linked to executions, trade confirmations, and trades in clearing and settlement. Please refer to the T7 Cross System Traceability document for detailed information.

### **3.8 Clearing and Settlement**

Trade information of products marked for clearing via a central counterparty is forwarded for clearing and settlement to different Central Clearing Counterparties (CCPs) depending on product settings and / or participant's choice. The following is applied:

- C7 is the clearing system used for all Eurex and EEX products,
- Eurex Clearing acts as the default counterparty for all cash products which are CCP eligible.
- Participants have the possibility to individually choose an additional CCP per cash market among the CCPs approved by the exchange, besides the mandatory default CCP. Trades are forwarded to the additional CCP if certain conditions are met.

Trade information of products marked for non-CCP clearing are forwarded for settlement to Clearstream. For non-CCP cash instruments, the functionalities of bilateral aggregation and settlement internalisation are available.

Please refer to the T7 Cross System Traceability document for further information.

## 4 TES (Off-book) Functionality

T7 Entry Service offers functionality of entering pre-arranged trades into the exchange system. The price and quantity of an off-book trade is already agreed upon by the participants before entry of the trade into the exchange system. This section describes key aspects of the TES functionality provided by the T7 trading architecture.

### 4.1 TES Types and TES Type Eligibility

For derivatives, the T7 Entry Service supports the following TES types:

- Block Trade - Supports the bi- and multilateral off-book trading of standard Eurex products.
- Exchange for Physicals (EFP) Fin – Supports bilateral off-book trading on futures products and a cash reference to specific bonds.
- Exchange for Physicals (EFP) Index – Supports bilateral off-book trading on futures products and a cash reference to an equity basket. Also Flexibles are allowed.
- Exchange for Swaps (EFS) – Supports bilateral off-book trading on futures products and a cash reference to a swap contract.
- Vola Trade – Supports bilateral off-book trading on futures products and a reference to an options off-book (Block TES trade) trade. On-book options trades are not allowed to be used as a reference for a vola trade.
- Trade at Market – Specific TES type for Total Return Futures products (TRF) and Variance futures. TRF contracts are associated with an underlying index, security, or fixed income product and replicate the daily performance of a Total Return Swap corresponding to the contract expiration.
- DeltaTAM – Specific TES type for trading an Index Total Return Futures (TRF) contract in conjunction with the respective Price Index Futures contract on that same Index simultaneously.
- Eurex EnLight – A trade based on a previous Eurex EnLight Deal results in the TES Type Eurex EnLight.
- Qualified Third-Party Information Provider trade (QTPIP) – Entered by a registered third-party information provider (no Eurex exchange participant) and approved by any Eurex participant.

For cash instruments, the T7 Entry Service supports the following TES types:

- OTC – Over-the-Counter: Supports the bilateral, off-book *OTC* trading of cash instruments. Buyer and seller can enter the trades that they previously arranged with each other into the T7 system. Neither price nor quantity validations nor publication of the TES trade is performed.
- LIS – Large-in-Scale: Supports the bilateral, off-book but *on exchange* trading of cash instruments. Buyer and seller can enter the trades that they previously arranged with each other into the T7 system. On entry, several validations are conducted, e.g. price and quantity validations. After approval, the TES trade is published with a certain delay via EMDS. The deferred TES trade publication is performed according to MiFID/MiFIR requirements.
- Xetra EnLight – A trade based on a previous Xetra EnLight Deal results in an off-book *on exchange* trade of TES Type Xetra EnLight. The TES trade is published with a certain delay via EMDS. The deferred TES trade publication is performed according to MiFID/MiFIR requirements.

The TES type eligibility defines on business unit and user level if TES trading in one or more of the above-mentioned TES types is allowed. The supervisors of each business unit are able to assign the eligibility of certain TES types to the users belonging to their business unit. If users are eligible for the TES type “Block Trade”, they are automatically eligible for the TES type “Trade at Market”. This means that there is no independent TES type eligibility for “Trade at Market”.

## 4.2 TES Profiles

TES profiles support a configurable mapping between products and their instrument types on the one hand and TES types on the other hand. The TES profile will summarize all valid *product – instrument type – TES type – Minimum Expiry Range* combinations termed as TES profile key and corresponding TES profile attributes. The key is a combination of the product, instrument type and TES type.

For derivatives, the TES profile attributes consist of:

- Broker Allowed – This flag defines whether broker trades are supported or not.
- Max Participants - This field provides information about how many participants / TES approving users can be involved on both sides of a TES trade.
- Minimum Price Step – This field provides the information about the minimum price increment allowed for a TES trade.
- Minimum Lot Size – This field provides the information about the minimum TES side quantity allowed in a single leg.
- Minimum Lot Size Non Primary – Replaces Minimum Lot Size for non-flexibles without Primary flag set, if the Minimum Lot Size Non Primary is filled.
- Allow Auto Approval – This field decides whether TES Auto Approval is allowed or not.
- Non-disclosure Limit – This field provides the quantity threshold for using the non-disclosure feature.
- Leg Prices Allowed – This field provides the information whether it is allowed to provide prices for the leg instrument or not and if allowed whether the leg prices must always be provided.
- Price Validation Rule – The rule used for price validation of TES trades in accordance to “Conditions for Utilization of the T7 Entry Services”.

The TES profile attributes for cash markets are a subset of the TES profile attributes for derivatives markets, plus the Auto Approval attribute:

- Broker Allowed.
- Max Participants. – Always 2 for bilateral.
- Price Validation Rule.

The TES profile is published on the Web sites mentioned in section 1.2 (Further reading).

*Example of a TES profile for derivatives (the actual configuration in production might be different):*

| Product | Instrument Type       | TES Type | Min Expiry Range | Broker Allowed | Max Participants | Minimum Price Step | Minimum Lot Size | Minimum Lot Size Non Primary | Allow Auto Approval | Non-disclosure Limit | Leg Prices Allowed | Price Validation Rule      |
|---------|-----------------------|----------|------------------|----------------|------------------|--------------------|------------------|------------------------------|---------------------|----------------------|--------------------|----------------------------|
| FDAX    | Simple                | Block    | 1                | FALSE          | 2                | 0.5                | 250              | 250                          | Y                   | 999999               | Not Allowed        | FUTURE SIMPLE INSTRUMENT   |
| FDAX    | Flexible              | Block    | 1                | FALSE          | 2                | 0.5                | 250              | 250                          | N                   | 1                    | Not Allowed        | FUTURE SIMPLE INSTRUMENT   |
| FDAX    | Simple                | Vola     | 1                | FALSE          | 2                | 0.5                | 1                | 1                            | Y                   | 999999               | Not Allowed        | FUTURE SIMPLE INSTRUMENT   |
| FDAX    | Simple                | EFP Idx  | 1                | FALSE          | 2                | 0.5                | 1                | 1                            | N                   | 999999               | Not Allowed        | FUTURE SIMPLE INSTRUMENT   |
| FDAX    | Calendar Spread       | Block    | 1                | FALSE          | 2                | 0.5                | 250              | 250                          | Y                   | 999999               | Allowed            | FUTURES SPREAD             |
| OGBL    | Simple                | Block    | 1                | TRUE           | 30               | 0.005              | 100              | 100                          | N                   | 999999               | Not Allowed        | OPTION SIMPLE INSTRUMENT   |
| OGBL    | Flexible              | Block    | 1                | FALSE          | 2                | 0.005              | 100              | 100                          | Y                   | 1                    | Not Allowed        | OPTION SIMPLE INSTRUMENT   |
| OGBL    | Standard Strategy     | Block    | 1                | FALSE          | 2                | 0.005              | 100              | 100                          | N                   | 999999               | Allowed            | STANDARD OPTION STRATEGY   |
| OGBL    | Volatility Strategy   | Block    | 1                | FALSE          | 2                | 0.005              | 100              | 100                          | Y                   | 999999               | Allowed            | OPTION VOLATILITY STRATEGY |
| OGBL    | Non-standard Strategy | Block    | 2                | FALSE          | 2                | 0.005              | 100              | 100                          | N                   | 999999               | Allowed            | NON-STD OPTION STRATEGY    |

### 4.3 TES activities

The following TES activities are supported by the T7 Trader GUI and by various T7 requests via the ETI interface:

- **TES Trade Entry:**  
Enables the entry of a pending TES trade containing the general TES trade information which encompasses the instrument Id, the trade price, the traded quantity, the TES closure time or the text field "TES trade description". It also specifies all users involved on the buy and sell side of the TES trade (approving users).
- **TES Trade Modify:**  
Allows the modification of a pending TES trade by its initiating user. As long as the TES trade is not approved by all of its approving users, the modification of the general TES trade information except instrument Id and external references is supported. This also includes the approving users and the number of the approving users involved on the TES trade sides.
- **TES Trade Delete:**  
Allows the deletion of a pending TES trade by its initiating user.
- **TES Trade Approve:**  
Allows the approval of a pending TES trade side by its approving user. All TES trade side specific information (e.g. trading capacity, open/ close indicator, text fields) needs to be specified. A TES trade also needs to be approved by the initiating user if the initiating user is identical to an approving user, i.e. if the user who was initiating the TES trade is also involved on any side of the same TES trade. – The auto approval functionality allows the participants to define criteria as TES Auto Approval Rules, which are used by the system to approve TES trades automatically. The TES Auto Approval Rules also provide the possibility to set pre-defined clearing and MiFID fields.



#### **4.4 Clearing and Settlement**

The clearing and settlement of TES trades works analogously to the clearing and settlement of on-book trades, see chapter 3.8.

## 5 Eurex EnLight

### 5.1 Overview

T7 provides Eurex EnLight, a selective request for quote service (SRQS), to negotiate off-book transactions electronically. The primary objective of the selective request for quote service is to find a counter party willing to execute a trade in the specific instrument with the negotiated price and quantity. The negotiated deal on Eurex EnLight is a non-binding agreement between two participants. It is not yet registered at the exchange as a binding trade. The Eurex EnLight deal is converted into a binding TES trade after a certain period of time.

Variants of the Eurex EnLight negotiation process are:

- Working Delta, where you can adjust price and quantity of an options trade after the deal is struck.
- Basis Trading, supporting outright futures trading by reducing the underlying delta risk of respondents.
- Eurex EnLight SMART Request for Quote, where a requester can target potential respondents who most likely have an interest in a specific RfQ.
- Eurex EnLight Anonymous Requests and Responses, where it is possible to negotiate deals and make trades without disclosing the identity of the requester and/or of respondents.

### 5.2 The Workflow in Eurex EnLight

The Eurex EnLight process workflow follows the Straight-Through-Processing negotiation model (STP), and it is divided in two parts: *Negotiation Event workflow* and *Deal workflow*.

#### 5.2.1 Negotiation Event Workflow

The Negotiation Event workflow has the following steps:

1. The requester (typically a broker) sends a RfQ request to start a Negotiation Event. A termination time (T1) for the RfQ is set.
2. The targeted respondents (market makers) are informed about the start of the Negotiation Event with the details about the RfQ.
3. The respondents provide quotes and the requester receives information about each quote. The quote has to contain all the relevant information for a TES Trade including MiFID and clearing fields.
4. Based on the quotes received, the requester can decide to target a specific quote by sending an order (HitQuote) that results into a deal. The order has to contain all the relevant information for a Eurex EnLight Trade including MiFID and clearing fields

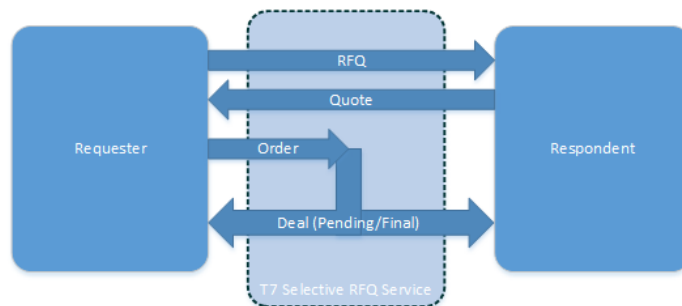


Figure 8 Eurex EnLight Negotiation Event Workflow

### 5.2.2 Deal Workflow

The Deal workflow in Eurex EnLight starts with the creation of a deal.



Figure 9 Eurex EnLight Deal Workflow

1. A deal is generated when an order is allocated to a quote side. The deal is communicated both to the requester and the respondent.
2. A deal generated within an *Indicative* Negotiation Event has the status *Pending*. The respondent can change the status from *Pending* to *Final* or to *Rejected*. The requester can change the status from *Pending* to *Rejected*.
3. A *Pending* deal can have a limited validity time. In case the validity time is reached, the deal is *Rejected* automatically.
4. For options, the requestor may allow the phase *Working* between *Pending* and *Final*. Here, the respondent is allowed to modify the options quantity of the pending deal according to certain rules and restrictions.
5. Once the status of the deal is changed to *Rejected* or *Final*, it cannot be updated anymore. A *Final* deal can be cancelled on mutual agreement.
6. All *Final* Eurex EnLight deals are stored / queued for further processing with a certain delay (T2). The time is communicated to the customers.
7. Upon expiry of T2, the Eurex EnLight *Final* deals are automatically converted to TES trades with TES type Eurex EnLight.

## 6 Xetra EnLight

### 6.1 Overview

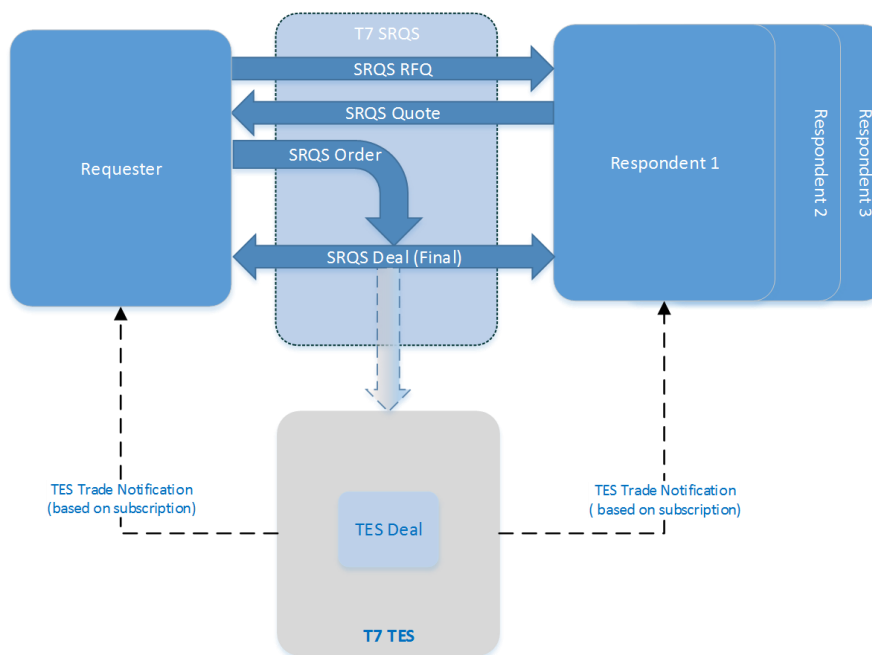
T7 provides Xetra EnLight, a selective request for quote service (SRQS), to negotiate off-book transactions electronically. Xetra EnLight is an off-book on-exchange service that is MiFID II compliant.

Contrary to Eurex EnLight, a struck deal automatically results in a legally binding T7 TES trade without any further interactions by the counterparties. This T7 TES trade is of TES type *Xetra EnLight*.

### 6.2 Process Workflow in Xetra EnLight

The process workflow of the negotiation in Xetra EnLight has the following steps:

1. The requester uses a RfQ to start a Negotiation Event with selected respondents.
2. The respondents will be informed with all details of the RfQ.
3. In response to the RfQ, the respondents can provide quotes to the requester. Alternatively, the respondents may also answer with *working* or *declined* or even may not respond at all.
4. The requester may update the Negotiation Event. Respondents are informed about updates.
5. Respondents may update their quotes. The requester will be informed about updates.
6. Based on the quotes received, the requester can target a specific quote or opt for an allocation by which the best quote is selected automatically by Xetra EnLight.
7. When the requester sends an order to hit a quote, a deal is generated which automatically results in a TES trade of type Xetra EnLight.



Xetra EnLight Negotiation Event Workflow

## 7 Risk Protection and Safeguards

Risk protection and safeguard functions in T7 include:

- Transaction Size Limits (derivatives markets only) restrict the quantity at order and quote entry, and at entry of a TES trade. Individual transaction size limits are supported for on-book trading and off-book trading. They are configurable on exchange, clearing member, participant, TSL user group level, and user level, either per TSL product groups or per product and TSL type, depending on the level.
- Maximum Order Quantity (cash markets only) enables the participant to restrict the quantity at order and quote entry on user level. In addition, there are maximum order quantity limits set by the exchange which cannot be skipped by the participants.
- Maximum Order Value determining the maximum value of an order that a trader is allowed to enter. In addition, there are maximum order value limits set by the exchange which cannot be skipped by the participants.
- Market Maker Protection (MMP) mechanism which can prevent that too many quotes of a market maker match during a short period of time (derivatives markets only).
- Pre-Trade limits:
  - For derivatives markets:
    - For futures and options which set limits to the sum
      - of the netted (buy / sell) traded on-book quantity of the current day,
      - of open order and quote quantities of the current day on this side (buy / sell);and separately, for TES off-book trading, to the sum of:
      - of the netted (buy / sell) traded off-book quantity of the current day,
      - of the sum of not yet approved TES trades of the current day on this side (buy / sell).
  - For cash markets:
    - Based on the notional value of on-book orders, i.e. quantity \* price.
- Clearing members may inactivate one of their DC market participants for a specific product, separately for on-book and off-book trading (derivatives markets only). In this case, all orders, quotes and / or pending TES trades of the DC market participant are deleted.
- Clearing member may stop a trading participant, for whom they are a designated clearing member. When a trading participant is stopped, the corresponding trading business unit in T7 is automatically stopped, and all orders and quotes within the business unit are deleted. Manual stop of trading can be applied to the whole participant, or to a business unit, or to an individual trader. Manual stop may also be performed by the exchange. (Cash markets only)
- Advanced Risk Protection functionality: It can provide warnings, slow or stop a participant if a predefined position limit is exceeded (derivatives markets only).
- Price validations for orders and quotes safeguarding that the limits entered are not done by accident or that the orders and quotes are executed at a price far away from the market without a notification to the traders or the market. An extended price validation cannot be skipped by the participants.
- Volatility Interruptions which interrupt trading by a volatility auction state to provide the customers to adjust their orders due to the current market condition. Volatility interrupts are supported at instrument level for cash instruments, and at instrument and / or product level for derivatives products / instruments.

- Self-Match Prevention (SMP) functionality which prevents that own orders of the same instrument match against each other. Also a marketwide Self-Match Prevention among various participants is possible.
- Passive Liquidity Protection (PLP): Can be switched ON by the exchange for specific products. Then, incoming quotes are considered as BOC quotes, and incoming potentially aggressively matching orders can be deferred by a very small amount of time.

## 8 Interfaces

The T7 trading architecture provides participants a portfolio of interfaces: Gateways act as entry points for transactions, public market and reference data are distributed using multicast, additionally a GUI solution is offered.

One general design principle of the interfaces is to minimize the exchanges' effect on the participants. Except for the T7 GUI Launcher, participants do not need to install exchange hardware or software components, so that T7 can be accessed without the need for specific hardware, operating system, programming language, and compiler versions, as long as they support the general communication components, like TCP/IP and IP multicast.

The next figure followed by a brief overview describe all interfaces supported by T7. Please note that the availability of interfaces may differ on different trading venues.

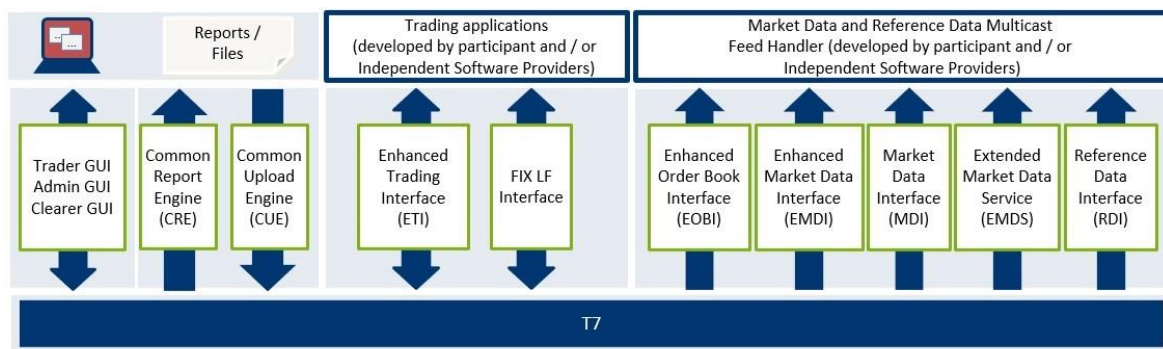


Figure 10: T7 Interface Landscape

### Trading Interfaces:

- **Enhanced Trading Interface (ETI):** ETI is the high-performance trading interface designed for Participants who require the highest throughput and the lowest latency. The ETI supports full trading functionality, including market making (quoting), T7 Entry Service and Eurex EnLight, Xetra EnLight.
- **FIX LF Interface:** The T7 FIX LF Interface uses FIX 4.4 protocol.

### Market Data:

- **Enhanced Order Book Interface (EOBI):** Provides the entire visible order book by distributing public and anonymous information on each individual order and quote in un-netted manner, along with all on-book executions and state information (i.e. *on-book information only*, no off-book data). For the derivatives markets, the EOBI include selected products only while for the cash markets, no selection of products takes place, but all instruments are considered.
- **Enhanced Market Data Interface (EMDI):** Provides un-netted price level aggregated market data for *on-book* and *TES trading* using multicast technology.
- **Market Data Interface (MDI):** Provides netted price level aggregated market data using multicast technology.
- **Extended Market Data Service (EMDS):** This interface provides intraday settlement prices, adjusted open interest, trade prices and underlying ticker data for the derivatives markets. For the cash markets, the EMDS include all trade prices as well as underlying data like indices (T7 ticker),

and cash TES trades of type LIS.

### **Reference Data:**

- **Reference Data Interface (RDI):** This interface provides reference data via high bandwidth connections, including intra-day updates which is for relevant for derivative products only. Intraday updates (created/ deleted complex instruments) are also disseminated via MDI and the incremental channel of EMDI.
- **Reference Data File (RDF):** Reference data is also delivered as a start-of-day file (RDF) including updated intraday files for incrementals (for derivatives).
- **Reference Data via webpage:** Reference data is provided via the internet on [www.eurex.com](http://www.eurex.com) and [www.xetra.com](http://www.xetra.com).

### **Graphical User Interfaces (GUIs)**

- **GUIs (Trader/ Admin/ Clearer):** Graphical user interfaces for basic trading functions (Trader GUI) such as order maintenance, TES and Eurex EnLight, Xetra EnLight. Quoting is not supported. The Admin GUI is provided for administration functions, such as for user maintenance, for example. The Clearer GUI is designed for the derivatives and cash markets, to manage the back-office departments and the clearing risk functions (e.g. clearing member stop button functionality).

### **Reports**

- **Common Report Engine:** Trading reports, audit trail reports, and the reference data file are provided exclusively via the common report engine.



The following table illustrates, as a summary, which functions are supported by each interface:

|                      | Core Trading <sup>1</sup> | Market Making <sup>2</sup>   | Info <sup>3</sup>             | T7 Entry Services <sup>8</sup> | Eurex / Xetra EnLight | Market Data  | Reference Data                                 | Admin <sup>5</sup> | Reports | Clearing Member Stop/Release |
|----------------------|---------------------------|--|-------------------------------|--------------------------------|-----------------------|--|--|--------------------|---------|------------------------------|
| ETI                  | ✓                         | ✓  | ✓                             | ✓                              | ✓                     |  |  |                    |         |                              |
| FIX LF               | ✓                         |  | Private risk control messages |                                |                       |  |  |                    |         |                              |
| MDI                  |                           |  |                               |                                |                       | ✓ <sup>4</sup>   | New & deleted complex and flexible instruments |                    |         |                              |
| EMDI                 |                           |  |                               |                                |                       | ✓ <sup>4</sup>   | New & deleted complex and flexible instruments |                    |         |                              |
| EOBI                 |                           |  |                               |                                |                       | ✓ <sup>7</sup>   | New & deleted complex instruments              |                    |         |                              |
| EMDS                 |                           |  |                               | ✓<br>But not type OTC          | ✓                     | Intraday settlement prices, open interest, underlying ticker data, trade prices, indices |  |                    |         |                              |
| Trader GUI           | ✓                         | Only quote deletion, activation/deactivation, protection maintenance | ✓                             | ✓                              | ✓                     | ✓  | ✓  |                    |         |                              |
| Admin GUI            |                           | Protection Maintenance   |                               |                                |                       |  |  | ✓                  |         |                              |
| Clearer GUI          |                           |  | Private Trade Info            |                                |                       |  |  | ✓                  |         | ✓                            |
| RDI                  |                           |  |                               |                                |                       |  | ✓  |                    |         |                              |
| Common Report Engine |                           |  |                               |                                |                       |  | ✓  |                    | ✓       |                              |

Table 14: Overview of Interfaces and Functions

<sup>1</sup> Order management, trade confirmations, complex instrument creation, cross request, quote request.

<sup>2</sup> Quote management, market maker protection.

<sup>3</sup> Public news, private risk control messages.

<sup>4</sup> Public market data, on-book and off-book trade information (derivatives only); product and instrument states, quote and cross requests.

<sup>5</sup> User maintenance, password maintenance, PIN procedure, trade enrichment rule, stop trading, risk control actions.

<sup>7</sup> Does not provide off-book trade information.

<sup>8</sup> TES trade management, TES trade approval.

## 8.1 Trading Interfaces

There are two types of trading interfaces: The Enhanced Trading Interface (ETI) and the FIX LF Interface. Both interfaces are session-oriented, and participants must order their sessions from the exchange via the respective member portal. Participant applications are connected to the trading system by opening a TCP session to an application gateway.

### 8.1.1 The Enhanced Trading Interface

The Enhanced Trading Interface (ETI) is the high-performance trading interface designed for Participants who require the highest throughput and lowest latency.

A Participant must establish a TCP session to connect to T7. All application messages exchanged between the client and the ETI are close to the FIX V5.0 SP2 semantics, including all officially approved extension packs. A proprietary session layer is used to provide the highest flexibility.

ETI provides all trading functions of T7:

- Order handling for simple and complex instruments.
- Additional support of short order message layouts for simple instruments, which applies streamlined functionality to achieve a comparable latency to quotes.
- Quote handling, including quote inactivation, for simple and complex instruments.
- Execution notifications.
- Market maker protection mechanisms (derivatives only).
- Creation of complex instruments ((strategies), derivatives only).
- Request for quote.
- Cross request.
- TES entry, modification, deletion and approval.
- Eurex EnLight.
- Xetra EnLight.
- Eurex Improve.
- Knock-out and Sold-out of instruments.

ETI enables Participants to subscribe to private trading data in broadcast form:

- Drop copy of order events other than for lean orders (optional subscription).
- Trade confirmation at a business unit level (optional subscription).

The following trading support information is available for each session:

- News messages from the exchange (optional subscription).
- Private risk control messages (always sent).

For Specialists trading in the *Continuous Auction with Specialist* trading model, ETI provides specific information:

- Order book data (with Trailing Stop order updates).
- Instrument state changes.
- Specialist end of restatement message during Start-Of-Day.
- Start and End-of-Assignment in case the specialist for an instrument is changed intraday.

ETI does not provide any market data, reference data, or administrative functions.

ETI is a session-oriented interface. ETI responds to each request on the same session after the request was submitted and also sends unsolicited messages when there are changes or executions to any orders and quotes entered on that session.

ETI is based on the following general concepts:

- Trade confirmations are the only legally binding information that a trade has occurred.
- Orders are owned by the user.
- Lean orders can only be modified through the same session, where they had been entered previously.
- Quotes are owned by the session.
- Order and quote responses as well as execution messages do not completely echo the data of the original order. Hence Participant applications should save the details of each order and quote sent.
- No state recovery (inquiry) is supported; Participant applications must keep track of the order book and use retransmission recovery and the order book replay, which is sent at start-of-day and in case of an exchange system failure (i.e. market reset).
- No messages from previous days are offered via ETI.
- For quotes and lean orders, only the execution notifications and unsolicited events are recoverable.
- For standard (non-lean) orders all order events are recoverable.
- A listener broadcast contains order events for standard orders but not for lean orders (refer to 3.1).
- Eurex EnLight quotes and Xetra EnLight quotes are non-recoverable.

ETI supports two session types: high-frequency (HF) and low-frequency (LF) sessions. Both session types differ in functionality:

- A HF session supports lean orders (non-persistent) as well as standard orders (persistent and non-persistent), but a HF session does not support the subscription of broadcasts.
- A LF session restricts the possible frequency of Eurex resp. Xetra EnLight quotes.
- A LF session may also be used for the receipt of broadcasts; for example, listener broadcast or trade notifications at a business unit level/ clearing member level. Orders in a LF session can be persistent or non-persistent, standard (non-lean) or lean, refer to 3.1. TES and Eurex or Xetra EnLight requests are only supported via LF sessions.

In order to protect its trading system, T7 has several measures in place to ensure that its most vital components are not harmed by a malfunctioning client application. In particular, the following technical transaction limits (throttle) are used for the respective combinations of environment, session type and capacity type:

| Environment       | Session type | Capacity type | Transactions/sec |
|-------------------|--------------|---------------|------------------|
| <b>Production</b> | HF           | Ultra         | 250              |
|                   | HF           | Full          | 150              |
|                   | HF           | Light         | 50               |
|                   | LF           | Full          | 150              |
|                   | LF           | Light         | 50               |
| <b>Simulation</b> | HF           | Ultra         | 20               |
|                   | HF           | Full          | 20               |
|                   | HF           | Light         | 20               |
|                   | LF           | Full          | 20               |
|                   | LF           | Light         | 20               |

Table 15: Transaction Limits in Production and Simulation

Additionally, all ETI sessions have an assigned disconnection limit of:

- 450, i.e. in case of more than 450 consecutive rejects due to exceeding the technical transaction limit for sessions with a throttle value of 150 txn/sec.
- 150, i.e. in case of more than 150 consecutive rejects due to exceeding the technical transaction limit for sessions with a throttle value of 50 txn/sec.

For both limits all technical transactions are counted using a sliding window.

For more information see the *Deutsche Börse's T7 - Insights into trading system dynamics* presentation, which can be found at these places:

eurex.com > Support > Technology > T7 (below at Supporting documents)

xetra.com > Technology > T7 trading architecture > Publications

Dedicated back-office ETI LF sessions are available to receive trade and listener broadcasts. This session type cannot be used to enter order/ quotes.

Please refer to the *T7 Enhanced Trading Interface (ETI) Manual* for further details.

### 8.1.2 The T7 FIX LF Interface

The FIX LF Interface is intended for establishing a standard FIX connection to the exchange.

The T7 FIX LF Interface uses FIX 4.4 protocol. Self-Match Prevention (SMP) is available. There is no TES entry and no TES maintenance, but only TES notification about TES trades entered via other interfaces. Eurex Improve is available.

Please refer to the *T7 FIX LF Manual* for further details.

## 8.2 The Market Data Interfaces

Public market data is available using multicast interfaces. All data feeds are distributed over a number of IP multicast addresses which is available via RDI/ RDF.

### 8.2.1 Market Data Interface (MDI) and Enhanced Market Data Interface (EMDI)

The Enhanced Market Data Interface (EMDI) offers un-netted market data and TES trade data (i.e. *on-book* and *off-book* data) and requires a high bandwidth connection. Market Data Interface (MDI) offers netted market data, with fewer order book and trade updates, requiring a lower bandwidth connection.

The EMDI and MDI feeds follow FIX 5.0 SP2 semantics and are FAST encoded. EMDI uses out-of-band recovery, while MDI uses in-band recovery.

The following information is provided:

- Netted (MDI) and Un-Netted (EMDI) price level aggregated market data. Less price levels are provided on the MDI feed, which can be different to the number provided on the current trading system.
- Product state and instrument state information.
- On-book (derivatives and cash) and TES (derivatives only) trade information (EMDI: individual trade information, MDI: trade statistics only such as high, low, last etc.). Eurex EnLight TES trades, but not Xetra EnLight TES trades.
- Quote requests and cross requests.
- Description of complex instruments created intra-day.
- The Market Data Interface consists of incremental messages (event driven) and snapshots (periodically generated; not sent contiguously for all instruments of a product) which is delivered via one channel (in-band).

Please refer to the *T7 Market and Reference Data Interfaces Manual*, which contains further details on the interface.

Please note that EMDI is not available for T7 Börse Frankfurt.

### 8.2.2 Enhanced Order Book Interface

Enhanced Order Book Interface (EOBI) provides the entire visible order book by publishing information on each individual order and quote, along with executions and state information. It is the most granular source of on-book market data. At the same time, EOBI provides also information on TES trades in the same way as EMDI.

The EOBI requires a 10GB connection and is available in co-location installations only.

For the derivatives markets, the EOBI includes selected products only, compared to the cash markets, where no selection of products takes place, but all instruments are considered.

The EOBI feed is distributed in the form of fixed length binary messages, without any compression, and uses out-of-band recovery. Most of the functional concepts used are similar to those of EMDI, however the EOBI provides greater transparency, together with a high throughput at minimal latency.

The following information is provided on the EOBI, depending on order book disclosure settings:

- Order book information, disseminated without any depth limitation.
- The side, price, priority timestamp and displayed quantity of each visible order and quote.

- Trade prices and traded quantity for each executed on-book trade, with information about the possibly remaining aggressive quantity in the book.
- TES trade information in the same way as EMDI (derivatives only), with Eurex EnLight TES trades, but not Xetra EnLight TES trades.
- An indicator to the Herfindahl Hirschman Index for the orderbook, and for each trade.
- Product state and Instrument state information.
- Quote requests and cross requests.
- Intra-day changes with regard to complex instruments.

The required reference data information is available via the Reference Data Interface (RDI) feed and the Reference Data Files (RDF). Please refer to the *T7 Enhanced Order Book Interface Manual*, which contains further details.

### **8.2.3 Extended Market Data Service**

Participants and CEF ultra+ clients can receive via multicast the following:

- Intraday settlement prices (derivatives only).
- Open interest information (derivatives only).
- Underlying ticker data (derivatives only).
- Trades prices.
- Indices (cash only).
- TES trades (cash and derivatives), possibly deferred according to MiFID/ MiFIR requirements. This includes Eurex *and* Xetra EnLight TES trades. Excluded are cash trades of TES type OTC.

## 8.3 Reference Data

The following public reference data is provided to Participants:

- Product information.
- Instrument information (simple and complex instruments).
- Settlement prices and open interest from previous day (derivatives only).

Information is provided for published and active, but not for delisted products/ instruments.

Please refer to the *T7 Market and Reference Data Interfaces Manual*, which contains further details on the interface.

### 8.3.1 Reference Data Interface (RDI)

The Reference Data Interface (RDI) distributes data over a number of IP multicast addresses via high bandwidth connections. All feeds follow FIX 5.0 SP2 semantics and are sent with FAST encoding. Information is provided as regular snapshots containing information as of the beginning of the day and as incremental messages for intra-day updates<sup>3</sup>. For intra-day recovery purposes, the snapshots are repeated during the day. It uses the same technical means as the market data interfaces.

### 8.3.2 Reference Data File (RDF)

Reference Data Files (RDF) are provided at the beginning of the day for derivatives and cash markets with the full set of products and instruments. Additional Reference Data Files with updates are provided at fixed intervals during the exchange trading day, containing intra-day created/ deleted complex instruments (derivatives markets only) or information about activated covers (cash markets only). The files are available on the common report engine.

For cash market Börse Frankfurt, separate RDF files are provided.

### 8.3.3 Cash-specific reference data files

Cash-specific reference data files are provided along with the Reference Data Files (RDF).

- An All Tradable Instruments file is provided for Xetra.
- An All Tradable Instruments file is provided for Börse Frankfurt and Börse Frankfurt Zertifikate separately.

### 8.3.4 Reference Data in the market data interfaces

All information about intra-day created complex instruments is also provided in the EMDI, MDI and EOBI (derivatives markets only).

---

<sup>3</sup> Derivatives markets: Created / deleted complex instruments; including flexible instruments.

Cash markets: Activated instrument covers.

## 8.4 Graphical User Interfaces

The Graphical User Interfaces (GUIs) provide exchange Participants with trading, market data and administrative and clearing related functions. The GUIs are started by the *T7 GUI Launcher* which is a customized seamless solution offered by Deutsche Börse to start a GUI and automatically receive updates. Additionally, Deutsche Börse offers a Java SE 8 Runtime Environment without additional Java license charges to be used exclusively with the T7 GUI applications. The new T7 GUI Launcher and the Java SE 8 Runtime Environment are provided to the participants via the member section.

The GUIs can be accessed by standard leased lines or via the internet. For authentication, user/password methods, and client certificate (only for internet access) technologies are used.

The Trader GUI provides access to the following functions for products and instruments traded on T7:

- Market overview and depth for simple and complex instruments.
- Display of theoretical prices (derivatives only).
- Maintenance of standard (non-lean) orders.
- View of standard (non-lean) orders of the business unit.
- Execution information for on-book trading of the business unit.
- Display of underlying ticker.
- Creation of complex instruments (derivatives only).
- Request for quote.
- Cross requests.
- The setting of market maker protection parameters (derivatives only).
- Quote deletion and activation/ deactivation.
- Emergency risk control functions (panic cancel and stop/ release button).
- Private risk control messages.
- General messages from the exchange.
- T7 Entry Services.
- Eurex EnLight Services.
- Xetra EnLight Services.

Entry or query of Quotes or lean orders is not supported.

The Admin GUI contains the following functions:

- Administrative functions, such as creation of users, assignment of entitlements and transaction size limits.
- Trade enrichment rules setting.
- Emergency risk control functions (panic cancel and stop/release button).

The Clearer GUI contains following functions for cash markets:

- Administrative functions for clearing.
- Display of trades of related trading participants.
- Clearing Member stop functionality with deletion of orders/ quotes of halted participant.



and for derivatives markets:

- Trades from DC market participants.

and for derivatives and cash markets:

- Pre-Trade Risk limits maintenance.

For more information on the GUIs please refer to the *T7 Cash respectively T7 Derivatives Markets Trading + Admin GUI & Clearer GUI - User Manual*.

## 8.5 Reports

Trading reports, audit trail reports, and reference data files are provided via the Common Report Engine (CRE), where they can be retrieved by Participants. Please note that the reports do not match in the layout for derivatives and cash products.

For details, please refer to the *T7 XML Report Reference Manual*, and to the *Common Report and Upload Engine User Guide*.

## 9 Change log

| Version           | Date          | Changes   |
|-------------------|---------------|---|
| 12.1<br>Version 1 | 05 March 2024 | <ul style="list-style-type: none"> <li>• 2.2 New instrument type Non-Standard Options Volatility Strategy.</li> <li>• 2.4.2 Entitlement: Removal of TES Compression Service role.</li> <li>• 4.1 TES type EFPI: Also Flexibles are allowed.</li> <li>• 4.1 TES type Compression: Removed.</li> <li>• 7 Risk Protection and Safeguards: Marketwide Self-Match Prevention.</li> </ul> |