



## CAPITALISATION OF BSE MAIN MARKET

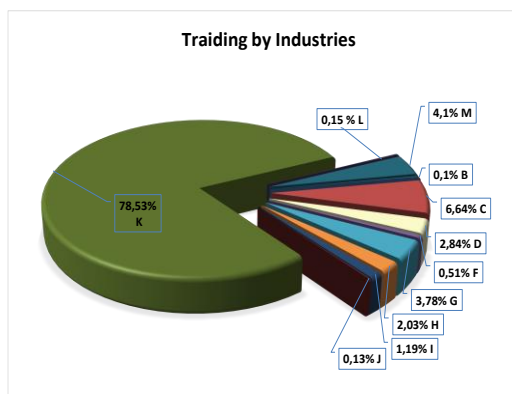
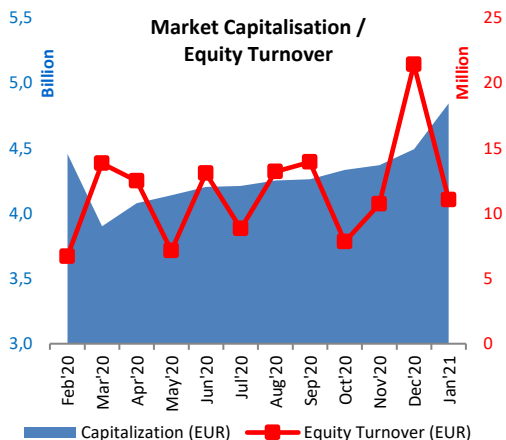
As at 31 Jan 2021			
Market Segment	Capitalization (EUR)	Change	Change
		Dec 20 %	Jan 20 %
Premium Equities Segment	717 154 085	5,51%	-20,70%
Standard Equities Segment	3 712 565 055	8,83%	14,15%
Special Purpose Vehicles Segment	411 815 212	2,82%	0,29%
<b>Total Capitalisation</b>	<b>4 841 534 351</b>	<b>7,79%</b>	<b>6,01%</b>

BSE INDICES *	
<b>SOFIX</b>	
Value *	499,38
Monthly change	11,59%
Annual change	-13,28%
P/E **	4,72
P/B **	0,86

<b>BGREIT</b>	
Value *	143,08
Monthly change	3,91%
Annual change	6,99%
P/E **	43,29
P/B **	1,29

<b>BGTR30</b>	
Value *	540,87
Monthly change	8,35%
Annual change	3,45%
P/E **	25,90
P/B **	1,32

<b>BGBX40</b>	
Value *	111,55
Monthly change	10,03%
Annual change	-1,46%
P/E **	7,71
P/B **	1,60



## MONTHLY TRADING BY BSE MAIN MARKET SEGMENTS

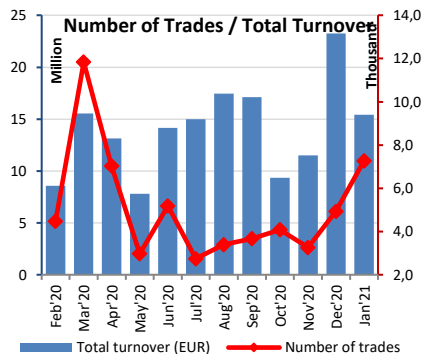
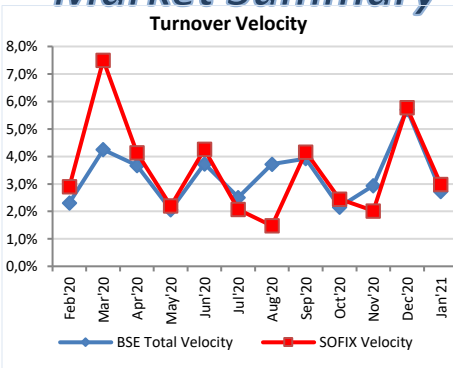
Market Segment	January 2021		Change	Change
	Trades	Turnover (EUR)	Dec 20	Jan 20
			Turnover %	Turnover %
Premium Equities Segment	2 079	1 415 796	-62,82%	-10,84%
Standard Equities Segment	4 408	8 922 619	-37,80%	106,18%
Special Purpose Vehicles Segment	630	687 183	-78,74%	-78,23%
Bonds Segment	43	4 251 904	135,39%	109,08%
Compensatory Instruments Segment	52	72 774	15,51%	-89,46%
Exchange Traded Products Segment	64	64 491	628,66%	93,16%
Subscription Rights Segment	0	0	100,00%	100,00%
Government Securities Segment	0	0	N/A	N/A
<b>TOTAL:</b>	<b>7 276</b>	<b>15 414 768</b>	<b>-33,75%</b>	<b>30,20%</b>

TRADING BY INDUSTRIES ACCORDING TO		Turnover	Market Cap.	Turnover
NATIONAL CLASSIFICATION OF ECONOMIC ACTIVITIES		(EUR)	(EUR)	Velocity
B	Mining and quarrying	11 489	26 383 899	0,044%
C	Manufacturing	732 349	1 353 257 817	0,054%
D	Electricity, gas, steam and air conditioning supply	313 022	344 823 425	0,091%
F	Construction	56 164	46 276 006	0,121%
G	Wholesale and retail trade; repair of motor vehicles and motorcycles	416 250	140 495 412	0,296%
H	Transportation and storage	223 345	227 067 453	0,098%
I	Accommodation and food service activities	131 751	62 659 276	0,210%
J	Information and communication	13 955	43 035 218	0,032%
K	Financial and insurance activities	8 658 399	2 025 499 882	0,427%
L	Real estate activities	16 337	428 997 258	0,004%
M	Professional, scientific and technical activities	452 537	143 038 704	0,316%

\* Values as at 31 January 2021;  
 \*\* P (prices) are weighted-average.  
 Earnings and Book value are Financial reports data (ttm)



## Market Summary



## BSE INDICES

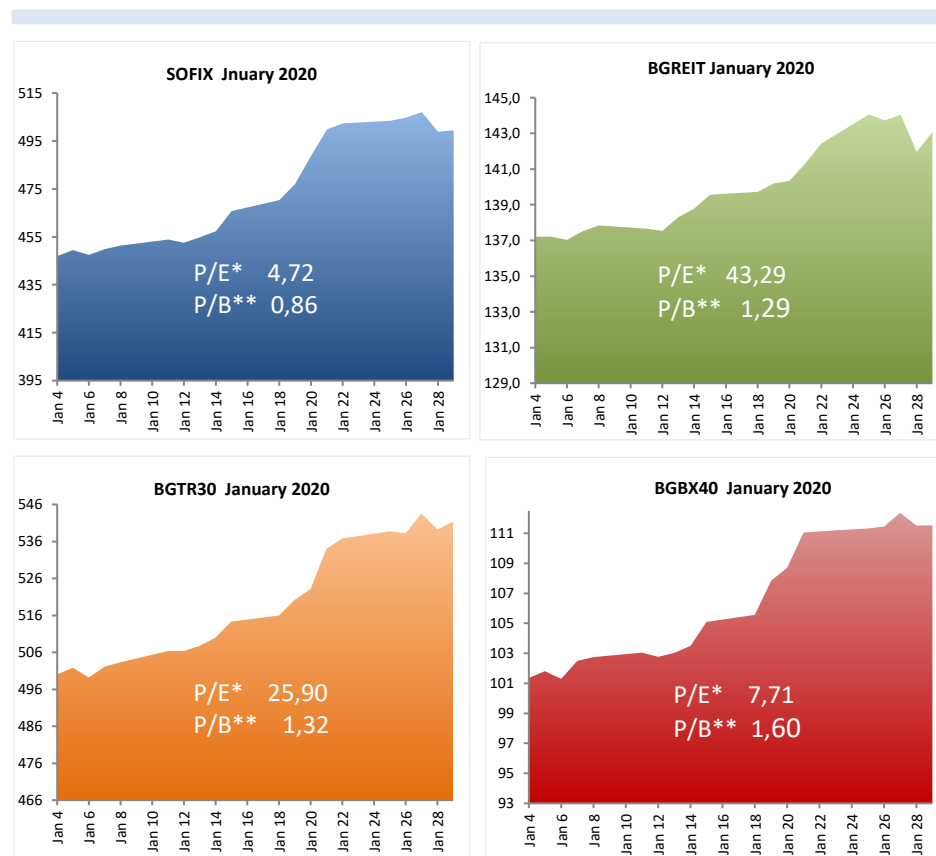
	Market Cap (EUR)	% of total Market Cap	Turnover (EUR)	% of total turnover	Trades	% of all trades
SOFIX	1 542 585 373	31,86%	3 446 154	31,26%	4 179	58,72%
BGREIT	272 874 939	5,64%	415 580	3,77%	525	7,38%
BGTR30	2 895 496 656	59,81%	4 580 552	41,54%	5 053	71,00%
BGBX40	3 574 486 067	73,83%	9 171 253	83,18%	6 640	93,30%

### Liquidity Ranking

BSE Code	Issuer	Trades	Volume (lots)	Turnover (EUR)
5DOV	Doverie United Holding PLC	977	293 609	621 091
A4L	Allterco	854	1 040 688	3 587 999
6C4	Chimimport	683	1 060 124	529 907
4CF	CB Central Cooperative Bank	505	488 883	252 594
5F4	CB First Investment Bank	367	210 696	197 691

### BSE- Members

Trades	Turnover (EUR '000)	
Karoll	5 921 Karoll	5 994
Elana Trading	2 946 Real Finance	4 462
First Financial Brokerage House	1 381 Elana Trading	3 713
BenchMark Finance	1 224 Sofia International Securities	3 268
UG Market	719 ABV Investments	3 081



\* P (prices) are weighted-average

\*\* Financial reports data (ttm)



# Market Summary

## PREMIUM MARKET



Trading on regulated market in January

Ticker	Company	Industry	Last Price (EUR)	Change	Issue Size (Shares)	Market Capitalisation (EUR)	Trades (#)	Volume (lots)	Value (EUR)
3JR	Sopharma	Pharmaceuticals	1,738	6,25%	134 797 899	234 331 643	172	124 062	205 995
4CF	CB Central Cooperative Bank	Banking	0,537	7,14%	127 129 970	68 250 548	505	488 883	252 594
4KX	Korado Bulgaria	Manufacturing	3,375	2,33%	13 168 614	44 437 836	21	15 998	53 664
5F4	CB First Investment Bank	Banking	0,931	-1,09%	149 084 800	138 731 043	367	210 696	197 691
5MB	Monbat	Batteries Manufacturer	2,352	15,00%	39 000 000	91 725 763	170	43 268	95 751
6C4	Chimimport	Holding Company	0,511	6,38%	239 646 267	122 529 191	683	1 060 124	529 907
SKK	Sirma Group Holding	Software Development	0,289	1,80%	59 360 518	17 148 061	161	282 218	80 194
<b>TOTAL:</b>						<b>717 154 085</b>	<b>2 079</b>	<b>2 225 249</b>	<b>1 415 796</b>

