



## CAPITALIZATION OF BSE MAIN MARKET

As at 30 Apr 2024			
Market Segment	Capitalization ( EUR )	Change	Change
		Mar 24 %	Apr 23 %
Premium Equities Segment	1 811 522 429	0,84%	53,86%
Standard Equities Segment	4 087 274 500	0,89%	5,79%
Special Purpose Vehicles Segment	645 830 548	-0,80%	5,79%
<b>Total Capitalization</b>	<b>6 544 627 477</b>	<b>0,71%</b>	<b>15,81%</b>

### BSE INDICES \*

#### SOFIX

Value *	813,54
Monthly change	0,75%
Annual change	34,02%
P/E **	10,90
P/B **	1,78

#### BGREIT

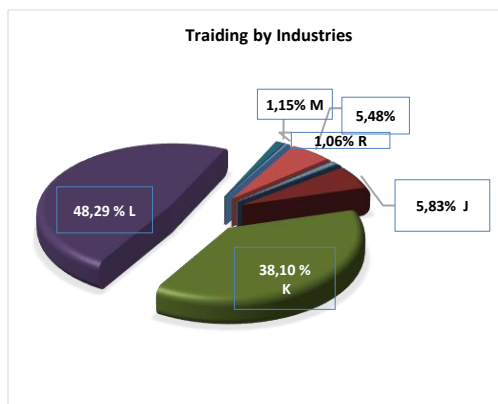
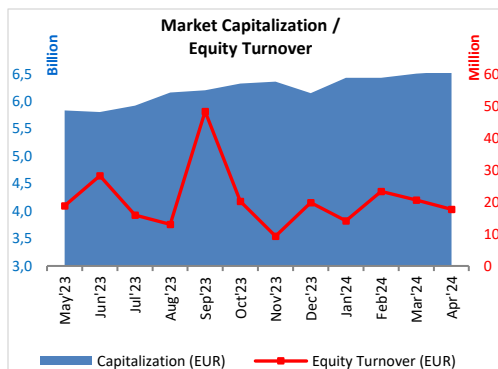
Value *	189,5
Monthly change	-1,05%
Annual change	-0,59%
P/E **	20,83
P/B **	2,45

#### BGTR30

Value *	817,64
Monthly change	-0,16%
Annual change	13,42%
P/E **	35,34
P/B **	2,88

#### BGBX40

Value *	165,38
Monthly change	0,30%
Annual change	18,37%
P/E **	14,95
P/B **	1,88



## MONTHLY TRADING BY BSE MAIN MARKET SEGMENTS

Market Segment	April 2024		Change	Change
	Trades	Turnover ( EUR )	Mar 24	Apr 23
			Turnover %	Turnover %
Premium Equities Segment	1 477	3 942 243	-19,46%	347,73%
Standard Equities Segment	1 536	11 736 566	-6,71%	71,99%
Special Purpose Vehicles Segment	392	1 975 458	-37,20%	462,95%
Bonds Segment	58	20 647 388	50,83%	16 264,90%
Compensatory Instruments Segment	47	167 258	72,41%	7,11%
Exchange Traded Products Segment	69	1 246 118	918,29%	260,56%
Subscription Rights Segment	139	3 298	-98,13%	N/A
Government Securities Segment	1	52 053	N/A	N/A
Initial Public Offering Segment	0	0	N/A	N/A
<b>TOTAL:</b>	<b>3 719</b>	<b>39 770 382</b>	<b>14,59%</b>	<b>358,00%</b>

## TRADING BY INDUSTRIES ACCORDING TO

NATIONAL CLASSIFICATION OF ECONOMIC ACTIVITIES		Turnover ( EUR )	Market Cap. ( EUR )	Turnover Velocity
B	Mining and quarrying	429	35 011 809	0,001%
C	Manufacturing	967 321	2 039 367 893	0,047%
D	Electricity, gas, steam and air conditioning supply	0	0	N/A
F	Construction	10 535	49 493 054	0,021%
G	Wholesale and retail trade; repair of motor vehicles and motorcycles	75 760	148 836 741	0,051%
H	Transportation and storage	23 386	423 384 473	0,006%
I	Accommodation and food service activities	45 316	58 989 995	0,077%
J	Information and communication	1 029 561	89 495 904	1,150%
K	Financial and insurance activities	6 725 459	2 888 598 771	0,233%
L	Real estate activities	8 525 647	539 662 147	1,580%
M	Professional, scientific and technical activities	203 212	166 502 857	0,122%
N	Administrative and support service activities	34	1 250 109	0,003%
R	Arts, entertainment and recreation	47 606	104 033 726	0,046%

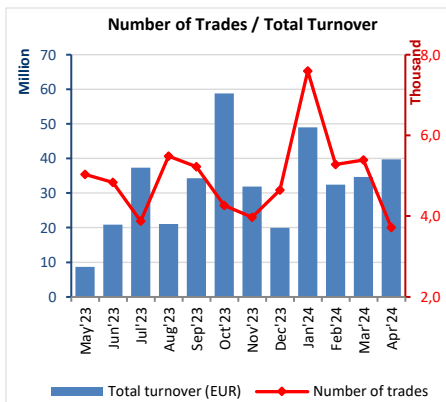
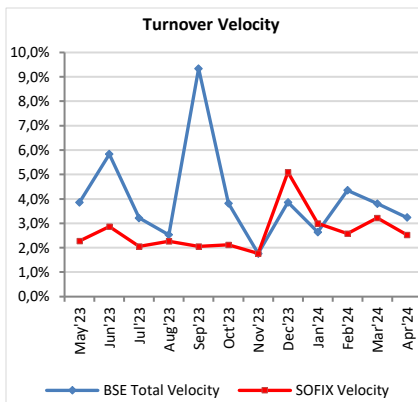
\* Values as at 30 April 2024;

\*\* P (prices) are weighted-average.

Earnings and Book value are Financial reports data (ttm)



# Market Summary

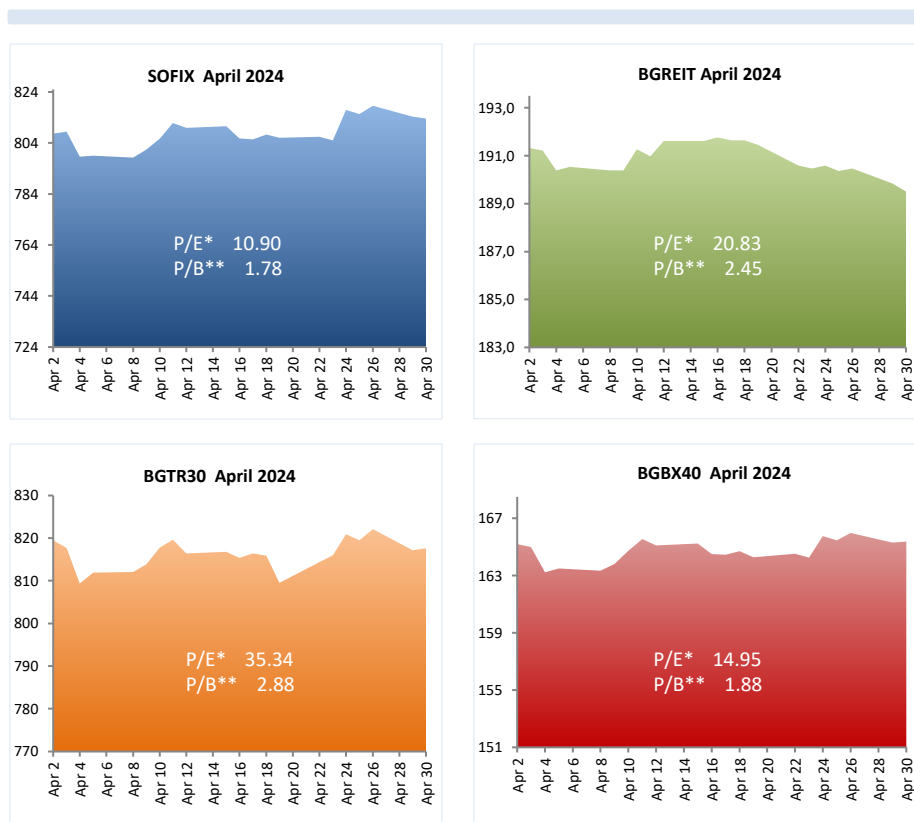


Liquidity Ranking					
BSE Code	Issuer	Trades	Volume (lots)	Turnover (EUR)	
FIB	CB First Investment Bank	462	736 144	1 002 803	TOP 5
SLYG	Shelly Group	398	50 483	1 733 292	
BNR	Bianor Holding	245	97 944	224 194	
ATER	Advance Terrafund REIT	186	88 355	152 387	
SFA	Sopharma	179	231 624	729 540	

BSE- Members		
Trades		Turnover (EUR '000)
Karoll	2 588 ABV Investments	27 462
Elana Trading	1 649 Central Cooperative Bank	12 862
BenchMark Finance	537 Real Finance	9 481
First Financial Brokerage House	499 Euro – Finance	6 824
ABV Investments	357 UG Market	4 352
UG Market	357	

## BSE INDICES

	Market Cap (EUR)	% of total Market Cap	Turnover (EUR)	% of total turnover	Trades	% of all trades
SOFIX	2 586 028 107	39,51%	5 462 189	30,94%	2 173	63,82%
BGREIT	391 825 542	5,99%	2 024 703	11,47%	337	9,90%
BGTR30	3 793 573 923	57,96%	15 160 826	85,88%	2 489	73,10%
BGBX40	4 032 175 686	61,61%	13 579 465	76,92%	3 115	91,48%



\* P (prices) are weighted-average

\*\* Financial reports data (ttm)



# Market Summary

## PREMIUM MARKET



Trading on regulated market in April										
Ticker	Company	Industry	Last Price (EUR)	Change	Issue Size (Shares)	Market Capitalisation (EUR)	Trades (#)	Volume (lots)	Value (EUR)	
AGH	Agria Group Holding	Financial and insurance activities	9,970	2,36%	6 800 000	67 797 303	77	5 685	55 693	
BSE	Bulgarian Stock Exchange	Professional, scientific and technical activities	7,721	-1,31%	6 582 860	50 823 019	142	22 774	175 184	
CCB	CB Central Cooperative Bank	Financial and insurance activities	0,767	-1,96%	127 129 970	97 500 782	51	78 684	60 251	
CHIM	Chimimport	Financial and insurance activities	0,350	-2,42%	239 646 267	83 932 496	57	246 938	86 992	
FIB	CB First Investment Bank	Financial and insurance activities	1,432	14,75%	149 084 800	213 432 374	462	736 144	1 002 803	
KBG	Korado Bulgaria	Financial and insurance activities	2,352	5,50%	13 168 614	30 971 825	24	8 370	18 896	
MONB	Monbat	Manufacturing	1,697	4,40%	39 000 000	66 202 073	20	5 653	9 971	
SFA	Sopharma	Manufacturing	3,078	-2,90%	179 100 063	551 265 897	179	231 624	729 540	
SGH	Sirma Group Holding	Manufacturing	0,371	-3,33%	59 360 518	22 004 149	67	185 782	69 621	
SLYG	Shelly Group	Professional, scientific and technical activities	34,768	0,59%	18 050 945	627 592 511	398	50 483	1 733 292	
<b>TOTAL:</b>						<b>1 811 522 429</b>	<b>1 477</b>	<b>1 572 137</b>	<b>3 942 243</b>	

