



CAPITALISATION OF BSE MAIN MARKET

As at 30 Apr 2021		Change	Change
Market Segment	Capitalization (EUR)	Mar 21 %	Apr 20 %
Premium Equities Segment	705 135 392	3,01%	4,68%
Standard Equities Segment	4 045 525 173	4,87%	34,57%
Special Purpose Vehicles Segment	437 104 155	3,83%	10,01%
Total Capitalisation	5 187 764 720	4,52%	27,24%

BSE INDICES *

SOFIX

Value *	522,39
Monthly change	4,00%
Annual change	16,75%
P/E **	23,84
P/B **	2,03

BGREIT

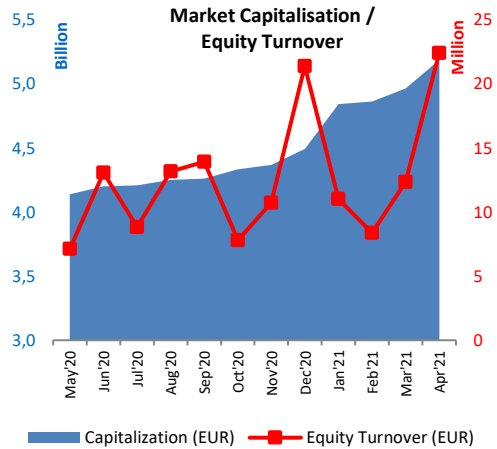
Value *	146,81
Monthly change	-0,42%
Annual change	10,43%
P/E **	55,38
P/B **	1,33

BGTR30

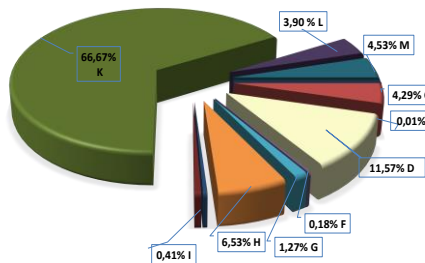
Value *	568,78
Monthly change	5,61%
Annual change	23,28%
P/E **	31,16
P/B **	2,86

BGBX40

Value *	118,79
Monthly change	4,98%
Annual change	25,37%
P/E **	22,41
P/B **	1,99



Trading by Industries



MONTHLY TRADING BY BSE MAIN MARKET SEGMENTS

Market Segment	April 2021		Change	Change
	Trades	Turnover (EUR)	Mar 21 Turnover %	Apr 20 Turnover %
Premium Equities Segment	1 317	1 508 611	73,25%	-47,74%
Standard Equities Segment	3 901	17 150 766	77,69%	212,63%
Special Purpose Vehicles Segment	667	3 734 922	104,46%	-8,99%
Bonds Segment	18	1 322 057	47,25%	256,39%
Compensatory Instruments Segment	56	122 237	-51,14%	232,65%
Exchange Traded Products Segment	38	27 846	-68,13%	-88,72%
Subscription Rights Segment	0	0	N/A	-100,00%
Government Securities Segment	1	516 186	9 217,04%	N/A
TOTAL:	5 998	24 382 624	79,41%	85,50%

TRADING BY INDUSTRIES ACCORDING TO

NATIONAL CLASSIFICATION OF ECONOMIC ACTIVITIES		Turnover (EUR)	Market Cap. (EUR)	Turnover Velocity
B	Mining and quarrying	1 830	23 758 014	0,008%
C	Manufacturing	961 409	1 459 948 768	0,066%
D	Electricity, gas, steam and air conditioning supply	2 592 005	410 425 431	0,632%
F	Construction	41 235	68 641 958	0,060%
G	Wholesale and retail trade; repair of motor vehicles and motorcycles	284 362	119 097 646	0,239%
H	Transportation and storage	1 463 766	257 904 273	0,568%
I	Accommodation and food service activities	92 466	73 085 332	0,127%
J	Information and communication	140 094	42 790 700	0,327%
K	Financial and insurance activities	14 935 605	2 125 445 139	0,703%
L	Real estate activities	873 936	445 372 617	0,196%
M	Professional, scientific and technical activities	1 014 523	161 294 842	0,629%

* Values as at 30 April 2021;

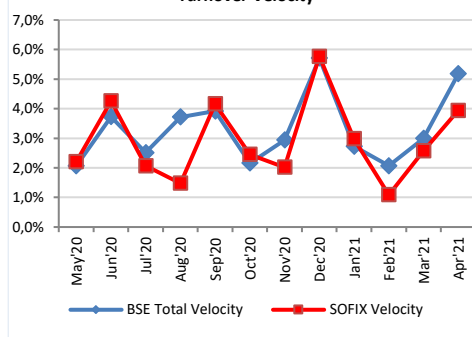
** P (prices) are weighted-average.

Earnings and Book value are Financial reports data (ttm)

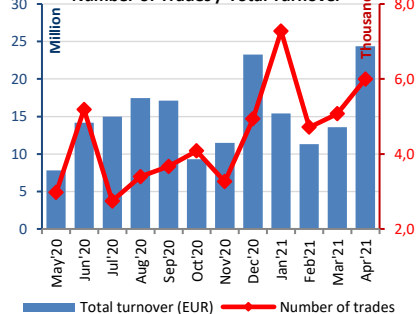


Market Summary

Turnover Velocity



Number of Trades / Total Turnover



BSE INDICES

	Market Cap (EUR)	% of total Market Cap	Turnover (EUR)	% of total turnover	Trades	% of all trades
SOFIX	1 629 905 855	31,42%	5 346 641	23,88%	3 208	54,51%
BGREIT	286 440 845	5,52%	2 026 827	9,05%	466	7,92%
BGTR30	3 188 592 907	61,46%	14 282 330	63,78%	4 388	74,56%
BGBX40	3 879 783 858	74,79%	14 370 041	64,17%	5 262	89,41%

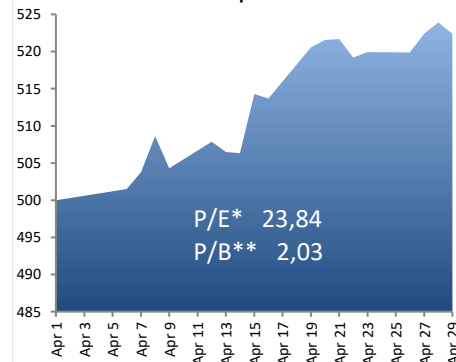
Liquidity Ranking

BSE Code	Issuer	Trades	Volume (lots)	Turnover (EUR)
A4L	Allterco	814	177 039	1 182 315
DUH	Doverie United Holding	424	187 725	479 380
CHIM	Chimimport	290	479 804	226 318
SFT	Sopharma Trading	285	96 240	274 491
FIB	CB First Investment Bank	277	262 869	219 060

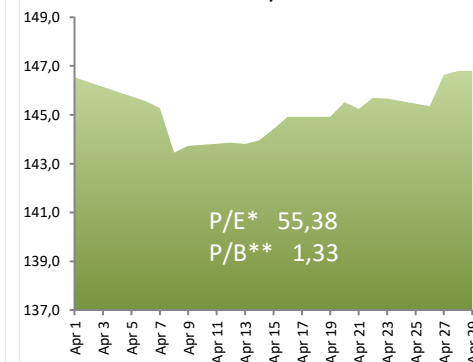
BSE- Members

Trades	Turnover (EUR '000)
Karoll	5 355 First Financial Brokerage House 7 568
Elana Trading	2 675 Karoll 6 318
BenchMark Finance	767 Elana Trading 5 700
First Financial Brokerage House	632 UniCredit Bulbank 5 018
UG Market	448 InterCapital Markets 3 660

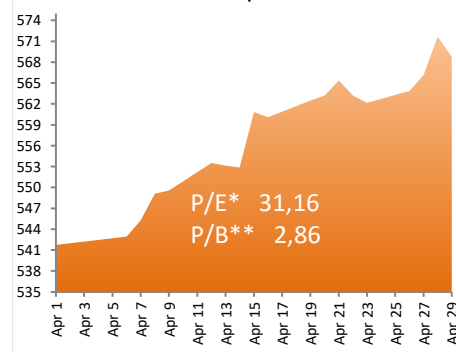
SOFIX April 2021



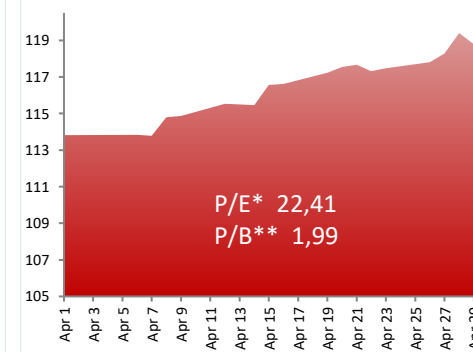
BGREIT April 2021



BGTR30 April 2021



BGBX40 April 2021



* P (prices) are weighted-average

** Financial reports data (ttm)



Market Summary

PREMIUM MARKET



Trading on regulated market in April

Ticker	Company	Industry	Last Price (EUR)	Change	Issue Size (Shares)	Market Capitalisation (EUR)	Trades (#)	Volume (lots)	Value (EUR)
CCB	CB Central Cooperative Bank	Pharmaceuticals	0,493	0,00%	127 129 970	62 725 503	93	158 292	78 786
CHIM	Chimimport	Banking	0,454	-1,33%	239 646 267	108 805 921	290	479 804	226 318
FIB	CB First Investment Bank	Manufacturing	0,828	-1,82%	149 084 800	123 485 874	277	262 869	219 060
KBG	Korado Bulgaria	Banking	3,630	5,19%	13 168 614	47 804 339	39	15 461	54 367
MONB	Monbat	Batteries Manufacturer	2,991	28,85%	39 000 000	116 651 243	263	73 213	202 562
SFA	Sopharma	Holding Company	1,697	-2,35%	134 797 899	228 817 957	138	93 792	160 125
SGH	Sirma Group Holding	Software Development	0,284	8,82%	59 360 518	16 844 556	217	2 158 193	567 393
TOTAL:						705 135 392	1 317	3 241 624	1 508 611

